

# REFLECTIONS

AN IN-DEPTH LOOK AT MISSISSIPPI'S ECONOMY

2019

---



**M | D | E | S**

MISSISSIPPI DEPARTMENT OF EMPLOYMENT SECURITY

*Helping Mississippians Get Jobs*

# CONTENTS

## 4 INTRODUCTION

## 7 POPULATION

State and county population with demographics by Metropolitan Statistical Areas (MSA) and Workforce Development Areas (WDA).

## 14 LABOR MARKET & UI BENEFITS

Five year totals of: civilian labor force annual averages by county; comparative labor force data with unemployment rates for the nation, state, MSA and WDA; regular unemployment benefits paid by state, county, MSA and WDA

## 28 INDUSTRY TRENDS

Industry distribution and covered employment for the state and WDAs based on place of work. Total covered employment with local area highlights by county including ranking and five year net and percent change.

## 36 PER CAPITA INCOME

Per capita income for state, county, MSA, and WDA including rankings with net and percent changes, plus a two-year comparison of the three highest and lowest ranking counties in the state compared to the nation.

## 41 SALES TAX COLLECTIONS

Total sales taxes collected by state, county, MSA, and WDA for the past five years with rankings and net and percent changes.

## 45 ECONOMIC STABILITY

Composite index of economic stability including five year covered employment growth, labor force employment in 2019, per capita income in 2018, five year total population and sales tax growth with rankings.

## 50 SUMMARY & CONCLUSIONS

## 53 GLOSSARY

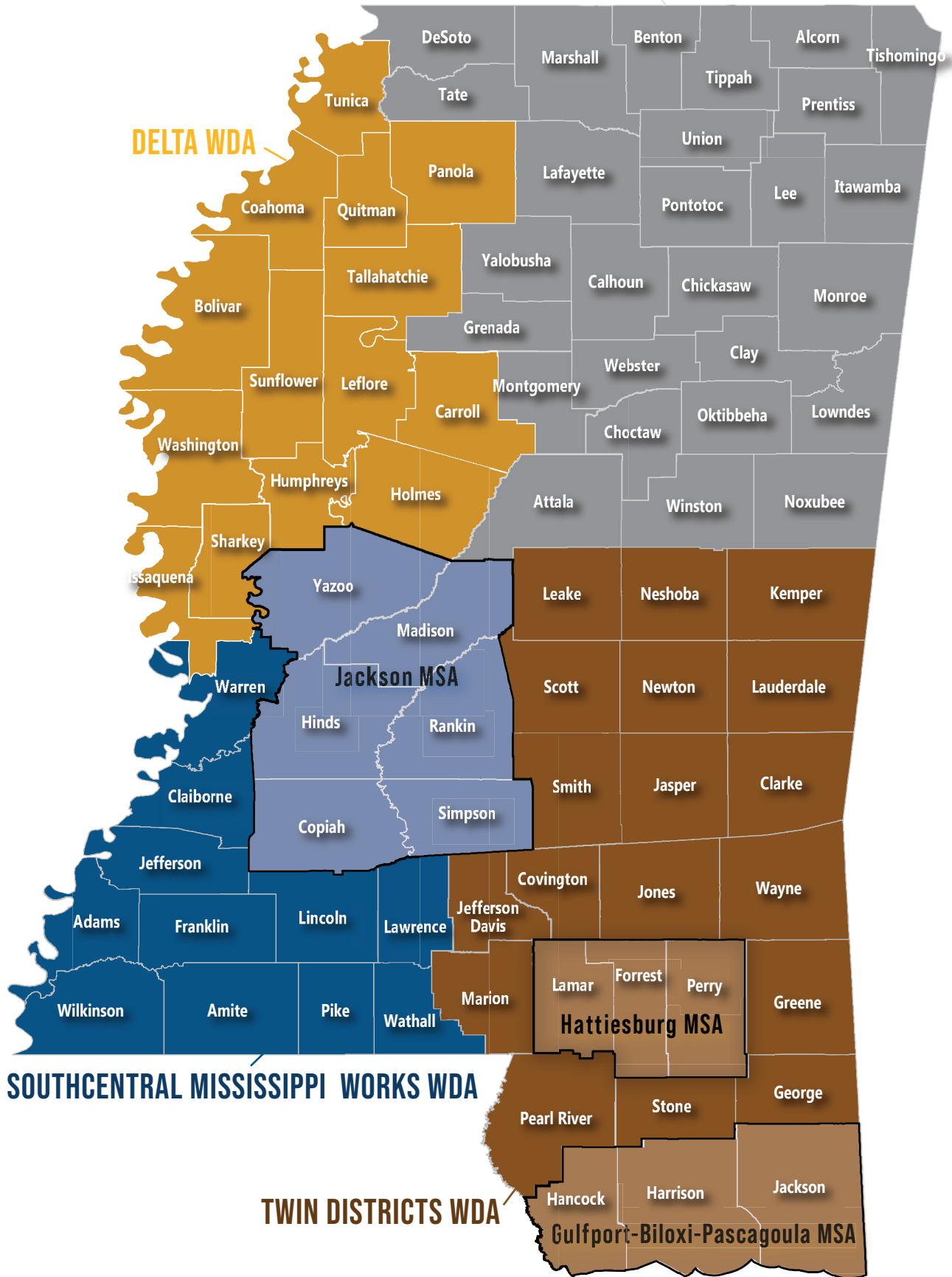


MISSISSIPPI DEPARTMENT OF EMPLOYMENT SECURITY

This workforce product was funded by a grant awarded by the U.S. Department of Labor's Employment and Training Administration. The product was created by the recipient and does not necessarily reflect the official position of the U.S. Department of Labor. The Department of Labor makes no guarantees, warranties, or assurances of any kind, express or implied, with respect to such information, including any information on linked sites and including, but not limited to, accuracy of the information or its completeness, timeliness, usefulness, adequacy, continued availability, or ownership. This product is copyrighted by the institution that created it. Internal use by an organization and/or personal use by an individual for non-commercial purposes is permissible. All other uses require the prior authorization of the copyright owner.

[MDES.MS.GOV](http://MDES.MS.GOV)

# MISSISSIPPI PARTNERSHIP WDA



## SOUTHCENTRAL MISSISSIPPI WORKS WDA

## TWIN DISTRICTS WDA

# INTRODUCTION

*By focusing on five common measures available at sub-state levels, it is hoped that some light can be shed on what is occurring...*

---

**T**his publication is designed as an aid to state and local Workforce Development Boards in understanding some of the changes in the economy of Mississippi. Numerous ways to measure economic activity exist, but in many cases, the data are not available below state and national levels. By focusing on five common measures available at sub-state levels, it is hoped that some light can be shed on what is occurring down to the lowest possible geographies.

Data is provided where possible at the following levels: Statewide, County, Metropolitan Statistical Area (MSA) and Workforce Development Area (WDA). The five areas of focus include population, labor force, employment by industry, per capita income and sales tax revenues. The general approach is to look at both long and short-term trends in order to gain a sense of where the state has been and where it might be headed. The Mississippi Department

of Employment Security (MDES) staff made every attempt to be as objective and thorough as possible within the limits of our resources.

Most of the data sets contained in this publication were generated internally by the Labor Market Information (LMI) Department of MDES, but there were exceptions. The population data came from official U.S. Census Bureau tables. The per capita income tables were extracted from data generated by the U.S. Bureau of Economic Analysis. The sales tax collection figures were derived from Mississippi Department of Revenue annual report.

A number of other data sets and publications that might be of further use to Workforce Development Board staff are produced periodically by the LMI Department. These may be accessed at our website – [mdes.ms.gov](http://mdes.ms.gov). Inquiries regarding the data and analysis found in this publication should be directed to [lmi-info@mdes.ms.gov](mailto:lmi-info@mdes.ms.gov).









# POPULATION

---

*The working public will relocate to areas that offer ample job opportunities...*

Changes in population are somewhat indicative of the economic health in an area. The working public will relocate to areas that offer ample job opportunities leaving places where employment is stagnant or in decline. More often, there is a direct correlation between population shifts and economic status. Over the last five years, Mississippi's population has declined 0.4% but has grown 0.3% since the 2010 Census.

According to Census Bureau estimates, nineteen counties had an increase in population with sixty-three counties posting declines between 2015 and 2019. Desoto County had the largest net increase, gaining 11,674 residents, over the five-year period. Harrison and Rankin Counties followed, increasing 7,406 and 5,824 respectively. Yazoo County had the largest percent increase for the period at 8.3%. Of the nineteen counties with increases in population, nine counties had jobless rates higher than the state average of 5.4%. Fifteen of the counties posting negative population changes had unemployment rates lower than or equal to the statewide average in 2019.

Of the sixty-three counties posting losses in population, fifty-two had less than 35,000 residents. The least populous counties were more likely to lose population than the larger ones; one exception over this five-year period being Hinds County with a population of 231,840; it lost over 12,000 residents—the largest net decline in the state—a 5.1% decrease. Although Coahoma County had the highest percentage decrease, 9.7% of its residents left the county over the last five-years, it still falls midway in the state, ranking forty-second in number of residents although with a net of 22,124 residents, the decline is great. Lauderdale County had the second highest decline in net population over the five-year period but with a current population of 74,125, ranking ninth in the state, the decline has a lesser impact than other counties with similar losses. Of the counties posting population gains, eight counties have total population numbers under 35,000; Benton County had the lowest overall population of those eight counties but managed a 1.3% increase over the five-year period.



REFLECTIONS

Jackson Metropolitan Statistical Area posted the best ranking in net population but came in last of the MSAs in net change and percent change over the five-year period. Both Gulfport-Biloxi-Pascagoula and Hattiesburg Metropolitan Statistical Areas showed population growth since 2015. Hattiesburg MSA ranked second in net change and percent change but last in net population while Gulfport-Biloxi-Pascagoula MSA ranked first in both net and percent change but second in net population.

Comparing the Workforce Development Areas shows the Twin Districts WDA ranks highest in population and second in both net change and percent change. Mississippi Partnership posted the highest rankings in net and percent change and second in total population. Southcentral Mississippi Works WDA ranked third in all categories, while Delta WDA ranked last in all three

categories. Delta WDA showed population decreases each year during the five-year period.



More job opportunities will attract workers to the area, particularly in the less populous counties; the general loss of manufacturing jobs across the state and nation hits these areas the hardest. Although recent years has seen an increase of manufacturing in the state, population numbers continue to decline.

According to the U.S. Census Bureau approximately 77% of the state's population is 18 years or older, the general

working age population and the state's demographic makeup has not changed significantly over the period from 2015 to 2019. A slightly higher percentage of female residents (51.5%) over males (48.5%) remained stable. The estimated percentages of Black or African American residents has risen two-tenths of a percentage point to 37.8% overall, the White population decreased four-tenths of a percentage point to 59.1%, while other races (American Indian, Alaska Native, Asian, Native Hawaiian and Other Pacific Islander, some other race) rose two-tenths of a percentage point making up 3.1% of the state's population. The percent of Hispanic residents in the state increased four-tenths of a percentage point to 3.4%. Mississippi is home to a much greater percentage of Black or African American residents when compared to the nation's rate of 13.4%.

**231,840**  
*Hinds County*  
**POPULATION**

**22,786**  
*Leake County*  
**POPULATION**

**1,327**  
*Issaquena County*  
**POPULATION**







## TOTAL POPULATION

	2015	2016	2017	2018	2019	2015 to 2019		RANK		
						NET CHG	PCT CHG	POP 2019	NET CHG	PCT CHG
MISSISSIPPI	2,988,471	2,987,938	2,988,510	2,981,020	2,976,149	(12,322)	(0.4%)	XXX	XXX	XXX
Adams	31,561	31,569	31,462	31,044	30,693	(868)	(2.8%)	26	72	55
Alcorn	37,276	37,246	37,165	36,810	36,953	(323)	(0.9%)	20	43	30
Amite	12,553	12,433	12,448	12,327	12,297	(256)	(2.0%)	63	35	48
Attala	18,665	18,551	18,467	18,328	18,174	(491)	(2.6%)	51	51	53
Benton	8,155	8,247	8,255	8,243	8,259	104	1.3%	75	15	13
Bolivar	33,230	32,549	31,718	31,115	30,628	(2,602)	(7.8%)	27	79	79
Calhoun	14,639	14,553	14,508	14,432	14,361	(278)	(1.9%)	58	37	46
Carroll	10,203	10,186	10,094	9,920	9,947	(256)	(2.5%)	68	36	51
Chickasaw	17,395	17,224	17,144	17,100	17,103	(292)	(1.7%)	53	38	42
Choctaw	8,372	8,299	8,240	8,265	8,210	(162)	(1.9%)	76	29	47
Claiborne	9,209	9,152	9,026	9,072	8,988	(221)	(2.4%)	73	33	50
Clarke	16,022	15,896	15,805	15,585	15,541	(481)	(3.0%)	57	50	58
Clay	20,005	19,854	19,621	19,404	19,316	(689)	(3.4%)	48	66	62
Coahoma	24,500	23,834	23,214	22,605	22,124	(2,376)	(9.7%)	42	78	82
Copiah	28,865	28,647	28,528	28,400	28,065	(800)	(2.8%)	34	70	56
Covington	19,243	19,174	19,014	18,825	18,636	(607)	(3.2%)	49	62	59
DeSoto	173,271	175,721	179,005	181,932	184,945	11,674	6.7%	3	1	2
Forrest	75,593	75,564	75,155	74,912	74,897	(696)	(0.9%)	8	67	31
Franklin	7,729	7,709	7,754	7,758	7,713	(16)	(0.2%)	78	23	22
George	23,378	23,645	23,951	24,110	24,500	1,122	4.8%	39	11	3
Greene	13,549	13,566	13,529	13,996	13,586	37	0.3%	61	18	17
Grenada	21,444	21,219	21,037	20,984	20,758	(686)	(3.2%)	45	65	60
Hancock	46,305	46,643	46,949	47,278	47,632	1,327	2.9%	16	8	9
Harrison	200,674	202,504	204,966	206,284	208,080	7,406	3.7%	2	2	8
Hinds	244,216	242,176	239,929	235,824	231,840	(12,376)	(5.1%)	1	82	69
Holmes	18,367	18,017	17,849	17,444	17,010	(1,357)	(7.4%)	54	74	78
Humphreys	8,705	8,588	8,333	8,256	8,064	(641)	(7.4%)	77	64	77
Issaquena	1,337	1,326	1,341	1,307	1,327	(10)	(0.7%)	82	22	26
Itawamba	23,543	23,416	23,499	23,461	23,390	(153)	(0.6%)	40	28	25
Jackson	141,354	141,535	142,246	143,127	143,617	2,263	1.6%	5	7	12
Jasper	16,554	16,588	16,574	16,425	16,383	(171)	(1.0%)	55	31	33
Jefferson	7,503	7,312	7,227	7,093	6,990	(513)	(6.8%)	79	55	76
Jefferson Davis	11,632	11,436	11,284	11,215	11,128	(504)	(4.3%)	66	53	65
Jones	68,629	68,473	68,364	68,196	68,098	(531)	(0.8%)	10	57	27
Kemper	10,111	10,035	10,093	9,733	9,742	(369)	(3.6%)	70	47	63
Lafayette	52,736	53,476	54,178	53,542	54,019	1,283	2.4%	14	10	10
Lamar	60,966	61,364	61,536	62,637	63,343	2,377	3.9%	11	5	5
Lauderdale	78,348	77,376	76,309	75,238	74,125	(4,223)	(5.4%)	9	81	72
Lawrence	12,691	12,812	12,629	12,448	12,586	(105)	(0.8%)	62	26	29
Leake	22,777	22,789	22,819	22,791	22,786	9	0.0%	41	19	19
Lee	84,740	84,837	85,071	85,276	85,436	696	0.8%	7	12	15
Leflore	30,241	29,779	29,292	28,616	28,183	(2,058)	(6.8%)	32	76	75
Lincoln	34,522	34,375	34,340	34,210	34,153	(369)	(1.1%)	24	46	34
Lowndes	59,697	59,549	59,147	58,760	58,595	(1,102)	(1.8%)	12	73	43
Madison	102,453	103,852	104,584	105,648	106,272	3,819	3.7%	6	4	7
Marion	25,412	25,106	25,108	24,752	24,573	(839)	(3.3%)	38	71	61

SOURCE: U.S. Census Bureau

## POPULATION DEMOGRAPHICS

	% FEMALE		% MALE		% WHITE		% BLACK		% OTHER		% HISPANIC	
	2015	2019	2015	2019	2015	2019	2015	2019	2015	2019	2015	2019
MISSISSIPPI	51.5	51.5	48.5	48.5	59.5	59.1	37.6	37.8	2.9	3.1	3.0	3.4
Adams	49.2	48.0	50.8	52.0	44.5	44.4	53.4	53.4	2.1	2.1	8.6	10.1
Alcorn	51.0	51.3	49.0	48.7	85.8	85.5	12.4	12.4	1.9	2.1	3.1	3.2
Amite	51.7	51.7	48.3	48.3	58.3	58.6	40.7	40.0	1.0	1.4	1.1	1.3
Attala	52.7	52.7	47.3	47.3	55.7	54.6	42.9	43.6	1.4	1.8	2.0	2.0
Benton	50.2	50.6	49.8	49.4	62.0	62.2	36.2	35.8	1.8	2.0	2.4	2.6
Bolivar	53.1	53.4	46.9	46.6	33.8	34.2	64.4	63.7	1.8	2.1	2.1	2.2
Calhoun	52.3	51.9	47.7	48.1	70.0	69.7	28.4	28.5	1.7	1.8	5.6	6.3
Carroll	49.6	49.7	50.4	50.3	65.2	65.4	33.4	33.0	1.4	1.6	1.4	1.6
Chickasaw	51.3	50.6	48.7	49.4	53.8	52.7	44.1	44.6	2.1	2.7	4.5	5.4
Choctaw	51.1	51.2	48.9	48.8	69.0	68.1	29.3	29.7	1.7	2.2	1.8	1.6
Claiborne	52.8	52.7	47.2	47.3	12.6	11.4	85.7	86.6	1.7	2.0	1.4	1.4
Clarke	52.4	53.0	47.6	47.0	64.6	63.8	34.1	34.7	1.3	1.4	1.0	1.1
Clay	52.9	53.2	47.1	46.8	40.0	39.3	58.7	59.3	1.3	1.4	1.3	1.6
Coahoma	53.9	53.7	46.1	46.3	22.3	20.9	76.4	77.6	1.4	1.5	1.4	1.7
Copiah	52.0	52.0	48.0	48.0	46.8	46.3	51.6	51.9	1.7	1.7	3.0	3.3
Covington	51.1	51.2	48.9	48.8	62.4	62.0	36.0	36.1	1.6	1.9	2.4	2.4
DeSoto	51.6	51.9	48.4	48.1	71.2	66.4	25.5	30.1	3.3	3.5	4.8	5.1
Forrest	52.4	52.8	47.6	47.2	59.4	59.2	37.6	37.8	2.9	3.0	3.0	3.0
Franklin	51.1	50.9	48.9	49.1	63.6	63.6	34.9	34.5	1.5	1.8	0.9	1.2
George	49.4	49.5	50.6	50.5	89.9	89.7	8.1	7.7	2.0	2.6	2.6	3.0
Greene	42.8	42.2	57.2	57.8	73.8	73.2	24.8	25.4	1.4	1.4	1.1	1.2
Grenada	52.4	52.5	47.6	47.5	56.0	55.3	42.4	42.9	1.6	1.9	1.2	1.6
Hancock	50.8	51.2	49.2	48.8	88.1	87.7	8.2	8.4	3.7	3.9	3.8	3.9
Harrison	50.7	51.1	49.3	48.9	69.2	67.8	24.6	25.9	6.2	6.2	5.4	5.6
Hinds	53.2	53.3	46.8	46.7	26.4	25.1	71.7	73.1	1.9	1.8	1.5	1.6
Holmes	52.4	52.4	47.6	47.6	16.2	15.7	82.6	83.1	1.2	1.2	1.1	1.2
Humphreys	52.8	52.8	47.2	47.2	22.7	22.3	75.7	75.8	1.6	1.9	2.9	3.8
Issaquena	42.1	40.2	57.9	59.8	34.9	34.9	63.9	63.8	1.2	1.4	1.6	1.7
Itawamba	50.9	50.5	49.1	49.5	91.7	91.0	6.7	7.0	1.6	2.0	1.5	1.7
Jackson	50.8	50.9	49.2	49.1	73.4	73.3	21.9	21.7	4.7	5.1	5.9	6.8
Jasper	51.5	51.6	48.5	48.4	45.9	45.5	52.8	53.2	1.3	1.3	1.2	1.4
Jefferson	50.6	50.8	49.4	49.2	13.5	13.3	85.7	85.4	0.8	1.2	0.7	0.9
Jefferson Davis	52.4	52.7	47.6	47.3	38.7	38.8	59.8	59.6	1.5	1.6	1.3	1.9
Jones	51.4	51.5	48.6	48.5	68.4	68.1	29.5	29.7	2.1	2.2	4.3	4.7
Kemper	50.0	49.8	50.0	50.2	34.4	34.1	61.0	61.4	4.6	4.5	1.0	0.9
Lafayette	51.2	51.5	48.8	48.5	72.5	72.4	23.8	23.7	3.8	3.9	2.6	2.7
Lamar	51.9	52.0	48.1	48.0	76.9	75.7	20.1	21.0	3.0	3.4	2.5	2.9
Lauderdale	51.6	51.6	48.4	48.4	54.7	53.6	43.2	44.2	2.1	2.2	2.3	2.3
Lawrence	51.1	51.5	48.9	48.5	66.7	66.0	31.8	32.4	1.5	1.6	1.9	2.2
Leake	48.5	48.4	51.5	51.6	49.9	49.4	41.6	42.1	8.4	8.4	4.4	4.8
Lee	52.0	52.3	48.0	47.7	68.6	66.8	29.0	30.6	2.4	2.6	2.6	2.7
Leflore	53.3	53.5	46.7	46.5	24.3	23.1	74.0	75.0	1.7	1.9	2.6	2.8
Lincoln	52.2	52.2	47.8	47.8	68.0	67.9	30.6	30.3	1.4	1.8	1.1	1.3
Lowndes	52.2	52.4	47.8	47.6	53.9	52.8	43.8	44.8	2.3	2.5	2.0	2.1
Madison	52.1	52.2	47.9	47.8	58.1	57.5	38.2	38.3	3.8	4.3	2.9	3.1
Marion	51.8	51.4	48.2	48.6	66.0	66.5	32.2	31.6	1.7	1.9	1.4	1.8

SOURCE: U.S. Census Bureau



## TOTAL POPULATION

	2015	2016	2017	2018	2019	2015 to 2019		RANK		
						NET CHG	PCT CHG	POP 20 19	NET CHG	PCT CHG
Marshall	35,891	35,785	35,590	35,436	35,294	(597)	(1.7%)	21	60	41
Monroe	35,823	35,897	35,851	35,543	35,252	(571)	(1.6%)	22	59	40
Montgomery	10,195	10,235	10,143	9,994	9,775	(420)	(4.1%)	69	48	64
Neshoba	29,481	29,473	29,435	29,151	29,118	(363)	(1.2%)	29	45	36
Newton	21,569	21,461	21,396	21,355	21,018	(551)	(2.6%)	44	58	52
Noxubee	10,942	10,879	10,711	10,550	10,417	(525)	(4.8%)	67	56	67
Oktibbeha	49,510	49,534	49,678	49,249	49,587	77	0.2%	15	16	18
Panola	34,202	34,241	34,158	34,156	34,192	(10)	(0.0%)	23	21	21
Pearl River	54,944	55,037	55,255	55,323	55,535	591	1.1%	13	13	14
Perry	12,071	12,056	12,014	11,918	11,973	(98)	(0.8%)	65	25	28
Pike	39,890	39,592	39,510	39,380	39,288	(602)	(1.5%)	19	61	38
Pontotoc	30,857	31,470	31,709	31,881	32,174	1,317	4.3%	25	9	4
Prentiss	25,440	25,405	25,215	25,088	25,126	(314)	(1.2%)	36	40	37
Quitman	7,511	7,368	7,208	7,055	6,792	(719)	(9.6%)	80	68	81
Rankin	149,447	151,514	152,904	154,250	155,271	5,824	3.9%	4	3	6
Scott	28,432	28,351	28,436	28,319	28,124	(308)	(1.1%)	33	39	35
Sharkey	4,563	4,513	4,415	4,375	4,321	(242)	(5.3%)	81	34	71
Simpson	27,169	26,992	26,905	26,717	26,658	(511)	(1.9%)	35	54	45
Smith	16,079	15,949	16,073	16,029	15,916	(163)	(1.0%)	56	30	32
Stone	18,271	18,183	18,593	17,997	18,336	65	0.4%	50	17	16
Sunflower	26,877	26,493	26,142	26,211	25,110	(1,767)	(6.6%)	37	75	74
Tallahatchie	14,582	14,342	14,094	13,961	13,809	(773)	(5.3%)	60	69	70
Tate	28,465	28,306	28,581	28,347	28,321	(144)	(0.5%)	31	27	24
Tippah	22,018	22,063	21,953	22,039	22,015	(3)	(0.0%)	43	20	20
Tishomingo	19,481	19,442	19,518	19,383	19,383	(98)	(0.5%)	47	24	23
Tunica	10,264	10,139	9,984	9,922	9,632	(632)	(6.2%)	72	63	73
Union	28,311	28,308	28,486	28,615	28,815	504	1.8%	30	14	11
Walthall	14,601	14,556	14,505	14,436	14,286	(315)	(2.2%)	59	42	49
Warren	47,481	46,958	46,682	46,093	45,381	(2,100)	(4.4%)	17	77	66
Washington	47,959	47,183	46,197	45,036	43,909	(4,050)	(8.4%)	18	80	80
Wayne	20,497	20,460	20,430	20,296	20,183	(314)	(1.5%)	46	41	39
Webster	9,873	9,758	9,732	9,788	9,689	(184)	(1.9%)	71	32	44
Wilkinson	9,089	9,020	8,855	8,781	8,630	(459)	(5.1%)	74	49	68
Winston	18,447	18,340	18,237	18,164	17,955	(492)	(2.7%)	52	52	54
Yalobusha	12,458	12,461	12,449	12,361	12,108	(350)	(2.8%)	64	44	57
Yazoo	27,411	27,972	28,659	29,093	29,690	2,279	8.3%	28	6	1

## METROPOLITAN STATISTICAL AREAS

G-B-P	388,333	390,682	394,161	396,689	399,329	10,996	2.8%	2	1	1
HATTIESBURG	148,630	148,984	148,705	149,467	150,213	1,583	1.1%	3	2	2
JACKSON	579,561	581,153	581,509	579,932	577,796	(1,765)	(0.3%)	1	3	3

## WORKFORCE DEVELOPMENT AREAS

DELTA	272,541	268,558	264,039	259,979	255,048	(17,493)	(6.4%)	4	4	4
MS PARTNERSHIP	877,649	880,075	883,190	882,975	885,430	7,781	0.9%	2	1	1
SC MS WORKS	806,390	806,641	805,947	802,574	798,801	(7,589)	(0.9%)	3	3	3
TWIN DISTRICTS	1,031,891	1,032,664	1,035,334	1,035,492	1,036,870	4,979	0.5%	1	2	2

SOURCE: U.S. Census Bureau

## POPULATION DEMOGRAPHICS

	% FEMALE		% MALE		% WHITE		% BLACK		% OTHER		% HISPANIC	
	2015	2019	2015	2019	2015	2019	2015	2019	2015	2019	2015	2019
Marshall	50.5	50.5	49.5	49.5	50.5	51.1	48.0	47.1	1.6	1.9	3.5	4.0
Monroe	52.3	52.4	47.7	47.6	68.0	68.0	30.7	30.5	1.4	1.5	1.1	1.4
Montgomery	52.3	51.9	47.7	48.1	53.0	53.2	45.5	44.8	1.5	2.0	1.3	1.5
Neshoba	52.3	52.3	47.7	47.7	60.1	58.8	21.0	21.3	18.9	19.9	1.9	2.2
Newton	52.2	52.1	47.8	47.9	62.6	61.6	30.6	31.2	6.8	7.2	1.8	2.0
Noxubee	52.6	52.8	47.4	47.2	27.0	26.7	71.7	71.8	1.2	1.4	1.4	1.5
Oktibbeha	49.9	50.1	50.1	49.9	58.0	57.5	37.3	37.6	4.7	4.9	1.6	1.7
Panola	51.8	52.1	48.2	47.9	48.6	48.2	49.8	50.1	1.6	1.7	1.8	2.2
Pearl River	50.6	50.8	49.4	49.2	84.7	84.5	12.5	12.3	2.8	3.2	2.9	3.3
Perry	50.9	51.1	49.1	48.9	78.6	78.8	19.6	19.2	1.8	2.0	1.4	1.6
Pike	52.6	52.7	47.4	47.3	44.8	43.8	53.3	54.1	1.9	2.1	1.6	1.6
Pontotoc	50.7	51.1	49.3	48.9	82.4	81.8	15.5	15.6	2.1	2.6	6.3	7.3
Prentiss	51.0	50.9	49.0	49.1	84.1	83.7	14.1	14.3	1.8	2.0	1.3	1.6
Quitman	52.6	53.6	47.4	46.4	27.9	26.5	70.4	71.7	1.8	1.9	1.3	1.8
Rankin	51.7	51.9	48.3	48.1	77.3	75.5	20.0	21.6	2.7	2.9	2.7	2.8
Scott	51.2	50.9	48.8	49.1	58.4	58.2	38.6	38.6	2.9	3.2	10.9	11.9
Sharkey	53.5	52.2	46.5	47.8	27.9	27.5	70.9	71.0	1.3	1.6	1.9	2.3
Simpson	51.4	51.6	48.6	48.4	62.8	62.7	35.5	35.2	1.7	2.2	1.8	1.9
Smith	51.8	51.7	48.2	48.3	76.0	75.3	22.9	23.7	1.0	1.0	1.7	1.8
Stone	49.6	49.9	50.4	50.1	78.4	78.4	19.4	19.1	2.1	2.5	2.0	2.1
Sunflower	47.4	46.6	52.6	53.4	24.9	24.7	73.8	73.8	1.3	1.5	1.7	2.0
Tallahatchie	44.6	44.5	55.4	55.5	40.7	40.2	56.8	57.0	2.5	2.8	6.4	6.9
Tate	51.8	52.0	48.2	48.0	66.7	67.1	31.5	30.9	1.8	2.0	2.6	2.8
Tippah	50.9	51.3	49.1	48.7	81.4	80.9	16.5	16.7	2.1	2.4	4.7	4.8
Tishomingo	51.5	51.2	48.5	48.8	96.1	95.9	2.5	2.5	1.4	1.6	3.0	3.4
Tunica	52.9	53.2	47.1	46.8	21.1	20.2	76.9	77.6	2.1	2.2	2.3	2.5
Union	51.0	51.1	49.0	48.9	82.4	81.3	14.8	15.4	2.8	3.3	4.4	4.5
Walthall	51.8	51.6	48.2	48.4	54.4	54.3	43.4	43.2	2.2	2.5	2.0	2.2
Warren	52.4	52.4	47.6	47.6	49.2	48.4	48.7	49.3	2.1	2.3	2.0	2.2
Washington	53.2	53.9	46.8	46.1	26.4	25.8	72.0	72.4	1.6	1.8	1.5	1.7
Wayne	51.6	52.0	48.4	48.0	58.9	58.6	39.7	39.8	1.4	1.6	1.6	1.6
Webster	50.9	51.2	49.1	48.8	79.5	79.6	18.9	18.7	1.6	1.6	1.5	1.5
Wilkinson	47.0	46.0	53.0	54.0	28.6	28.2	70.4	70.6	1.0	1.2	0.9	1.0
Winston	51.3	51.0	48.7	49.0	51.3	50.7	46.4	46.8	2.3	2.5	1.2	1.4
Yalobusha	52.0	52.1	48.0	47.9	59.0	59.3	39.3	38.9	1.7	1.9	1.5	1.7
Yazoo	45.1	40.2	54.9	59.8	40.5	40.5	57.5	57.1	2.0	2.4	5.6	8.5

## METROPOLITAN STATISTICAL AREAS

G-B-P	50.8	51.1	49.2	48.9	73.0	72.2	21.7	22.3	5.4	5.5	5.4	5.8
HATTIESBURG	52.1	52.4	47.9	47.6	68.1	67.7	29.0	29.2	2.9	3.1	2.7	2.8
JACKSON	52.1	51.9	47.9	48.1	48.5	48.2	49.1	49.3	2.4	2.6	2.3	2.6

## WORKFORCE DEVELOPMENT AREAS

DELTA	51.8	51.9	48.2	48.1	30.7	30.4	67.7	67.8	1.6	1.8	2.1	2.3
MS PARTNERSHIP	51.5	51.6	48.5	48.4	67.9	66.7	29.6	30.6	2.5	2.7	3.0	3.3
SC MS WORKS	51.9	51.8	48.1	48.2	48.8	48.4	49.0	49.2	2.2	2.4	2.4	2.7
TWIN DISTRICTS	51.0	51.2	49.0	48.8	68.3	67.8	27.6	27.8	4.1	4.4	3.8	4.2

SOURCE: U.S. Census Bureau

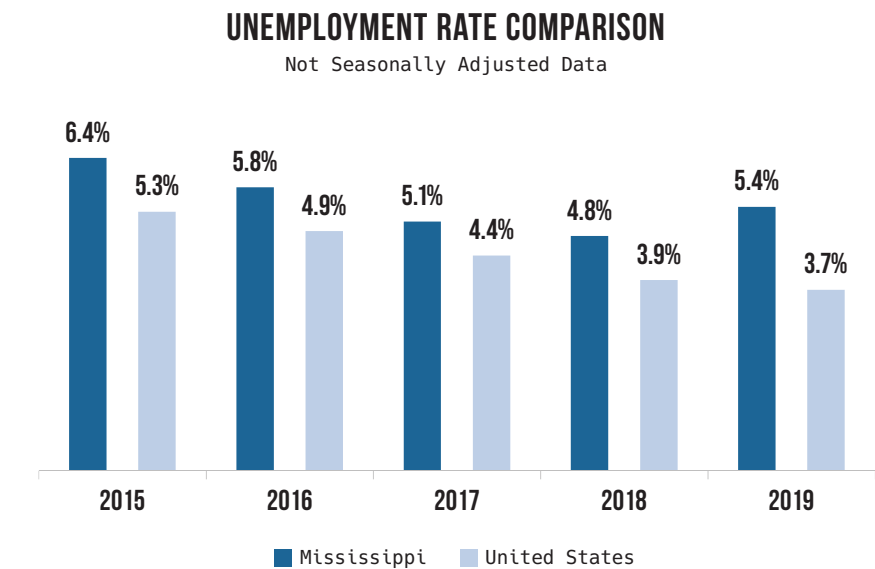
# LABOR MARKET

*Twenty-five counties recorded rates equal to or lower than the state*



Mississippi's annual average unemployment rate increased six-tenths of a percentage point when compared to last year's rate of 4.8%. When compared to 2015 the rate is one percentage point lower. The civilian labor force shows an increase of 10,800 when compared to 2015, and was 6,900 more than in 2018. An analysis of the unemployment rate at the county level reveals that only Jefferson County had a rate over 15%, its highest of the five-year period. Claiborne, Issaquena, Holmes and Wilkinson Counties also faced double-digit unemployment rates at 10.9%, 10.5%, 10.4% and 10.3% respectively for 2019. Holmes County was the only one of this group whose labor force remained unchanged from 2018 to 2019. Out of the eighty-two counties, there were twenty-five recording rates equal to or lower than the state's average annual rate of 5.4%. Rankin had the lowest rate at 3.9% followed by Union at 4.1%.

Following the state's trajectory, the Workforce Development Areas likewise had a slight rise in their unemployment rates over the year, but all decreased when compared to the 2015 rates. Delta WDA's jobless rate remained the highest of the four at 7.5%; the



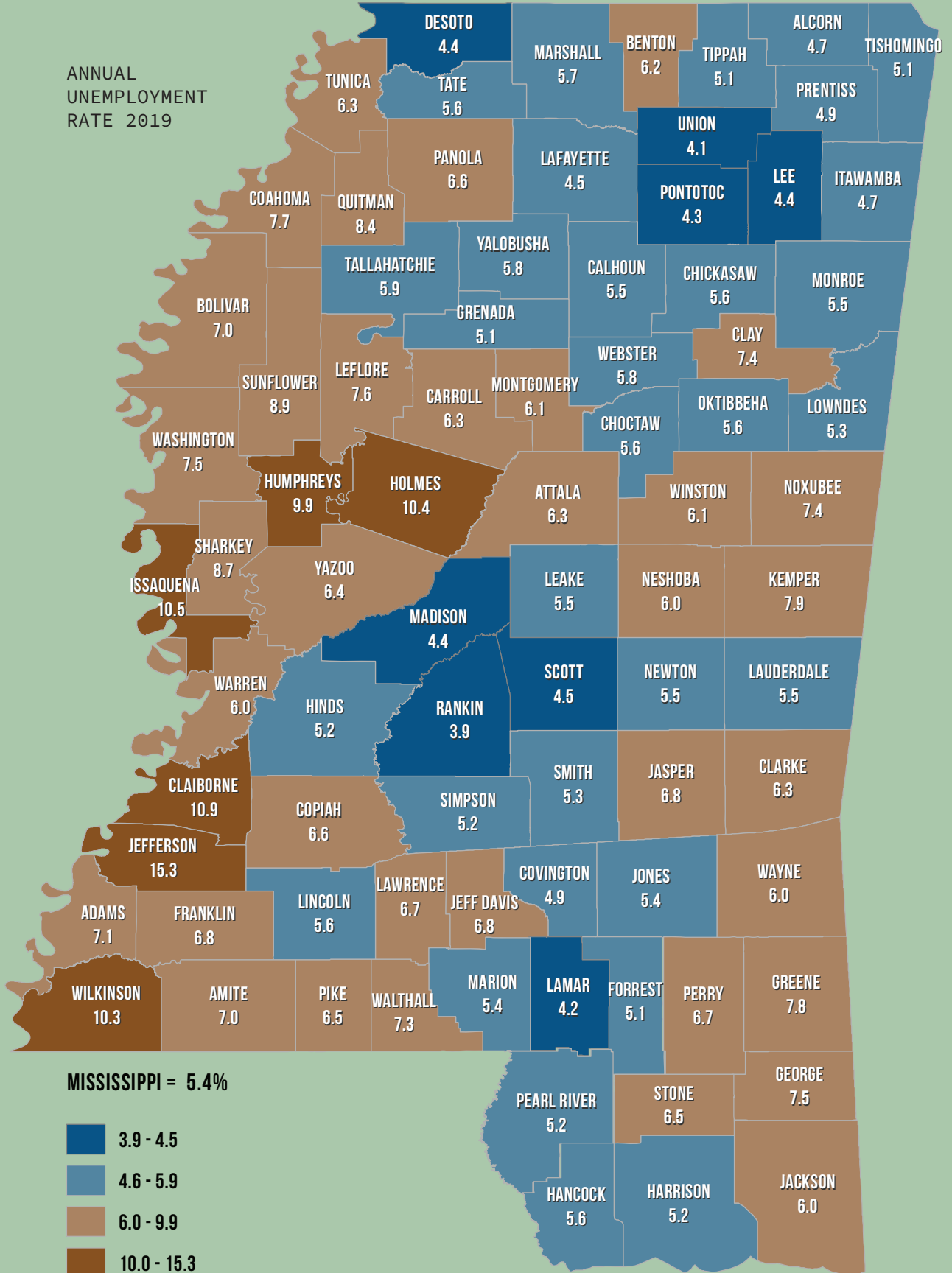
number employed continued to decline. Mississippi Partnership WDA had the lowest unemployment rate at 5.0%; the number of employed individuals (384,310) rose 5.2% since 2015; and the civilian labor force rose by 15,580 or 4.0% over the five-year period, the highest of all the WDAs. Even though Claiborne, Jefferson, and Wilkinson, three counties with double-digit unemployment rates, are located in the Southcentral

Mississippi Works WDA, the area's overall rate decreased six-tenths of a percentage point over the five-year period. Jackson MSA, which includes, Hinds, Madison and Rankin—counties with low rates and large labor pools—continues to drive the area's rate of 5.3%. Twin Districts WDA's unemployment rate of 5.5% continues to mirror the state average rate, which it has done each year since 2015.



REFLECTIONS

ANNUAL  
UNEMPLOYMENT  
RATE 2019



MISSISSIPPI = 5.4%



SOURCE: MISSISSIPPI DEPARTMENT OF EMPLOYMENT SECURITY

## CIVILIAN LABOR FORCE

Annual Averages

							2015 TO 2019	
		2015	2016	2017	2018	2019	NET CHG	PCT CHG
Adams	Civilian Labor Force	11,430	11,270	11,250	11,220	11,270	(160)	(1.4%)
	Unemployed	910	930	820	710	800	(110)	(12.1%)
	Unemployment Rate	8.0	8.3	7.3	6.3	7.1	(0.9)	<del>XXX</del>
	Employed	10,520	10,340	10,430	10,510	10,470	(50)	(0.5%)
Alcorn	Civilian Labor Force	15,750	15,840	16,060	16,100	16,060	310	2.0%
	Unemployed	890	820	710	670	760	(130)	(14.6%)
	Unemployment Rate	5.7	5.2	4.4	4.2	4.7	(0.9)	<del>XXX</del>
	Employed	14,860	15,020	15,350	15,430	15,300	440	3.0%
Amite	Civilian Labor Force	4,520	4,520	4,470	4,380	4,420	(100)	(2.2%)
	Unemployed	340	330	300	270	310	(30)	(8.8%)
	Unemployment Rate	7.5	7.3	6.7	6.2	7.0	(0.5)	<del>XXX</del>
	Employed	4,180	4,190	4,170	4,110	4,110	(70)	(1.7%)
Attala	Civilian Labor Force	6,990	7,030	6,970	6,960	7,030	40	0.6%
	Unemployed	530	470	420	400	440	(90)	(17.0%)
	Unemployment Rate	7.6	6.7	6.0	5.7	6.3	(1.3)	<del>XXX</del>
	Employed	6,460	6,560	6,550	6,560	6,590	130	2.0%
Benton	Civilian Labor Force	2,990	3,060	3,040	3,030	3,060	70	2.3%
	Unemployed	240	210	170	170	190	(50)	(20.8%)
	Unemployment Rate	8.0	6.9	5.6	5.6	6.2	(1.8)	<del>XXX</del>
	Employed	2,750	2,850	2,870	2,860	2,870	120	4.4%
Bolivar	Civilian Labor Force	13,400	13,420	12,920	12,390	12,260	(1,140)	(8.5%)
	Unemployed	1,050	970	830	760	860	(190)	(18.1%)
	Unemployment Rate	7.8	7.2	6.4	6.1	7.0	(0.8)	<del>XXX</del>
	Employed	12,350	12,450	12,090	11,630	11,400	(950)	(7.7%)
Calhoun	Civilian Labor Force	6,150	6,190	5,640	5,560	5,660	(490)	(8.0%)
	Unemployed	380	330	260	260	310	(70)	(18.4%)
	Unemployment Rate	6.2	5.3	4.6	4.7	5.5	(0.7)	<del>XXX</del>
	Employed	5,770	5,860	5,380	5,300	5,350	(420)	(7.3%)
Carroll	Civilian Labor Force	3,460	3,570	3,540	3,450	3,470	10	0.3%
	Unemployed	280	260	210	200	220	(60)	(21.4%)
	Unemployment Rate	8.1	7.3	5.9	5.8	6.3	(1.8)	<del>XXX</del>
	Employed	3,180	3,310	3,330	3,250	3,250	70	2.2%
Chickasaw	Civilian Labor Force	7,160	7,110	7,080	7,000	6,920	(240)	(3.4%)
	Unemployed	550	470	370	350	390	(160)	(29.1%)
	Unemployment Rate	7.7	6.6	5.2	5.0	5.6	(2.0)	<del>XXX</del>
	Employed	6,610	6,640	6,710	6,650	6,530	(80)	(1.2%)
Choctaw	Civilian Labor Force	3,710	3,730	3,620	3,710	3,760	50	1.3%
	Unemployed	230	210	180	180	210	(20)	(8.7%)
	Unemployment Rate	6.2	5.6	5.0	4.9	5.6	(0.6)	<del>XXX</del>
	Employed	3,480	3,520	3,440	3,530	3,550	70	2.0%
Claiborne	Civilian Labor Force	3,120	3,100	3,030	3,020	3,040	(80)	(2.6%)
	Unemployed	390	350	300	280	330	(60)	(15.4%)
	Unemployment Rate	12.5	11.3	9.9	9.3	10.9	(1.6)	<del>XXX</del>
	Employed	2,730	2,750	2,730	2,740	2,710	(20)	(0.7%)
Clarke	Civilian Labor Force	6,090	6,090	6,170	5,940	5,920	(170)	(2.8%)
	Unemployed	480	410	370	330	370	(110)	(22.9%)
	Unemployment Rate	7.9	6.7	6.0	5.6	6.3	(1.6)	<del>XXX</del>
	Employed	5,610	5,680	5,800	5,610	5,550	(60)	(1.1%)

SOURCE: MS Department of Employment Security, Labor Market Information Department in cooperation with U.S. Department of Labor, Bureau of Labor Statistics

# CIVILIAN LABOR FORCE

Annual Averages

							2015 TO 2019	
		2015	2016	2017	2018	2019	NET CHG	PCT CHG
Clay	Civilian Labor Force	8,030	8,030	7,750	7,690	7,790	(240)	(3.0%)
	Unemployed	770	650	530	470	580	(190)	(24.7%)
	Unemployment Rate	9.6	8.1	6.8	6.1	7.4	(2.1)	XXX
	Employed	7,260	7,380	7,220	7,220	7,210	(50)	(0.7%)
Coahoma	Civilian Labor Force	9,460	9,230	8,630	8,380	8,360	(1,100)	(11.6%)
	Unemployed	950	800	640	590	640	(310)	(32.6%)
	Unemployment Rate	10.0	8.7	7.4	7.0	7.7	(2.4)	XXX
	Employed	8,510	8,430	7,990	7,790	7,720	(790)	(9.3%)
Copiah	Civilian Labor Force	11,270	11,300	11,270	11,140	11,230	(40)	(0.4%)
	Unemployed	810	740	640	630	740	(70)	(8.6%)
	Unemployment Rate	7.2	6.5	5.7	5.7	6.6	(0.6)	XXX
	Employed	10,460	10,560	10,630	10,510	10,490	30	0.3%
Covington	Civilian Labor Force	7,980	8,170	8,110	8,070	8,140	160	2.0%
	Unemployed	470	440	390	360	400	(70)	(14.9%)
	Unemployment Rate	5.9	5.4	4.8	4.5	4.9	(1.0)	XXX
	Employed	7,510	7,730	7,720	7,710	7,740	230	3.1%
DeSoto	Civilian Labor Force	84,660	87,410	88,830	90,550	91,400	6,740	8.0%
	Unemployed	4,050	3,670	3,410	3,460	4,020	(30)	(0.7%)
	Unemployment Rate	4.8	4.2	3.8	3.8	4.4	(0.4)	XXX
	Employed	80,610	83,740	85,420	87,090	87,380	6,770	8.4%
Forrest	Civilian Labor Force	32,880	33,430	33,530	33,100	33,290	410	1.2%
	Unemployed	2,060	1,910	1,630	1,490	1,710	(350)	(17.0%)
	Unemployment Rate	6.3	5.7	4.9	4.5	5.1	(1.1)	XXX
	Employed	30,820	31,520	31,900	31,610	31,580	760	2.5%
Franklin	Civilian Labor Force	2,930	2,860	2,870	2,810	2,810	(120)	(4.1%)
	Unemployed	220	210	200	170	190	(30)	(13.6%)
	Unemployment Rate	7.5	7.3	7.0	6.0	6.8	(0.7)	XXX
	Employed	2,710	2,650	2,670	2,640	2,620	(90)	(3.3%)
George	Civilian Labor Force	8,860	8,830	8,850	8,790	8,850	(10)	(0.1%)
	Unemployed	660	650	630	580	660	0	0.0%
	Unemployment Rate	7.4	7.4	7.1	6.6	7.5	0.0	XXX
	Employed	8,200	8,180	8,220	8,210	8,190	(10)	(0.1%)
Greene	Civilian Labor Force	4,340	4,290	4,380	4,290	4,350	10	0.2%
	Unemployed	330	310	330	270	340	10	3.0%
	Unemployment Rate	7.6	7.2	7.5	6.3	7.8	0.2	XXX
	Employed	4,010	3,980	4,050	4,020	4,010	0	0.0%
Grenada	Civilian Labor Force	9,490	9,620	9,660	9,560	9,500	10	0.1%
	Unemployed	560	490	440	410	480	(80)	(14.3%)
	Unemployment Rate	5.9	5.1	4.6	4.3	5.1	(0.8)	XXX
	Employed	8,930	9,130	9,220	9,150	9,020	90	1.0%
Hancock	Civilian Labor Force	18,700	18,900	18,760	18,660	18,780	80	0.4%
	Unemployed	1,210	1,150	1,040	960	1,060	(150)	(12.4%)
	Unemployment Rate	6.5	6.1	5.5	5.1	5.6	(0.8)	XXX
	Employed	17,490	17,750	17,720	17,700	17,720	230	1.3%
Harrison	Civilian Labor Force	85,750	86,860	86,240	85,850	86,480	730	0.9%
	Unemployed	5,080	4,780	4,190	3,990	4,460	(620)	(12.2%)
	Unemployment Rate	5.9	5.5	4.9	4.6	5.2	(0.8)	XXX
	Employed	80,670	82,080	82,050	81,860	82,020	1,350	1.7%

SOURCE: MS Department of Employment Security, Labor Market Information Department in cooperation with U.S. Department of Labor, Bureau of Labor Statistics



# CIVILIAN LABOR FORCE

Annual Averages

							2015 TO 2019	
		2015	2016	2017	2018	2019	NET CHG	PCT CHG
<b>Hinds</b>	Civilian Labor Force	109,340	110,160	109,420	106,910	107,150	(2,190)	(2.0%)
	Unemployed	6,570	5,980	5,310	5,070	5,620	(950)	(14.5%)
	Unemployment Rate	6.0	5.4	4.9	4.7	5.2	(0.8)	<del>XXX</del>
	Employed	102,770	104,180	104,110	101,840	101,530	(1,240)	(1.2%)
<b>Holmes</b>	Civilian Labor Force	6,130	5,990	5,830	5,680	5,680	(450)	(7.3%)
	Unemployed	740	660	550	510	590	(150)	(20.3%)
	Unemployment Rate	12.1	11.0	9.4	9.0	10.4	(1.7)	<del>XXX</del>
<b>Humphreys</b>	Civilian Labor Force	5,390	5,330	5,280	5,170	5,090	(300)	(5.6%)
	Unemployed	2,470	2,380	2,210	2,200	2,220	(250)	(10.1%)
	Unemployment Rate	310	270	210	200	220	(90)	(29.0%)
<b>Humphreys</b>	Unemployment Rate	12.6	11.3	9.5	9.1	9.9	(2.6)	<del>XXX</del>
	Employed	2,160	2,110	2,000	2,000	2,000	(160)	(7.4%)
	Civilian Labor Force	420	410	400	370	380	(40)	(9.5%)
	Unemployed	70	60	50	30	40	(30)	(42.9%)
<b>Issaquena</b>	Unemployment Rate	16.7	14.6	12.5	8.1	10.5	(6.1)	<del>XXX</del>
	Employed	350	350	350	340	340	(10)	(2.9%)
	Civilian Labor Force	10,220	10,420	10,530	10,380	10,540	320	3.1%
<b>Itawamba</b>	Unemployed	580	530	440	420	500	(80)	(13.8%)
	Unemployment Rate	5.7	5.1	4.2	4.0	4.7	(0.9)	<del>XXX</del>
	Employed	9,640	9,890	10,090	9,960	10,040	400	4.1%
<b>Jackson</b>	Civilian Labor Force	59,040	59,190	58,610	58,250	58,590	(450)	(0.8%)
	Unemployed	4,140	3,880	3,470	3,310	3,530	(610)	(14.7%)
	Unemployment Rate	7.0	6.6	5.9	5.7	6.0	(1.0)	<del>XXX</del>
	Employed	54,900	55,310	55,140	54,940	55,060	160	0.3%
<b>Jasper</b>	Civilian Labor Force	6,370	6,210	6,090	5,990	6,180	(190)	(3.0%)
	Unemployed	500	480	400	360	420	(80)	(16.0%)
	Unemployment Rate	7.8	7.7	6.6	6.0	6.8	(1.1)	<del>XXX</del>
	Employed	5,870	5,730	5,690	5,630	5,760	(110)	(1.9%)
<b>Jefferson</b>	Civilian Labor Force	2,280	2,230	2,120	2,030	2,020	(260)	(11.4%)
	Unemployed	340	330	310	270	310	(30)	(8.8%)
	Unemployment Rate	14.9	14.8	14.6	13.3	15.3	0.4	<del>XXX</del>
	Employed	1,940	1,900	1,810	1,760	1,710	(230)	(11.9%)
<b>Jefferson Davis</b>	Civilian Labor Force	4,130	4,180	4,240	4,100	4,120	(10)	(0.2%)
	Unemployed	360	340	290	280	280	(80)	(22.2%)
	Unemployment Rate	8.7	8.1	6.8	6.8	6.8	(1.9)	<del>XXX</del>
	Employed	3,770	3,840	3,950	3,820	3,840	70	1.9%
<b>Jones</b>	Civilian Labor Force	26,580	25,840	25,450	25,570	26,260	(320)	(1.2%)
	Unemployed	1,590	1,580	1,320	1,260	1,420	(170)	(10.7%)
	Unemployment Rate	6.0	6.1	5.2	4.9	5.4	(0.6)	<del>XXX</del>
	Employed	24,990	24,260	24,130	24,310	24,840	(150)	(0.6%)
<b>Kemper</b>	Civilian Labor Force	3,580	3,560	3,600	3,570	3,550	(30)	(0.8%)
	Unemployed	370	310	280	270	280	(90)	(24.3%)
	Unemployment Rate	10.3	8.7	7.8	7.6	7.9	(2.4)	<del>XXX</del>
	Employed	3,210	3,250	3,320	3,300	3,270	60	1.9%
<b>Lafayette</b>	Civilian Labor Force	24,470	26,030	27,590	28,120	28,390	3,920	16.0%
	Unemployed	1,330	1,270	1,150	1,110	1,280	(50)	(3.8%)
	Unemployment Rate	5.4	4.9	4.2	3.9	4.5	(0.9)	<del>XXX</del>
	Employed	23,140	24,760	26,440	27,010	27,110	3,970	17.2%

SOURCE: MS Department of Employment Security, Labor Market Information Department in cooperation with U.S. Department of Labor, Bureau of Labor Statistics

# CIVILIAN LABOR FORCE

Annual Averages

							2015 TO 2019	
		2015	2016	2017	2018	2019	NET CHG	PCT CHG
Lamar	Civilian Labor Force	28,940	29,650	30,230	30,610	30,730	1,790	6.2%
	Unemployed	1,390	1,340	1,160	1,130	1,290	(100)	(7.2%)
	Unemployment Rate	4.8	4.5	3.8	3.7	4.2	(0.6)	<del>XXX</del>
	Employed	27,550	28,310	29,070	29,480	29,440	1,890	6.9%
Lauderdale	Civilian Labor Force	31,700	31,830	31,840	30,750	30,540	(1,160)	(3.7%)
	Unemployed	2,070	1,870	1,690	1,540	1,680	(390)	(18.8%)
	Unemployment Rate	6.5	5.9	5.3	5.0	5.5	(1.0)	<del>XXX</del>
	Employed	29,630	29,960	30,150	29,210	28,860	(770)	(2.6%)
Lawrence	Civilian Labor Force	4,750	4,680	4,700	4,640	4,620	(130)	(2.7%)
	Unemployed	340	330	310	280	310	(30)	(8.8%)
	Unemployment Rate	7.2	7.1	6.6	6.0	6.7	(0.4)	<del>XXX</del>
	Employed	4,410	4,350	4,390	4,360	4,310	(100)	(2.3%)
Leake	Civilian Labor Force	7,910	7,770	7,610	7,840	7,970	60	0.8%
	Unemployed	490	470	440	400	440	(50)	(10.2%)
	Unemployment Rate	6.2	6.0	5.8	5.1	5.5	(0.7)	<del>XXX</del>
	Employed	7,420	7,300	7,170	7,440	7,530	110	1.5%
Lee	Civilian Labor Force	39,910	40,870	41,210	40,720	41,210	1,300	3.3%
	Unemployed	2,210	1,980	1,650	1,590	1,800	(410)	(18.6%)
	Unemployment Rate	5.5	4.8	4.0	3.9	4.4	(1.2)	<del>XXX</del>
	Employed	37,700	38,890	39,560	39,130	39,410	1,710	4.5%
Leflore	Civilian Labor Force	10,500	10,350	10,150	9,940	10,020	(480)	(4.6%)
	Unemployed	1,130	940	760	690	760	(370)	(32.7%)
	Unemployment Rate	10.8	9.1	7.5	6.9	7.6	(3.2)	<del>XXX</del>
	Employed	9,370	9,410	9,390	9,250	9,260	(110)	(1.2%)
Lincoln	Civilian Labor Force	14,240	14,440	14,570	14,580	14,630	390	2.7%
	Unemployed	860	820	760	690	820	(40)	(4.7%)
	Unemployment Rate	6.0	5.7	5.2	4.7	5.6	(0.4)	<del>XXX</del>
	Employed	13,380	13,620	13,810	13,890	13,810	430	3.2%
Lowndes	Civilian Labor Force	25,150	25,550	25,340	25,140	25,450	300	1.2%
	Unemployed	1,760	1,560	1,360	1,230	1,360	(400)	(22.7%)
	Unemployment Rate	7.0	6.1	5.4	4.9	5.3	(1.7)	<del>XXX</del>
	Employed	23,390	23,990	23,980	23,910	24,090	700	3.0%
Madison	Civilian Labor Force	51,710	53,450	53,310	53,150	53,330	1,620	3.1%
	Unemployed	2,360	2,300	2,070	1,990	2,330	(30)	(1.3%)
	Unemployment Rate	4.6	4.3	3.9	3.7	4.4	(0.2)	<del>XXX</del>
	Employed	49,350	51,150	51,240	51,160	51,000	1,650	3.3%
Marion	Civilian Labor Force	10,020	10,280	10,220	10,020	9,940	(80)	(0.8%)
	Unemployed	730	670	560	520	540	(190)	(26.0%)
	Unemployment Rate	7.3	6.5	5.5	5.2	5.4	(1.9)	<del>XXX</del>
	Employed	9,290	9,610	9,660	9,500	9,400	110	1.2%
Marshall	Civilian Labor Force	14,460	14,580	14,400	14,350	14,500	40	0.3%
	Unemployed	1,040	880	740	720	830	(210)	(20.2%)
	Unemployment Rate	7.2	6.0	5.1	5.0	5.7	(1.5)	<del>XXX</del>
	Employed	13,420	13,700	13,660	13,630	13,670	250	1.9%
Monroe	Civilian Labor Force	15,500	15,660	15,610	15,420	15,530	30	0.2%
	Unemployed	1,140	980	810	760	850	(290)	(25.4%)
	Unemployment Rate	7.4	6.3	5.2	4.9	5.5	(1.9)	<del>XXX</del>
	Employed	14,360	14,680	14,800	14,660	14,680	320	2.2%

SOURCE: MS Department of Employment Security, Labor Market Information Department in cooperation with U.S. Department of Labor, Bureau of Labor Statistics

# CIVILIAN LABOR FORCE

Annual Averages

							2015 TO 2019	
		2015	2016	2017	2018	2019	NET CHG	PCT CHG
<b>Montgomery</b>	Civilian Labor Force	4,200	4,240	4,170	4,000	3,960	(240)	(5.7%)
	Unemployed	320	270	210	210	240	(80)	(25.0%)
	Unemployment Rate	7.6	6.4	5.0	5.3	6.1	(1.6)	<del>XXX</del>
	Employed	3,880	3,970	3,960	3,790	3,720	(160)	(4.1%)
<b>Neshoba</b>	Civilian Labor Force	10,640	10,730	10,410	10,160	10,250	(390)	(3.7%)
	Unemployed	650	620	540	510	610	(40)	(6.2%)
	Unemployment Rate	6.1	5.8	5.2	5.0	6.0	(0.2)	<del>XXX</del>
	Employed	9,990	10,110	9,870	9,650	9,640	(350)	(3.5%)
<b>Newton</b>	Civilian Labor Force	8,730	8,660	8,930	8,760	8,860	130	1.5%
	Unemployed	530	510	450	420	490	(40)	(7.5%)
	Unemployment Rate	6.1	5.9	5.0	4.8	5.5	(0.5)	<del>XXX</del>
	Employed	8,200	8,150	8,480	8,340	8,370	170	2.1%
<b>Noxubee</b>	Civilian Labor Force	3,960	3,970	3,910	3,810	3,790	(170)	(4.3%)
	Unemployed	390	330	290	260	280	(110)	(28.2%)
	Unemployment Rate	9.8	8.3	7.4	6.8	7.4	(2.5)	<del>XXX</del>
	Employed	3,570	3,640	3,620	3,550	3,510	(60)	(1.7%)
<b>Oktober</b>	Civilian Labor Force	22,520	23,090	22,270	22,340	22,730	210	0.9%
	Unemployed	1,370	1,250	1,110	1,060	1,280	(90)	(6.6%)
	Unemployment Rate	6.1	5.4	5.0	4.7	5.6	(0.5)	<del>XXX</del>
	Employed	21,150	21,840	21,160	21,280	21,450	300	1.4%
<b>Panola</b>	Civilian Labor Force	13,460	13,200	13,080	12,820	12,560	(900)	(6.7%)
	Unemployed	1,170	970	880	780	830	(340)	(29.1%)
	Unemployment Rate	8.7	7.3	6.7	6.1	6.6	(2.1)	<del>XXX</del>
	Employed	12,290	12,230	12,200	12,040	11,730	(560)	(4.6%)
<b>Pearl River</b>	Civilian Labor Force	22,900	23,260	23,500	23,500	23,850	950	4.1%
	Unemployed	1,410	1,390	1,240	1,120	1,240	(170)	(12.1%)
	Unemployment Rate	6.2	6.0	5.3	4.8	5.2	(1.0)	<del>XXX</del>
	Employed	21,490	21,870	22,260	22,380	22,610	1,120	5.2%
<b>Perry</b>	Civilian Labor Force	4,320	4,360	4,320	4,260	4,300	(20)	(0.5%)
	Unemployed	340	310	270	250	290	(50)	(14.7%)
	Unemployment Rate	7.9	7.1	6.3	5.9	6.7	(1.1)	<del>XXX</del>
	Employed	3,980	4,050	4,050	4,010	4,010	30	0.8%
<b>Pike</b>	Civilian Labor Force	14,710	14,690	14,490	14,460	14,520	(190)	(1.3%)
	Unemployed	1,070	990	880	850	940	(130)	(12.1%)
	Unemployment Rate	7.3	6.7	6.1	5.9	6.5	(0.8)	<del>XXX</del>
	Employed	13,640	13,700	13,610	13,610	13,580	(60)	(0.4%)
<b>Pontotoc</b>	Civilian Labor Force	13,890	14,460	14,690	14,610	14,770	880	6.3%
	Unemployed	770	680	570	570	640	(130)	(16.9%)
	Unemployment Rate	5.5	4.7	3.9	3.9	4.3	(1.2)	<del>XXX</del>
	Employed	13,120	13,780	14,120	14,040	14,130	1,010	7.7%
<b>Prentiss</b>	Civilian Labor Force	11,010	11,080	11,220	11,240	11,340	330	3.0%
	Unemployed	670	600	510	490	560	(110)	(16.4%)
	Unemployment Rate	6.1	5.4	4.5	4.4	4.9	(1.1)	<del>XXX</del>
	Employed	10,340	10,480	10,710	10,750	10,780	440	4.3%
<b>Quitman</b>	Civilian Labor Force	2,690	2,630	2,440	2,350	2,380	(310)	(11.5%)
	Unemployed	290	260	220	180	200	(90)	(31.0%)
	Unemployment Rate	10.8	9.9	9.0	7.7	8.4	(2.4)	<del>XXX</del>
	Employed	2,400	2,370	2,220	2,170	2,180	(220)	(9.2%)

SOURCE: MS Department of Employment Security, Labor Market Information Department in cooperation with U.S. Department of Labor, Bureau of Labor Statistics



# CIVILIAN LABOR FORCE

Annual Averages

							2015 TO 2019	
		2015	2016	2017	2018	2019	NET CHG	PCT CHG
<b>Rankin</b>	Civilian Labor Force	73,090	75,050	76,190	76,100	76,240	3,150	4.3%
	Unemployed	3,020	2,960	2,730	2,650	3,010	(10)	(0.3%)
	Unemployment Rate	4.1	3.9	3.6	3.5	3.9	(0.2)	<del>XXX</del>
	Employed	70,070	72,090	73,460	73,450	73,230	3,160	4.5%
<b>Scott</b>	Civilian Labor Force	13,010	13,280	13,050	12,920	12,720	(290)	(2.2%)
	Unemployed	630	610	540	520	570	(60)	(9.5%)
	Unemployment Rate	4.8	4.6	4.1	4.0	4.5	(0.4)	<del>XXX</del>
	Employed	12,380	12,670	12,510	12,400	12,150	(230)	(1.9%)
<b>Sharkey</b>	Civilian Labor Force	1,730	1,720	1,620	1,610	1,610	(120)	(6.9%)
	Unemployed	170	150	130	120	140	(30)	(17.6%)
	Unemployment Rate	9.8	8.7	8.0	7.5	8.7	(1.1)	<del>XXX</del>
	Employed	1,560	1,570	1,490	1,490	1,470	(90)	(5.8%)
<b>Simpson</b>	Civilian Labor Force	10,910	10,950	10,960	10,730	10,770	(140)	(1.3%)
	Unemployed	640	590	540	500	560	(80)	(12.5%)
	Unemployment Rate	5.9	5.4	4.9	4.7	5.2	(0.7)	<del>XXX</del>
	Employed	10,270	10,360	10,420	10,230	10,210	(60)	(0.6%)
<b>Smith</b>	Civilian Labor Force	6,760	6,750	6,770	6,750	6,820	60	0.9%
	Unemployed	360	360	320	300	360	0	0.0%
	Unemployment Rate	5.3	5.3	4.7	4.4	5.3	(0.0)	<del>XXX</del>
	Employed	6,400	6,390	6,450	6,450	6,460	60	0.9%
<b>Stone</b>	Civilian Labor Force	6,420	6,510	6,580	6,710	6,880	460	7.2%
	Unemployed	480	440	400	390	450	(30)	(6.3%)
	Unemployment Rate	7.5	6.8	6.1	5.8	6.5	(0.9)	<del>XXX</del>
	Employed	5,940	6,070	6,180	6,320	6,430	490	8.2%
<b>Sunflower</b>	Civilian Labor Force	8,490	8,350	7,970	7,780	7,740	(750)	(8.8%)
	Unemployed	890	770	660	620	690	(200)	(22.5%)
	Unemployment Rate	10.5	9.2	8.3	8.0	8.9	(1.6)	<del>XXX</del>
	Employed	7,600	7,580	7,310	7,160	7,050	(550)	(7.2%)
<b>Tallahatchie</b>	Civilian Labor Force	5,820	5,750	5,480	5,260	5,280	(540)	(9.3%)
	Unemployed	440	390	290	280	310	(130)	(29.5%)
	Unemployment Rate	7.6	6.8	5.3	5.3	5.9	(1.7)	<del>XXX</del>
	Employed	5,380	5,360	5,190	4,980	4,970	(410)	(7.6%)
<b>Tate</b>	Civilian Labor Force	12,020	12,100	12,120	12,260	12,400	380	3.2%
	Unemployed	850	710	620	610	700	(150)	(17.6%)
	Unemployment Rate	7.1	5.9	5.1	5.0	5.6	(1.4)	<del>XXX</del>
	Employed	11,170	11,390	11,500	11,650	11,700	530	4.7%
<b>Tippah</b>	Civilian Labor Force	9,450	9,410	9,480	9,440	9,440	(10)	(0.1%)
	Unemployed	600	520	420	410	480	(120)	(20.0%)
	Unemployment Rate	6.3	5.5	4.4	4.3	5.1	(1.3)	<del>XXX</del>
	Employed	8,850	8,890	9,060	9,030	8,960	110	1.2%
<b>Tishomingo</b>	Civilian Labor Force	8,020	8,260	8,360	8,500	8,630	610	7.6%
	Unemployed	510	450	410	390	440	(70)	(13.7%)
	Unemployment Rate	6.4	5.4	4.9	4.6	5.1	(1.3)	<del>XXX</del>
	Employed	7,510	7,810	7,950	8,110	8,190	680	9.1%
<b>Tunica</b>	Civilian Labor Force	4,660	4,620	4,470	4,400	4,460	(200)	(4.3%)
	Unemployed	430	330	270	240	280	(150)	(34.9%)
	Unemployment Rate	9.2	7.1	6.0	5.5	6.3	(2.9)	<del>XXX</del>
	Employed	4,230	4,290	4,200	4,160	4,180	(50)	(1.2%)

SOURCE: MS Department of Employment Security, Labor Market Information Department in cooperation with U.S. Department of Labor, Bureau of Labor Statistics

# CIVILIAN LABOR FORCE

Annual Averages

							2015 TO 2019	
		2015	2016	2017	2018	2019	NET CHG	PCT CHG
<b>Union</b>	Civilian Labor Force	13,230	13,680	14,010	14,020	14,220	990	7.5%
	Unemployed	670	600	510	500	590	(80)	(11.9%)
	Unemployment Rate	5.1	4.4	3.6	3.6	4.1	(0.9)	<del>XXX</del>
	Employed	12,560	13,080	13,500	13,520	13,630	1,070	8.5%
<b>Walthall</b>	Civilian Labor Force	5,150	5,050	5,070	5,050	4,940	(210)	(4.1%)
	Unemployed	410	390	340	330	360	(50)	(12.2%)
	Unemployment Rate	8.0	7.7	6.7	6.5	7.3	(0.7)	<del>XXX</del>
	Employed	4,740	4,660	4,730	4,720	4,580	(160)	(3.4%)
<b>Warren</b>	Civilian Labor Force	20,910	20,830	20,890	20,460	20,340	(570)	(2.7%)
	Unemployed	1,390	1,310	1,180	1,120	1,230	(160)	(11.5%)
	Unemployment Rate	6.6	6.3	5.6	5.5	6.0	(0.6)	<del>XXX</del>
	Employed	19,520	19,520	19,710	19,340	19,110	(410)	(2.1%)
<b>Washington</b>	Civilian Labor Force	18,060	17,790	17,780	17,240	16,980	(1,080)	(6.0%)
	Unemployed	1,850	1,600	1,270	1,180	1,280	(570)	(30.8%)
	Unemployment Rate	10.2	9.0	7.1	6.8	7.5	(2.7)	<del>XXX</del>
	Employed	16,210	16,190	16,510	16,060	15,700	(510)	(3.1%)
<b>Wayne</b>	Civilian Labor Force	7,630	7,550	7,400	7,310	7,440	(190)	(2.5%)
	Unemployed	600	550	470	400	450	(150)	(25.0%)
	Unemployment Rate	7.9	7.3	6.4	5.5	6.0	(1.8)	<del>XXX</del>
	Employed	7,030	7,000	6,930	6,910	6,990	(40)	(0.6%)
<b>Webster</b>	Civilian Labor Force	3,940	3,910	3,890	3,910	3,990	50	1.3%
	Unemployed	280	240	210	200	230	(50)	(17.9%)
	Unemployment Rate	7.1	6.1	5.4	5.1	5.8	(1.3)	<del>XXX</del>
	Employed	3,660	3,670	3,680	3,710	3,760	100	2.7%
<b>Wilkinson</b>	Civilian Labor Force	2,880	2,840	2,830	2,770	2,820	(60)	(2.1%)
	Unemployed	300	290	250	240	290	(10)	(3.3%)
	Unemployment Rate	10.4	10.2	8.8	8.7	10.3	(0.1)	<del>XXX</del>
	Employed	2,580	2,550	2,580	2,530	2,530	(50)	(1.9%)
<b>Winston</b>	Civilian Labor Force	7,090	7,110	7,230	7,300	7,420	330	4.7%
	Unemployed	580	500	440	420	450	(130)	(22.4%)
	Unemployment Rate	8.2	7.0	6.1	5.8	6.1	(2.1)	<del>XXX</del>
	Employed	6,510	6,610	6,790	6,880	6,970	460	7.1%
<b>Yalobusha</b>	Civilian Labor Force	4,930	4,900	5,090	5,110	4,990	60	1.2%
	Unemployed	350	310	280	250	290	(60)	(17.1%)
	Unemployment Rate	7.1	6.3	5.5	4.9	5.8	(1.3)	<del>XXX</del>
	Employed	4,580	4,590	4,810	4,860	4,700	120	2.6%
<b>Yazoo</b>	Civilian Labor Force	9,210	9,260	9,110	9,360	9,430	220	2.4%
	Unemployed	750	680	560	530	600	(150)	(20.0%)
	Unemployment Rate	8.1	7.3	6.1	5.7	6.4	(1.8)	<del>XXX</del>
	Employed	8,460	8,580	8,550	8,830	8,830	370	4.4%

SOURCE: MS Department of Employment Security, Labor Market Information Department in cooperation with U.S. Department of Labor, Bureau of Labor Statistics

## COMPARATIVE LABOR FORCE DATA

Annual Averages

	2015	2016	2017	2018	2019	2015 TO 2019	
						NET CHG	PCT CHG
<b>UNITED STATES</b>							
Civilian Labor Force	157,130,000	159,187,000	160,320,000	162,075,000	163,539,000	6,409,000	4.1%
Unemployed	8,296,000	7,751,000	6,982,000	6,314,000	6,001,000	(2,295,000)	(27.7%)
Unemployment Rate	5.3%	4.9%	4.4%	3.9%	3.7%	(1.6)	N/A
Employed	148,834,000	151,436,000	153,337,000	155,761,000	157,538,000	8,704,000	5.8%
<b>MISSISSIPPI</b>							
Civilian Labor Force	1,265,300	1,279,500	1,277,700	1,269,200	1,276,100	10,800	0.9%
Unemployed	81,000	74,300	65,100	61,500	69,200	(11,800)	(14.6%)
Unemployment Rate	6.4%	5.8%	5.1%	4.8%	5.4%	(1.0)	N/A
Employed	1,184,300	1,205,200	1,212,600	1,207,700	1,206,900	22,600	1.9%
<b>GULFPORT-BILOXI-PACSAGOULA METROPOLITAN STATISTICAL AREA</b>							
Civilian Labor Force	163,470	164,950	163,610	162,750	163,850	380	0.2%
Unemployed	10,420	9,810	8,710	8,250	9,050	(1,370)	(13.1%)
Rate	6.4%	5.9%	5.3%	5.1%	5.5%	(0.0)	XXX
Employed	153,050	155,140	154,900	154,500	154,800	1,750	1.1%
<b>HATTIESBURG METROPOLITAN STATISTICAL AREA</b>							
Civilian Labor Force	66,130	67,440	68,080	67,980	68,300	2,170	3.3%
Unemployed	3,790	3,560	3,060	2,880	3,280	(510)	(13.5%)
Rate	5.7%	5.3%	4.5%	4.2%	4.8%	(0.0)	XXX
Employed	62,340	63,880	65,020	65,100	65,020	2,680	4.3%
<b>JACKSON METROPOLITAN STATISTICAL AREA</b>							
Civilian Labor Force	265,530	270,150	270,240	267,370	268,120	2,590	1.0%
Unemployed	14,150	13,240	11,840	11,350	12,850	(1,300)	(9.2%)
Rate	5.3%	4.9%	4.4%	4.2%	4.8%	(0.0)	XXX
Employed	251,380	256,910	258,400	256,020	255,270	3,890	1.5%
<b>DELTA WORKFORCE DEVELOPMENT AREA</b>							
Civilian Labor Force	100,740	99,390	96,500	93,860	93,400	(7,340)	(7.3%)
Unemployed	9,760	8,420	6,960	6,390	7,050	(2,710)	(27.8%)
Unemployment Rate	9.7%	8.5%	7.2%	6.8%	7.5%	(2.2)	N/A
Employed	90,980	90,970	89,530	87,480	86,350	(4,630)	(5.1%)
<b>MISSISSIPPI PARTNERSHIP WORKFORCE DEVELOPMENT AREA</b>							
Civilian Labor Force	388,890	397,340	399,770	400,790	404,470	15,580	4.0%
Unemployed	23,620	20,990	18,210	17,590	20,160	(3,460)	(14.6%)
Unemployment Rate	6.1%	5.3%	4.6%	4.4%	5.0%	(1.1)	N/A
Employed	365,270	376,350	381,560	383,210	384,310	19,040	5.2%
<b>SOUTHCENTRAL MISSISSIPPI WORKS WORKFORCE DEVELOPMENT AREA</b>							
Civilian Labor Force	352,480	356,670	356,530	352,790	353,540	1,060	0.3%
Unemployed	20,740	19,530	17,490	16,560	18,740	(2,000)	(9.6%)
Unemployment Rate	5.9%	5.5%	4.9%	4.7%	5.3%	(0.6)	N/A
Employed	331,740	337,140	339,050	336,230	334,800	3,060	0.9%
<b>TWIN DISTRICTS WORKFORCE DEVELOPMENT AREA</b>							
Civilian Labor Force	423,230	426,140	424,890	421,770	424,790	1,560	0.4%
Unemployed	26,910	25,360	22,430	20,970	23,320	(3,590)	(13.3%)
Unemployment Rate	6.4%	6.0%	5.3%	5.0%	5.5%	(0.9)	N/A
Employed	396,330	400,780	402,460	400,800	401,470	5,140	1.3%

SOURCE: MS Department of Employment Security, Labor Market Information Department in cooperation with U.S. Department of Labor, Bureau of Labor Statistics

# UNEMPLOYMENT INSURANCE BENEFITS



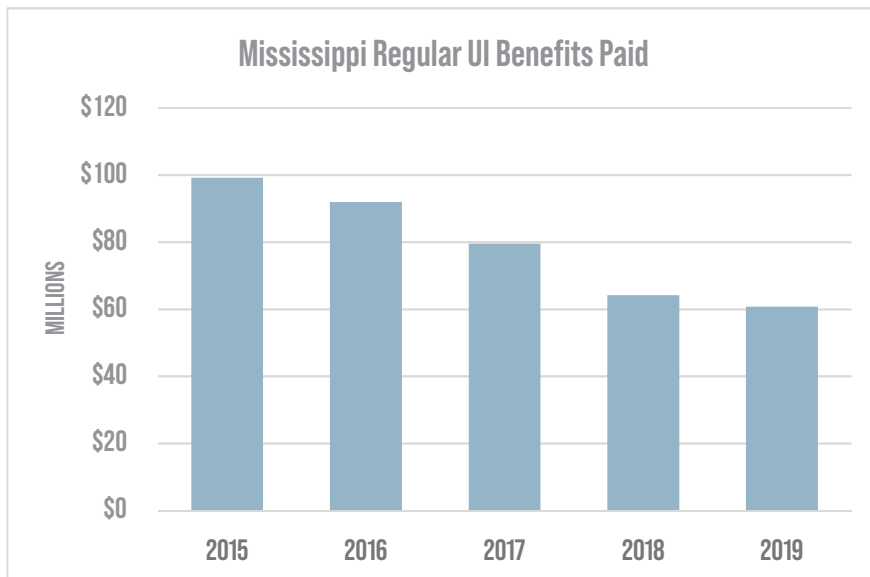
Regular unemployment benefits paid in the state, as a whole, shows a whopping 38.7% decrease since 2015. Clay County was the lone county with an increase over the same period, showing a net increase of \$17,226 in benefits paid—a 1.5% change. The remaining eighty-one counties showed a decrease for unemployment benefits paid over the same period. Jones County had a

percent decrease of 65.8%, the highest rate decrease over the five-year period. Jasper County had the second highest percent decrease with 64.6%. Copiah County, with a decrease of 6.5%, had the lowest decrease over the period.

The Metropolitan Statistical Areas all showed a decrease in benefits paid from 2015 to 2019 but only Gulfport-Biloxi-Pascagoula and Hattiesburg MSAs have shown a continual decrease each year since 2015. Jackson MSA had a slight increase from 2016 to 2017 but has shown significant decreases since then.

All four Workforce Development Areas showed a decrease in payments over the five-year period. Twin Districts WDA registered the highest percent decrease from 2015 to 2019 of 47%, a decrease of over \$14 million paid over the period. Delta WDA had the lowest decrease in net change from 2015 to 2019 of the four WDAs with a little over \$5 million or 32.6%.

*Benefits paid statewide decreased a whopping 38.7% since 2015*







## REGULAR UNEMPLOYMENT INSURANCE BENEFITS PAID

	2015	2016	2017	2018	2019	2015 TO 2019	
						NET CHG	PCT CHG
MISSISSIPPI	\$99,170,123	\$91,958,118	\$79,516,011	\$64,173,259	\$60,774,621	(\$38,395,502)	(38.7%)
Adams	\$1,256,225	\$1,445,940	\$888,237	\$741,773	\$786,245	(\$469,980)	(37.4%)
Alcorn	\$744,848	\$752,775	\$614,164	\$461,011	\$498,575	(\$246,273)	(33.1%)
Amite	\$342,920	\$282,958	\$244,889	\$213,299	\$191,800	(\$151,120)	(44.1%)
Attala	\$641,855	\$514,913	\$526,808	\$364,919	\$326,759	(\$315,096)	(49.1%)
Benton	\$216,419	\$178,608	\$161,006	\$187,781	\$117,600	(\$98,819)	(45.7%)
Bolivar	\$1,471,034	\$1,568,534	\$1,469,419	\$1,242,823	\$1,322,071	(\$148,963)	(10.1%)
Calhoun	\$377,066	\$304,123	\$242,187	\$218,409	\$266,787	(\$110,279)	(29.2%)
Carroll	\$278,989	\$284,908	\$192,713	\$172,713	\$195,488	(\$83,501)	(29.9%)
Chickasaw	\$723,263	\$627,395	\$428,725	\$423,713	\$427,002	(\$296,261)	(41.0%)
Choctaw	\$245,805	\$211,299	\$188,984	\$185,715	\$188,179	(\$57,626)	(23.4%)
Claiborne	\$589,188	\$516,131	\$427,477	\$372,215	\$429,343	(\$159,845)	(27.1%)
Clarke	\$609,015	\$451,876	\$437,213	\$263,929	\$250,973	(\$358,042)	(58.8%)
Clay	\$1,187,407	\$1,122,090	\$939,306	\$729,296	\$1,204,633	\$17,226	1.5%
Coahoma	\$1,619,356	\$1,413,426	\$1,141,739	\$1,062,538	\$988,605	(\$630,751)	(39.0%)
Copiah	\$832,729	\$775,710	\$657,935	\$691,060	\$778,887	(\$53,842)	(6.5%)
Covington	\$483,603	\$422,953	\$435,586	\$278,327	\$221,756	(\$261,847)	(54.1%)
DeSoto	\$2,232,902	\$1,780,991	\$1,690,129	\$1,555,247	\$1,628,154	(\$604,748)	(27.1%)
Forrest	\$2,153,037	\$2,140,945	\$1,655,094	\$1,320,192	\$1,278,157	(\$874,880)	(40.6%)
Franklin	\$198,016	\$170,739	\$186,143	\$140,302	\$133,369	(\$64,647)	(32.6%)
George	\$766,058	\$763,394	\$585,363	\$500,207	\$412,681	(\$353,377)	(46.1%)
Greene	\$357,523	\$350,814	\$312,620	\$170,804	\$231,106	(\$126,417)	(35.4%)
Grenada	\$626,490	\$540,353	\$540,302	\$404,498	\$461,018	(\$165,472)	(26.4%)
Hancock	\$1,003,283	\$1,074,124	\$814,536	\$585,695	\$420,324	(\$582,959)	(58.1%)
Harrison	\$5,953,428	\$5,448,198	\$4,543,221	\$3,557,860	\$3,361,423	(\$2,592,005)	(43.5%)
Hinds	\$7,521,684	\$6,973,435	\$7,461,070	\$5,986,223	\$5,273,784	(\$2,247,900)	(29.9%)
Holmes	\$1,337,406	\$1,291,487	\$996,460	\$921,644	\$965,631	(\$371,775)	(27.8%)
Humphreys	\$586,488	\$505,721	\$385,229	\$318,606	\$354,018	(\$232,470)	(39.6%)
Issaquena	\$108,656	\$79,839	\$81,427	\$52,439	\$64,296	(\$44,360)	(40.8%)
Itawamba	\$546,194	\$459,042	\$333,575	\$279,796	\$280,303	(\$265,891)	(48.7%)
Jackson	\$5,726,296	\$5,301,581	\$4,252,409	\$3,904,318	\$2,981,053	(\$2,745,243)	(47.9%)
Jasper	\$745,330	\$726,218	\$412,371	\$257,581	\$263,978	(\$481,352)	(64.6%)
Jefferson	\$483,046	\$518,959	\$338,832	\$320,059	\$286,153	(\$196,893)	(40.8%)
Jefferson Davis	\$527,470	\$606,358	\$400,350	\$426,977	\$297,510	(\$229,960)	(43.6%)
Jones	\$1,782,902	\$1,962,962	\$1,038,036	\$758,484	\$610,368	(\$1,172,534)	(65.8%)
Kemper	\$477,902	\$412,679	\$415,633	\$316,488	\$239,084	(\$238,818)	(50.0%)
Lafayette	\$991,241	\$937,180	\$918,957	\$646,920	\$502,251	(\$488,990)	(49.3%)
Lamar	\$1,424,151	\$1,219,319	\$884,005	\$837,644	\$756,249	(\$667,902)	(46.9%)
Lauderdale	\$2,351,525	\$2,196,884	\$2,483,655	\$1,647,916	\$1,429,706	(\$921,819)	(39.2%)
Lawrence	\$333,274	\$321,316	\$268,742	\$195,222	\$204,982	(\$128,292)	(38.5%)
Leake	\$470,263	\$588,027	\$518,024	\$310,318	\$395,434	(\$74,829)	(15.9%)
Lee	\$2,431,694	\$2,422,865	\$1,811,577	\$1,635,622	\$1,589,804	(\$841,890)	(34.6%)
Leflore	\$2,019,320	\$1,604,463	\$1,350,341	\$1,184,490	\$1,123,156	(\$896,164)	(44.4%)
Lincoln	\$801,419	\$660,848	\$617,317	\$445,006	\$589,692	(\$211,727)	(26.4%)
Lowndes	\$2,012,056	\$2,055,907	\$1,904,796	\$1,365,888	\$1,272,850	(\$739,206)	(36.7%)
Madison	\$2,584,245	\$2,599,810	\$2,557,424	\$1,888,735	\$1,974,547	(\$609,698)	(23.6%)
Marion	\$772,467	\$731,465	\$531,947	\$570,255	\$422,720	(\$349,747)	(45.3%)

Note: County data will not add to state totals because out-of-state amounts are included in the state totals.

## REGULAR UNEMPLOYMENT INSURANCE BENEFITS PAID

	2015	2016	2017	2018	2019	2015 TO 2019	
						NET CHG	PCT CHG
Marshall	\$926,886	\$797,524	\$650,746	\$552,909	\$479,593	(\$447,293)	(48.3%)
Monroe	\$1,450,223	\$1,410,731	\$1,017,983	\$931,780	\$982,845	(\$467,378)	(32.2%)
Montgomery	\$492,775	\$367,681	\$238,480	\$272,925	\$215,494	(\$277,281)	(56.3%)
Neshoba	\$548,548	\$544,833	\$418,267	\$346,587	\$392,459	(\$156,089)	(28.5%)
Newton	\$521,211	\$536,496	\$477,218	\$271,711	\$306,229	(\$214,982)	(41.2%)
Noxubee	\$487,965	\$438,338	\$438,328	\$334,207	\$341,592	(\$146,373)	(30.0%)
Oktibbeha	\$1,222,228	\$1,046,115	\$946,857	\$828,778	\$901,576	(\$320,652)	(26.2%)
Panola	\$1,501,265	\$1,308,859	\$1,699,750	\$938,820	\$838,896	(\$662,369)	(44.1%)
Pearl River	\$905,136	\$1,159,998	\$854,017	\$542,745	\$462,180	(\$442,956)	(48.9%)
Perry	\$352,189	\$234,784	\$175,025	\$144,170	\$141,246	(\$210,943)	(59.9%)
Pike	\$937,018	\$893,800	\$748,619	\$670,256	\$663,117	(\$273,901)	(29.2%)
Pontotoc	\$783,412	\$597,628	\$434,857	\$448,222	\$447,538	(\$335,874)	(42.9%)
Prentiss	\$720,071	\$709,334	\$520,109	\$461,362	\$431,332	(\$288,739)	(40.1%)
Quitman	\$507,473	\$472,902	\$458,528	\$288,299	\$274,609	(\$232,864)	(45.9%)
Rankin	\$2,505,392	\$2,648,813	\$2,763,289	\$1,993,285	\$1,782,779	(\$722,613)	(28.8%)
Scott	\$593,837	\$653,895	\$543,600	\$386,259	\$367,491	(\$226,346)	(38.1%)
Sharkey	\$271,707	\$266,955	\$240,549	\$226,278	\$218,065	(\$53,642)	(19.7%)
Simpson	\$683,010	\$514,578	\$480,527	\$367,782	\$342,364	(\$340,646)	(49.9%)
Smith	\$342,229	\$367,121	\$302,041	\$194,844	\$159,446	(\$182,783)	(53.4%)
Stone	\$407,043	\$437,434	\$289,353	\$238,423	\$234,138	(\$172,905)	(42.5%)
Sunflower	\$1,509,842	\$1,440,982	\$1,275,814	\$1,151,237	\$1,179,041	(\$330,801)	(21.9%)
Tallahatchie	\$855,659	\$690,727	\$565,063	\$551,841	\$489,558	(\$366,101)	(42.8%)
Tate	\$778,309	\$560,980	\$589,256	\$472,007	\$504,166	(\$274,143)	(35.2%)
Tippah	\$619,334	\$517,782	\$346,918	\$353,671	\$368,350	(\$250,984)	(40.5%)
Tishomingo	\$529,011	\$438,156	\$432,678	\$324,026	\$354,673	(\$174,338)	(33.0%)
Tunica	\$700,890	\$522,921	\$493,648	\$386,262	\$420,475	(\$280,415)	(40.0%)
Union	\$651,585	\$559,079	\$392,747	\$405,184	\$463,423	(\$188,162)	(28.9%)
Walthall	\$403,154	\$362,522	\$262,904	\$377,840	\$312,078	(\$91,076)	(22.6%)
Warren	\$1,764,085	\$1,779,739	\$1,687,262	\$1,479,092	\$1,199,781	(\$564,304)	(32.0%)
Washington	\$2,576,982	\$2,300,664	\$2,220,878	\$2,011,363	\$1,901,395	(\$675,587)	(26.2%)
Wayne	\$782,080	\$757,329	\$454,095	\$333,984	\$298,966	(\$483,114)	(61.8%)
Webster	\$354,521	\$231,958	\$188,468	\$149,849	\$148,831	(\$205,690)	(58.0%)
Wilkinson	\$226,371	\$234,420	\$209,758	\$197,553	\$164,122	(\$62,249)	(27.5%)
Winston	\$802,745	\$634,735	\$600,759	\$438,492	\$379,832	(\$422,913)	(52.7%)
Yalobusha	\$380,818	\$368,580	\$415,155	\$296,328	\$303,861	(\$76,957)	(20.2%)
Yazoo	\$1,153,841	\$1,067,786	\$825,821	\$631,084	\$705,369	(\$448,472)	(38.9%)

## METROPOLITAN STATISTICAL AREAS

G-B-P	\$12,683,007	\$11,823,903	\$9,610,166	\$8,047,873	\$6,762,800	(\$5,920,207)	(46.7%)
HATTIESBURG	\$3,929,377	\$3,595,048	\$2,714,124	\$2,302,006	\$2,175,652	(\$1,753,725)	(44.6%)
JACKSON	\$15,280,901	\$14,580,132	\$14,746,066	\$11,558,169	\$10,857,730	(\$4,423,171)	(28.9%)

## WORKFORCE DEVELOPMENT AREAS

DELTA	\$15,345,067	\$13,752,388	\$12,571,558	\$10,509,353	\$10,335,304	(\$5,009,763)	(32.6%)
MS PARTNERSHIP	\$23,177,123	\$20,586,162	\$17,513,857	\$14,728,555	\$15,087,021	(\$8,090,102)	(34.9%)
SC MS WORKS	\$22,615,617	\$21,767,504	\$20,626,246	\$16,710,786	\$15,818,412	(\$6,797,205)	(30.1%)
TWIN DISTRICTS	\$30,056,526	\$29,089,687	\$23,233,679	\$18,165,718	\$15,934,677	(\$14,121,849)	(47.0%)

Note: County data will not add to state totals because out-of-state amounts are included in the state totals.



# INDUSTRY TRENDS

Employment covered under the Mississippi Employment Security law, tallied by place of work, for all industries posted a gain of 20,969 from 2015 to 2019. Two industry supersectors in the state that experienced the highest job gains overall during the period were Education & Health Services and Leisure & Hospitality, both gaining over 7,000 jobs each. Within the Education and Health Services supersector, the Health Care and Social Assistance sector posted an increase of 9,647 jobs. The Accommodation and Food Service sector within Leisure and Hospitality had a gain of 8,603. The sector Transportation and Warehousing had the state's third largest job increase with 8,146, but the loss of 2,372 jobs in Retail Trade, caused the overall Trade, Transportation, and Utilities supersector gain of 5,659 to rank as third highest in the state over the five-year period. It is good to note that the Manufacturing sector rose by 5,054 an increase of 3.6%. The sectors posting overall percentage declines over 10% were Mining (24.3%); Information (20.2%) and Arts, Entertainment & Recreation (12.5%).

Declines in covered employment in the Delta WDA continue to reflect the decreases in population and labor force. The only sector showing growth was Manufacturing, with an increase of 5.2%, a gain of 468 jobs. Overall, the area posted a net loss of 5,225 jobs from 2015 to 2019. The Trade, Transportation, and Utilities and Leisure and Hospitality supersectors had the highest drops with 1,200 and 1,574 jobs lost respectively.

MISSISSIPPI HAD  
**9,647**  
 MORE JOBS IN  
*Health Care & Social Assistance*

Covered employment posted a large gain of 21,810 jobs in the Mississippi Partnership Workforce Development Area, over the same five-year period. While two supersectors posted small losses, Natural Resources & Mining lost 0.1%, and Information lost 1.7%, both totaled only 56 jobs lost. The supersector with the largest employment increase was Trade, Transportation

and Utilities, which added 7,149 jobs. Education and Health Services added 3,977 jobs. Other supersectors with gains were Manufacturing (2,871 jobs), Professional and Business Services (2,857 jobs) and Leisure and Hospitality (2,619 jobs) in the same period.

Overall, Southcentral Mississippi Works WDA increased their covered employment with 3,904 jobs added from 2015 to 2019. Education and Health Services led the area with 2,122 jobs gained. Manufacturing; Trade, Transportation and Utilities; Professional and Business Services; and Leisure and Hospitality had increases of over 1,000 jobs each but a significant loss of 2,170 jobs occurred in Information.

Twin Districts WDA managed the second highest increase overall with 6,072 more jobs over the five years. The biggest decreases for the area occurred in Construction and Natural Resources & Mining with losses totaling 2,080 jobs. Leisure and Hospitality continues to thrive with 4,399 new jobs, which reflects a gain of 8.7%, and Education and Health Services grew by 2,325 jobs.





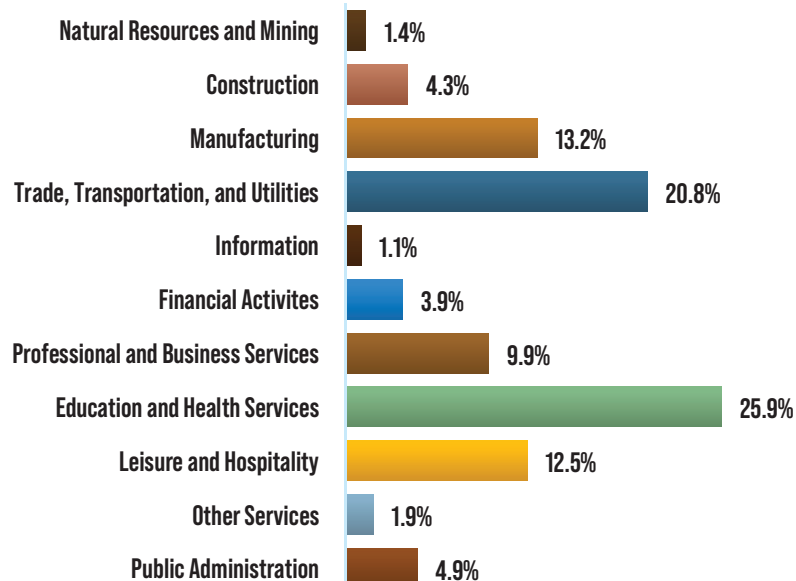
## COVERED EMPLOYMENT

Data based on place of work

MISSISSIPPI	2015 Avg Mo	2016 Avg Mo	2017 Avg Mo	2018 Avg Mo	2019 Avg Mo	2015 TO 2019	
						NET CHG	PCT CHG
<b>TOTAL ALL INDUSTRIES</b>	1,089,114	1,100,264	1,103,206	1,105,635	1,110,083	20,969	1.9%
<b>NATURAL RESOURCES &amp; MINING</b>	17,906	16,935	16,361	16,233	15,777	(2,129)	(11.9%)
Agriculture, Forestry, Fishing and Hunting	12,815	13,058	12,273	12,235	11,922	(893)	(7.0%)
Mining, Quarrying, and Oil and Gas Extraction	5,091	3,877	4,088	3,998	3,855	(1,236)	(24.3%)
<b>CONSTRUCTION</b>	49,211	47,793	46,733	47,187	47,735	(1,476)	(3.0%)
<b>MANUFACTURING</b>	141,847	143,263	144,136	144,926	146,901	5,054	3.6%
<b>TRADE, TRANSPORTATION, AND UTILITIES</b>	225,686	230,576	232,042	231,415	231,345	5,659	2.5%
Wholesale Trade	34,523	34,356	34,767	34,161	34,470	(53)	(0.2%)
Retail Trade	138,276	140,923	140,529	138,399	135,904	(2,372)	(1.7%)
Transportation & Warehousing	43,722	46,031	47,366	49,636	51,868	8,146	18.6%
Utilities	9,165	9,266	9,380	9,219	9,103	(62)	(0.7%)
<b>INFORMATION</b>	14,978	13,509	12,882	12,243	11,948	(3,030)	(20.2%)
<b>FINANCIAL ACTIVITIES</b>	43,574	43,759	43,701	43,620	43,799	225	0.5%
Finance & Insurance	31,299	31,449	31,354	31,287	31,396	97	0.3%
Real Estate and Rental & Leasing	12,275	12,310	12,347	12,333	12,403	128	1.0%
<b>PROFESSIONAL &amp; BUSINESS SERVICES</b>	105,931	108,985	108,783	110,848	109,529	3,598	3.4%
Professional, Scientific and Technical Services	31,383	31,321	31,669	31,890	31,957	574	1.8%
Management of Companies and Enterprises	10,601	11,044	11,011	11,482	11,225	624	5.9%
Administrative and Support and Waste Managem.	63,947	66,620	66,103	67,476	66,347	2,400	3.8%
<b>EDUCATION &amp; HEALTH SERVICES</b>	280,359	283,055	284,865	285,363	288,046	7,687	2.7%
Educational Services	111,606	111,739	110,637	109,727	109,646	(1,960)	(1.8%)
Health Care & Social Assistance	168,753	171,316	174,228	175,636	178,400	9,647	5.7%
<b>LEISURE &amp; HOSPITALITY</b>	131,989	136,065	137,489	137,690	139,067	7,078	5.4%
Arts, Entertainment & Recreation	12,220	12,298	10,523	10,495	10,695	(1,525)	(12.5%)
Accommodation & Food Services	119,769	123,767	126,966	127,195	128,372	8,603	7.2%
<b>OTHER SERVICES</b>	22,028	21,492	21,328	21,368	21,185	(843)	(3.8%)
<b>PUBLIC ADMINISTRATION</b>	55,606	54,834	54,887	54,743	54,753	(853)	(1.5%)

SOURCE: MS DEPARTMENT OF EMPLOYMENT SECURITY, LABOR MARKET INFORMATION DEPARTMENT IN COOPERATION WITH U.S. DEPARTMENT OF LABOR, BUREAU OF LABOR STATISTICS

## INDUSTRY DISTRIBUTION 2019



## COVERED EMPLOYMENT WORKFORCE DEVELOPMENT AREAS

Data based on place of work

DELTA WDA	2015 Avg Mo	2016 Avg Mo	2017 Avg Mo	2018 Avg Mo	2019 Avg Mo	2015 TO 2019	
						NET CHG	PCT CHG
TOTAL ALL INDUSTRIES	91,269	90,787	89,635	87,707	86,044	(5,225)	(5.7%)
Natural Resources & Mining	3,949	3,917	3,804	3,703	3,575	(374)	(9.5%)
Construction	2,757	2,847	2,765	2,676	2,629	(128)	(4.6%)
Manufacturing	9,059	8,970	9,108	9,068	9,527	468	5.2%
Trade, Transportation, and Utilities	17,895	17,816	17,558	17,059	16,695	(1,200)	(6.7%)
Information	786	829	772	695	663	(123)	(15.6%)
Financial Activities	3,145	3,066	2,994	2,935	2,928	(217)	(6.9%)
Professional & Business Services	5,699	5,895	5,877	5,700	4,862	(837)	(14.7%)
Education & Health Services	25,939	25,860	25,632	25,277	25,242	(697)	(2.7%)
Leisure & Hospitality	13,532	13,312	12,940	12,491	11,958	(1,574)	(11.6%)
Other Services	2,056	1,999	2,015	2,039	1,885	(171)	(8.3%)
Public Administration	6,451	6,277	6,170	6,065	6,080	(371)	(5.8%)
MISSISSIPPI PARTNERSHIP WDA	2015 Avg Mo	2016 Avg Mo	2017 Avg Mo	2018 Avg Mo	2019 Avg Mo	2015 TO 2019	
						NET CHG	PCT CHG
TOTAL ALL INDUSTRIES	297,932	308,998	312,251	316,374	319,742	21,810	7.3%
Natural Resources & Mining	2,869	2,977	2,931	2,969	2,867	(2)	(0.1%)
Construction	10,056	10,201	10,286	10,663	10,745	689	6.9%
Manufacturing	56,756	58,230	58,739	59,218	59,627	2,871	5.1%
Trade, Transportation, and Utilities	66,257	70,109	71,448	72,309	73,406	7,149	10.8%
Information	3,271	3,367	3,314	3,264	3,217	(54)	(1.7%)
Financial Activities	9,225	9,672	9,819	9,979	10,217	992	10.8%
Professional & Business Services	26,211	27,756	26,960	28,804	29,068	2,857	10.9%
Education & Health Services	74,151	75,882	76,800	77,234	78,128	3,977	5.4%
Leisure & Hospitality	32,836	34,225	35,188	35,094	35,455	2,619	8.0%
Other Services	5,109	5,303	5,350	5,328	5,414	305	6.0%
Public Administration	11,192	11,275	11,416	11,512	11,600	408	3.6%
SOUTHCENTRAL MS WORKS WDA	2015 Avg Mo	2016 Avg Mo	2017 Avg Mo	2018 Avg Mo	2019 Avg Mo	2015 TO 2019	
						NET CHG	PCT CHG
TOTAL ALL INDUSTRIES	317,606	321,041	321,865	320,934	321,510	3,904	1.2%
Natural Resources & Mining	4,387	4,027	3,739	3,720	3,525	(862)	(19.6%)
Construction	13,031	13,222	12,932	12,527	12,826	(205)	(1.6%)
Manufacturing	27,294	28,207	28,632	29,084	29,212	1,918	7.0%
Trade, Transportation, and Utilities	65,442	66,583	67,394	66,936	66,755	1,313	2.0%
Information	6,447	5,148	4,804	4,466	4,277	(2,170)	(33.7%)
Financial Activities	16,703	17,083	16,790	16,783	16,720	17	0.1%
Professional & Business Services	32,828	34,728	34,454	34,660	33,858	1,030	3.1%
Education & Health Services	90,124	90,927	91,328	91,258	92,246	2,122	2.4%
Leisure & Hospitality	34,415	34,697	35,229	35,306	36,046	1,631	4.7%
Other Services	7,218	7,231	7,005	6,906	6,925	(293)	(4.1%)
Public Administration	19,718	19,187	19,558	19,289	19,120	(598)	(3.0%)
TWIN DISTRICTS WDA	2015 Avg Mo	2016 Avg Mo	2017 Avg Mo	2018 Avg Mo	2019 Avg Mo	2015 TO 2019	
						NET CHG	PCT CHG
TOTAL ALL INDUSTRIES	343,669	346,617	346,958	347,712	349,741	6,072	1.8%
Natural Resources & Mining	6,240	5,644	5,266	5,241	5,207	(1,033)	(16.6%)
Construction	18,419	17,502	16,573	17,488	17,372	(1,047)	(5.7%)
Manufacturing	48,340	47,814	47,633	47,536	48,485	145	0.3%
Trade, Transportation, and Utilities	66,201	67,861	67,733	67,065	66,816	615	0.9%
Information	3,643	3,535	3,336	3,054	2,999	(644)	(17.7%)
Financial Activities	12,384	12,489	12,507	12,279	12,335	(49)	(0.4%)
Professional & Business Services	27,609	27,815	28,572	28,355	28,453	844	3.1%
Education & Health Services	87,669	88,083	88,745	89,195	89,994	2,325	2.7%
Leisure & Hospitality	50,659	53,346	53,694	54,290	55,058	4,399	8.7%
Other Services	6,286	6,398	6,397	6,587	6,338	52	0.8%
Public Administration	16,220	16,132	16,503	16,621	16,684	464	2.9%

SOURCE: MS DEPARTMENT OF EMPLOYMENT SECURITY, LABOR MARKET INFORMATION DEPARTMENT IN COOPERATION WITH U.S. DEPARTMENT OF LABOR, BUREAU OF LABOR STATISTICS

**TOTAL COVERED EMPLOYMENT** (Data based on place of work)

	2015	2016	2017	2018	2019	2015 TO 2019	
	Average Monthly	Average Monthly	Average Monthly	Average Monthly	Average Monthly	NET CHG	PCT CHG
MISSISSIPPI	1,089,114	1,100,264	1,103,206	1,105,635	1,110,083	20,969	1.9%
Adams	10,586	10,370	10,356	10,530	10,412	(174)	(1.6%)
Alcorn	13,743	13,853	14,015	14,164	14,206	463	3.4%
Amite	1,719	1,743	1,737	1,781	1,874	155	9.0%
Attala	4,423	4,515	4,489	4,497	4,488	65	1.5%
Benton	863	926	941	916	918	55	6.4%
Bolivar	11,697	11,790	11,451	11,016	10,778	(919)	(7.9%)
Calhoun	3,164	3,215	3,192	3,175	3,131	(33)	(1.0%)
Carroll	1,101	1,103	1,135	1,127	1,130	29	2.6%
Chickasaw	5,397	5,304	5,377	5,372	5,204	(193)	(3.6%)
Choctaw	2,090	2,092	2,049	2,160	2,201	111	5.3%
Claiborne	3,416	3,379	3,406	3,431	3,470	54	1.6%
Clarke	2,928	2,889	2,845	2,863	2,910	(18)	(0.6%)
Clay	5,201	5,276	5,201	5,265	5,290	89	1.7%
Coahoma	8,139	8,016	7,804	7,612	7,545	(594)	(7.3%)
Copiah	6,956	7,115	7,068	6,899	6,710	(246)	(3.5%)
Covington	5,047	5,243	5,360	5,386	5,456	409	8.1%
DeSoto	53,841	58,275	60,161	62,307	63,642	9,801	18.2%
Forrest	37,415	38,182	39,202	39,839	39,866	2,451	6.6%
Franklin	1,633	1,565	1,532	1,503	1,495	(138)	(8.5%)
George	4,875	4,786	4,867	4,890	4,868	(7)	(0.1%)
Greene	1,946	1,905	1,930	1,909	1,909	(37)	(1.9%)
Grenada	10,186	10,421	10,432	10,443	10,330	144	1.4%
Hancock	11,205	11,101	11,149	11,360	11,619	414	3.7%
Harrison	77,584	79,237	79,742	79,980	80,821	3,237	4.2%
Hinds	115,658	116,498	116,814	115,680	115,385	(273)	(0.2%)
Holmes	3,664	3,557	3,479	3,417	3,317	(347)	(9.5%)
Humphreys	2,262	2,193	2,205	2,253	2,258	(4)	(0.2%)
Issaquena	196	195	200	187	193	(3)	(1.5%)
Itawamba	6,312	6,243	6,165	6,027	5,905	(407)	(6.4%)
Jackson	48,349	48,397	47,501	47,464	47,101	(1,248)	(2.6%)
Jasper	3,799	3,765	3,886	3,960	4,056	257	6.8%
Jefferson	1,231	1,184	1,058	1,017	978	(253)	(20.6%)
Jefferson Davis	1,592	1,619	1,660	1,573	1,578	(14)	(0.9%)
Jones	28,044	26,986	26,582	26,871	27,663	(381)	(1.4%)
Kemper	2,621	2,770	2,340	2,184	1,961	(660)	(25.2%)
Lafayette	21,005	22,537	23,279	24,003	24,038	3,033	14.4%
Lamar	18,428	18,903	19,120	19,126	19,413	985	5.3%
Lauderdale	32,518	32,776	32,824	32,085	32,021	(497)	(1.5%)
Lawrence	2,532	2,429	2,383	2,382	2,348	(184)	(7.3%)
Leake	4,967	4,805	4,752	5,064	5,176	209	4.2%
Lee	51,254	53,390	53,530	53,282	54,260	3,006	5.9%
Leflore	13,997	14,208	14,603	14,442	14,476	479	3.4%
Lincoln	11,554	11,752	11,891	12,084	12,005	451	3.9%
Lowndes	23,802	24,360	24,165	24,229	24,627	825	3.5%
Madison	52,187	54,719	55,237	55,190	55,445	3,258	6.2%
Marion	7,672	7,982	7,979	7,878	7,798	126	1.6%



## LOCAL AREA HIGHLIGHTS - COVERED EMPLOYMENT

	RANK		COMMENTS
	NET CHG	PCT CHG	
MISSISSIPPI	N/A	N/A	
Adams	58	57	Decreases in Leisure & Hospitality and Nat. Resources & Mining; Increase in Education & Health Svcs.
Alcorn	17	29	Increases in Education & Health Services and Trade, Transportation & Utilities
Amite	28	8	Steady growth; Increases in Construction and Manufacturing; Decline in Professional & Business Svcs.
Attala	34	37	Mostly stable; Increase in Financial Activities; Decrease in Natural Resources & Mining
Benton	35	13	Fairly unchanged; Increases in Construction and Education & Health Services
Bolivar	78	74	Significant decreases in most sectors led by Trade, Transportation & Utilities and Manufacturing
Calhoun	48	50	Decreases in most sectors; Increases in Leisure & Hospitality and Natural Resources & Mining
Carroll	40	31	Slight increases in most sectors with drops in Natural Resources & Mining and Education & Health Svcs.
Chickasaw	62	62	Large decrease in Manufacturing; Growth in Trade, Transp. & Utilities, Const. & Nat. Resources & Mining
Choctaw	31	19	Increase in Manufacturing, Education & Health Services and Trade, Transportation & Utilities
Claiborne	36	36	Significant decrease in Construction; Large increase in Trade, Transportation & Utilities
Clarke	46	47	Overall decline with increases in Construction, Leisure & Hospitality and Professional & Business Svcs.
Clay	33	34	Large increase in Manufacturing; Decreases in Leisure & Hospitality and Education & Health Services
Coahoma	75	73	Decreases in almost all sectors with scant growth in Construction
Copiah	67	61	Decreases in Trade, Transp. & Utilities and Professional & Business Services; Increase in Mfg.
Covington	22	10	Increases in almost all sectors; Good gains in Trade, Transportation & Utilities and Construction
DeSoto	1	2	Significant increases in all sectors led by Trade, Transportation & Utilities
Forrest	6	12	Increases in most sectors, highest being Leisure & Hospitality; Decreases in Information and Construction
Franklin	55	75	Decreases in most sectors
George	44	42	Decreases in Other Services and Professional & Business Services; Most growth Leisure & Hospitality
Greene	50	58	Decreases in Manufacturing and Public Administration; Increases in Construction and Leisure & Hospitality
Grenada	29	38	Fairly stable; Increase in Trade, Transportation & Utilities; Decrease in Professional & Business Services
Hancock	20	24	Large increases in Leisure & Hospitality and Prof. & Business Services
Harrison	3	22	Significant increase in Leisure & Hospitality; Decreases in Manufacturing and Information
Hinds	69	44	Notable decreases in almost all sectors except Manufacturing and Professional & Business Services
Holmes	70	77	Decreases in almost all sectors except Construction and Leisure & Hospitality
Humphreys	43	43	General decreases overall; Increase in Manufacturing
Issaquena	42	56	No significant changes; Decrease in Natural Resources & Mining
Itawamba	72	68	Large decreases in Manufacturing and Trade, Transportation & Utilities
Jackson	81	59	Large decreases in Construction, Manufacturing and Professional & Business Services
Jasper	24	11	Large Increases in Construction and Manufacturing
Jefferson	68	81	No gains in any sector
Jefferson Davis	45	49	Decrease in Education & Health Services; Increase in Manufacturing
Jones	71	52	Significant decrease in Natural Resources & Mining
Kemper	77	82	Decreases or no change all sectors except Manufacturing
Lafayette	4	3	Increases in all sectors except Information and Natural Resources & Mining
Lamar	10	18	Large increase in Education & Health Services; Decrease in Information
Lauderdale	74	55	Significant decrease in Manufacturing; Increases in Prof. & Business Svcs. and Leisure & Hospitality
Lawrence	61	72	Large decrease in Construction
Leake	26	21	Increase in Manufacturing; Decrease in Professional & Business Services
Lee	5	17	Large increases in most sectors with slight decrease in Information
Leflore	15	28	Decreases in most sectors but continuing large increase in Manufacturing
Lincoln	18	23	Increases in Manufacturing and Trade, Transportation & Utilities; Decrease in Leisure & Hospitality
Lowndes	12	27	Significant increases in Education & Health Services, Leisure & Hospitality and Construction
Madison	2	14	Large increases in most sectors but a very large decrease in Information
Marion	30	35	Overall increase led by Construction and Manufacturing but large decrease in Trade, Transp. & Utilities

**TOTAL COVERED EMPLOYMENT** (Data based on place of work)

	2015	2016	2017	2018	2019	2015 TO 2019	
	Average Monthly	Average Monthly	Average Monthly	Average Monthly	Average Monthly	NET CHG	PCT CHG
Marshall	6,035	6,263	6,561	7,067	7,565	1,530	25.4%
Monroe	9,569	9,682	9,564	9,557	9,606	37	0.4%
Montgomery	2,490	2,549	2,489	2,317	2,249	(241)	(9.7%)
Neshoba	12,182	12,293	12,143	11,915	11,998	(184)	(1.5%)
Newton	5,773	5,619	5,492	5,477	5,595	(178)	(3.1%)
Noxubee	2,466	2,510	2,504	2,470	2,430	(36)	(1.5%)
Oktibbeha	19,401	20,022	19,923	20,194	20,351	950	4.9%
Panola	10,718	10,505	10,395	10,258	10,060	(658)	(6.1%)
Pearl River	9,931	10,139	10,138	10,315	10,530	599	6.0%
Perry	2,026	2,050	2,050	2,079	2,191	165	8.1%
Pike	14,678	14,672	14,747	14,677	14,605	(73)	(0.5%)
Pontotoc	12,350	12,590	12,442	12,465	12,645	295	2.4%
Prentiss	7,178	7,174	7,284	7,412	7,435	257	3.6%
Quitman	1,107	1,068	956	942	958	(149)	(13.5%)
Rankin	60,706	61,403	61,325	61,773	62,937	2,231	3.7%
Scott	13,242	13,542	13,657	13,494	13,093	(149)	(1.1%)
Sharkey	1,161	1,169	1,180	1,176	1,118	(43)	(3.7%)
Simpson	6,858	6,840	6,977	7,106	7,270	412	6.0%
Smith	2,712	2,718	2,707	2,734	2,721	9	0.3%
Stone	3,987	4,074	4,163	4,342	4,465	478	12.0%
Sunflower	8,465	8,426	8,303	8,186	8,031	(434)	(5.1%)
Tallahatchie	3,022	2,996	2,962	2,834	2,816	(206)	(6.8%)
Tate	5,381	5,437	5,455	5,488	5,430	49	0.9%
Tippah	6,551	6,476	6,502	6,499	6,494	(57)	(0.9%)
Tishomingo	5,800	6,088	6,105	6,307	6,431	631	10.9%
Tunica	8,734	8,605	8,344	8,007	7,449	(1,285)	(14.7%)
Union	10,093	10,549	10,956	11,079	11,227	1,134	11.2%
Walthall	2,494	2,372	2,360	2,393	2,283	(211)	(8.5%)
Warren	18,083	17,962	17,615	17,285	17,123	(960)	(5.3%)
Washington	17,006	16,958	16,617	16,252	15,914	(1,092)	(6.4%)
Wayne	4,827	4,838	4,872	4,924	4,932	105	2.2%
Webster	1,920	1,880	1,898	1,924	1,973	53	2.8%
Wilkinson	1,728	1,667	1,677	1,620	1,611	(117)	(6.8%)
Winston	4,529	4,606	4,755	4,906	4,974	445	9.8%
Yalobusha	2,890	2,766	2,820	2,849	2,695	(195)	(6.7%)
Yazoo	5,588	5,374	5,683	5,582	5,560	(28)	(0.5%)

**METROPOLITAN STATISTICAL AREAS**

G-B-P	137,138	138,735	138,391	138,804	139,542	2,404	1.8%
HATTIESBURG	57,868	59,134	60,372	61,044	61,470	3,602	6.2%
JACKSON	247,952	251,949	253,103	252,231	253,307	5,355	2.2%

**WORKFORCE DEVELOPMENT AREAS**

DELTA	91,269	90,787	89,635	87,707	86,044	(5,225)	(5.7%)
MS PARTNERSHIP	297,932	308,998	312,251	316,374	319,742	21,810	7.3%
SC MS WORKS	317,606	321,041	321,865	320,934	321,510	3,904	1.2%
TWIN DISTRICTS	343,669	346,617	346,958	347,712	349,741	6,072	1.8%

## LOCAL AREA HIGHLIGHTS - COVERED EMPLOYMENT

	RANK		COMMENTS
	NET CHG	PCT CHG	
Marshall	8	1	Increases in most sectors with only insignificant decreases in a few
Monroe	39	40	Increase in Manufacturing; Decrease in Construction
Montgomery	66	78	Continuing decrease in Education & Health Services
Neshoba	60	54	Decreases in most sectors; Increases in Public Administration and Trade, Transp. & Utilities
Newton	59	60	Decrease in Education & Health Services; Increase in Natural Resources & Mining
Noxubee	49	53	Decreases in Financial Activities and Education & Health Services; Increase in Nat. Resources & Mining
Oktibbeha	11	20	Increases in most sectors but a considerable decrease in Manufacturing
Panola	76	66	Substantial decrease in Professional & Business Services
Pearl River	14	15	Increases in most sectors with only slight decreases in Financial Activities and Construction
Perry	27	9	Increases in Construction and Manufacturing
Pike	53	45	Decreases in Trade, Transp. & Utilities and Natural Resources & Mining; Increase in Manufacturing
Pontotoc	23	32	Increases in Education & Health Services and Trade, Transp. & Utilities; Decrease in Manufacturing
Prentiss	25	26	Mostly increases with very small decreases in Natural Resources & Mining and Financial Activities
Quitman	56	79	Decreases in most, highest in Education & Health Services, with weak gains in a couple of sectors
Rankin	7	25	Ample increases in most sectors largest was in Education & Health Services
Scott	57	51	Considerable decrease in Natural Resources & Mining; Increase in Manufacturing
Sharkey	51	63	Not much change with notable decreases in Other Services and Natural Resources & Mining
Simpson	21	16	Substantial increase in Education & Health Services; Decrease in Professional & Business Services
Smith	41	41	Increase in Trade, Transportation & Utilities; Decrease in Construction
Stone	16	4	Increases in Education & Health Services, Leisure & Hospitality, and Trade, Transportation & Utilities
Sunflower	73	64	Significant decrease in Public Administration
Tallahatchie	64	71	Decreases in most sectors, largest in Professional & Business Services
Tate	38	39	Growth in Construction and Mfg.; Losses in Education & Health Svcs. and Trade, Transp. & Utilities
Tippah	52	48	Large reduction in Manufacturing overshadowed gains in Education & Health Services
Tishomingo	13	6	Significant Manufacturing growth
Tunica	82	80	Severe decline in Leisure & Hospitality
Union	9	5	Notable increases in most sectors with slight decreases in Other Services and Nat. Resources & Mining
Walthall	65	76	Continued decreases across all sectors except Public Administration
Warren	79	65	All sectors showed declines
Washington	80	67	Decreases in almost all sectors, with only small gains in Other Services and Prof. & Business Svcs.
Wayne	32	33	Overall increases, highest in Trade, Transp. and Utilities; Largest decrease in Construction
Webster	37	30	Slight growth overall with Construction and Trade, Transportation & Utilities posting best gains
Wilkinson	54	70	Decreases in most sectors
Winston	19	7	Great growth in Manufacturing
Yalobusha	63	69	Overall decreases led by Professional & Business Services
Yazoo	47	46	Overall decrease led by Financial Activities; Increase in Education & Health Services

## METROPOLITAN STATISTICAL AREAS

G-B-P	3	3	Increases in Leisure & Hospitality and Education & Health Svcs.; Decreases in Constr. and Mfg.
HATTIESBURG	2	1	Increases in most sectors, led by Education & Health Services; Slight decrease in Information
JACKSON	1	2	Increases in Education & Health Services and Leisure & Hospitality; Decrease in Information

## WORKFORCE DEVELOPMENT AREAS

DELTA	4	4	Only Manufacturing sector showed growth
MS PARTNERSHIP	1	1	Increases in all but two sectors with largest increase in Trade, Transportation and Utilities
SC MS WORKS	3	3	Increase in Education & Health Services; Decrease in Information
TWIN DISTRICTS	2	2	Increases in Leisure & Hospitality and Education & Health Svcs.; Decrease in Construction

# PER CAPITA INCOME

The U.S. Bureau of Economic Analysis (BEA) tabulates per capita income quarterly and annually for states and counties. Per capita income (PCI) measures the overall economic health of an area. PCI is calculated from the total personal income of residents in a given area divided by the population of the same area. As with most data sets, it is not a

perfect statistic and some biases exist. For example, a county or state with a particularly high concentration

of children or senior citizens may have its per capita income skewed downward as these groups are included in population totals but make little or no contribution to the total income. For the most part, though, PCI is a reliable measure and worthy of review.

Per capita income for Mississippi is about seventy percent of the national figure; this ratio has remained steady over the past several years. Historically, Mississippi has one of the lowest per capita income levels of any state and there are wide discrepancies in the level of income among the various counties and regions. Madison County, at \$64,033, again exceeded the national per capita income level of \$54,446, remaining first in PCI in the state from 2014 to 2018. Madison was fourth in net change and had a percent change of forty-six. Issaquena, the least populated county ranked last in PCI, thirty-second in net change but came in first in

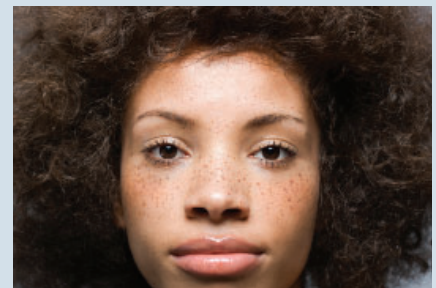
percent change. Rankin County came in sixty-fifth in percent change, forty-ninth in net change and second in PCI. Lafayette County remained third in PCI and first in net growth but dropped to fourth in percent increase from first last year. Jackson County ranked fifty-third for net change and sixtieth for percent change over the five-year period while maintaining their standing in the top twenty PCI in the state, nineteenth this year. All eighty-two counties had an increase from 2014 to 2018.

Among the Metropolitan Statistical Areas, Jackson MSA ranked first in income level, second in net growth and in percent increase over the same period. Hattiesburg MSA was second highest in PCI and first in net increase and percent growth, while Gulfport-Biloxi-Pascagoula ranked third in all measures.

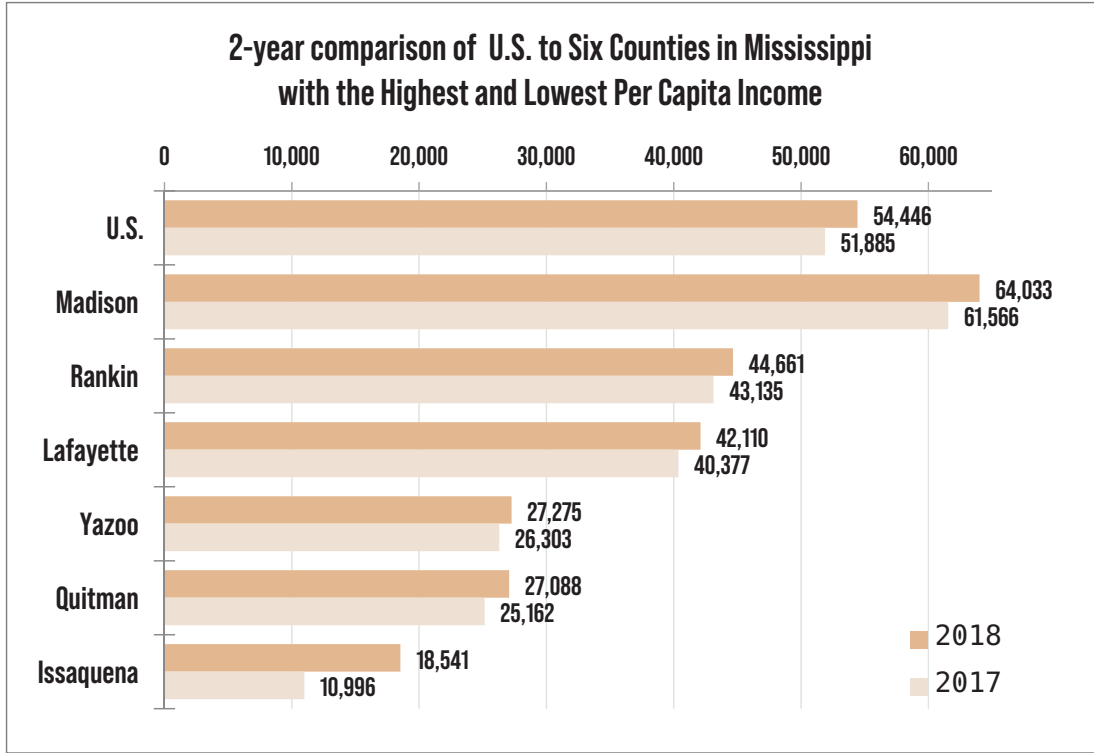
The Mississippi Partnership Workforce Development Area had the second highest PCI and was first in net change and percent change.

Southcentral Mississippi Works WDA ranked first in income, third in net increase and last in percent growth. Twin Districts came in third in PCI and percent change, and last in net change while Delta WDA recorded the lowest PCI, but ranked second on both net and percent change over the five-year period.

*Mississippi has one of the lowest per capita income levels of any state*



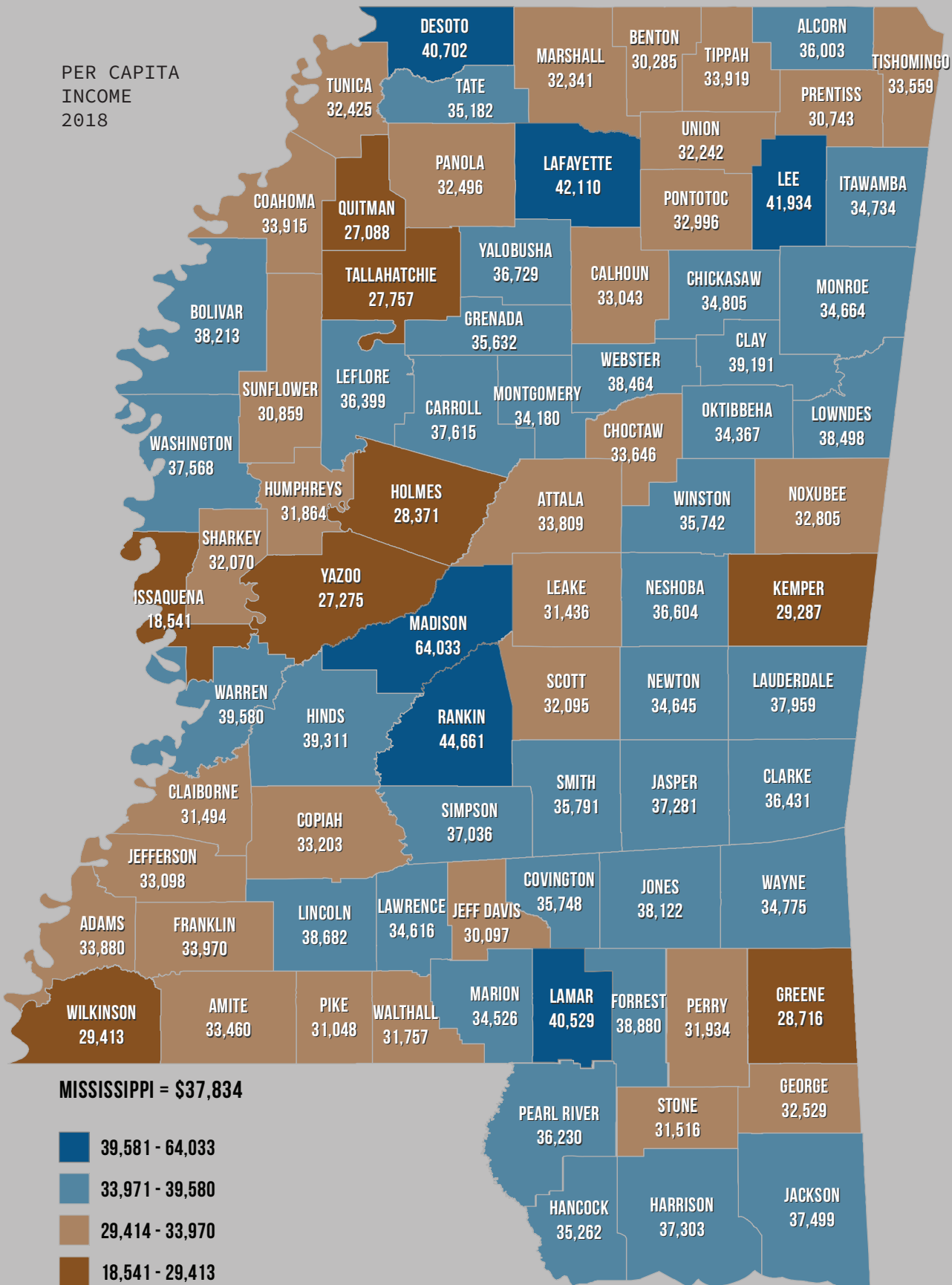




Source: U.S. Department of Commerce - Bureau of Economic Analysis



PER CAPITA  
INCOME  
2018



Source: Bureau of Economic Analysis

## PER CAPITA INCOME

						2014 to 2018		RANK		
	2014	2015	2016	2017	2018	NET CHG	PCT CHG	PCI 2018	NET CHG	PCT CHG
MISSISSIPPI	\$34,545	\$35,022	\$35,613	\$36,375	\$37,834	\$3,289	9.5%	N/A	N/A	N/A
Adams	33,688	32,545	32,098	32,428	33,880	192	0.6%	47	82	82
Alcorn	31,614	32,501	33,076	34,364	36,003	4,389	13.9%	28	17	20
Amite	29,938	29,985	30,465	32,432	33,460	3,522	11.8%	51	36	33
Attala	31,124	31,621	32,156	32,603	33,809	2,685	8.6%	48	51	52
Benton	26,644	28,160	28,097	29,198	30,285	3,641	13.7%	73	29	22
Bolivar	33,257	33,759	35,451	36,104	38,213	4,956	14.9%	14	10	14
Calhoun	28,435	29,474	31,045	32,079	33,043	4,608	16.2%	54	13	8
Carroll	32,410	33,618	34,877	36,056	37,615	5,205	16.1%	17	8	9
Chickasaw	30,852	31,016	31,620	33,663	34,805	3,953	12.8%	35	24	24
Choctaw	28,747	30,355	31,526	31,949	33,646	4,899	17.0%	49	12	7
Claiborne	28,642	29,289	29,275	30,364	31,494	2,852	10.0%	68	48	42
Clarke	35,719	34,633	34,660	35,268	36,431	712	2.0%	25	79	79
Clay	35,661	35,325	35,872	37,625	39,191	3,530	9.9%	9	35	43
Coahoma	30,204	31,375	33,335	32,818	33,915	3,711	12.3%	46	27	29
Copiah	30,736	31,231	31,247	32,250	33,203	2,467	8.0%	52	59	56
Covington	33,107	32,078	31,064	34,699	35,748	2,641	8.0%	30	54	57
DeSoto	35,504	36,842	38,168	39,022	40,702	5,198	14.6%	5	9	17
Forrest	35,692	36,294	36,793	37,202	38,880	3,188	8.9%	10	44	50
Franklin	32,200	33,477	33,037	33,236	33,970	1,770	5.5%	44	70	71
George	31,656	31,956	31,432	31,697	32,529	873	2.8%	57	78	78
Greene	26,541	28,507	27,960	27,973	28,716	2,175	8.2%	77	65	55
Grenada	31,056	32,587	33,859	34,458	35,632	4,576	14.7%	32	15	16
Hancock	33,874	33,114	33,577	33,998	35,262	1,388	4.1%	33	74	74
Harrison	35,067	35,364	35,877	36,087	37,303	2,236	6.4%	20	63	67
Hinds	37,957	37,942	37,817	37,633	39,311	1,354	3.6%	8	75	76
Holmes	24,544	25,608	27,619	27,367	28,371	3,827	15.6%	78	25	10
Humphreys	27,730	26,991	28,869	29,932	31,864	4,134	14.9%	65	21	13
Issaquena	14,940	13,125	18,428	10,996	18,541	3,601	24.1%	82	32	1
Itawamba	31,071	31,635	32,441	33,582	34,734	3,663	11.8%	37	28	32
Jackson	34,845	35,368	35,715	36,297	37,499	2,654	7.6%	19	53	60
Jasper	34,802	34,249	33,417	36,001	37,281	2,479	7.1%	21	58	63
Jefferson	30,578	30,150	30,998	31,910	33,098	2,520	8.2%	53	56	54
Jefferson Davis	26,740	27,314	27,618	29,568	30,097	3,357	12.6%	74	39	28
Jones	37,554	36,468	35,687	36,933	38,122	568	1.5%	15	80	80
Kemper	27,354	27,281	28,470	28,571	29,287	1,933	7.1%	76	67	64
Lafayette	34,932	37,165	39,338	40,377	42,110	7,178	20.5%	3	1	4
Lamar	35,944	37,597	38,065	38,885	40,529	4,585	12.8%	6	14	25
Lauderdale	34,753	35,144	36,593	36,534	37,959	3,206	9.2%	16	43	47
Lawrence	32,221	32,030	30,830	33,170	34,616	2,395	7.4%	40	60	61
Leake	29,637	28,204	27,422	30,286	31,436	1,799	6.1%	69	69	69
Lee	36,621	37,597	38,811	40,345	41,934	5,313	14.5%	4	6	18
Leflore	31,093	31,869	33,601	34,769	36,399	5,306	17.1%	26	7	6
Lincoln	35,450	35,965	36,208	37,484	38,682	3,232	9.1%	11	41	48
Lowndes	35,034	35,254	35,885	36,657	38,498	3,464	9.9%	12	37	44
Madison	58,444	58,859	60,238	61,566	64,033	5,589	9.6%	1	4	46
Marion	29,193	30,159	29,710	32,880	34,526	5,333	18.3%	41	5	5

SOURCE: U.S. Bureau of Economic Analysis

## PER CAPITA INCOME

	2014	2015	2016	2017	2018	2014 to 2018		RANK		
						NET CHG	PCT CHG	PCI 2018	NET CHG	PCT CHG
Marshall	\$28,732	\$29,833	\$30,405	\$31,072	\$32,341	\$3,609	12.6%	60	31	27
Monroe	31,085	32,035	32,293	33,180	34,664	3,579	11.5%	38	33	34
Montgomery	30,039	31,376	32,095	32,883	34,180	4,141	13.8%	43	20	21
Neshoba	34,356	33,482	33,388	35,409	36,604	2,248	6.5%	24	62	66
Newton	33,198	32,535	32,319	33,778	34,645	1,447	4.4%	39	73	73
Noxubee	29,769	29,619	30,451	31,581	32,805	3,036	10.2%	56	45	41
Oktibbeha	30,734	31,286	32,257	32,748	34,367	3,633	11.8%	42	30	31
Panola	29,987	30,791	31,052	31,684	32,496	2,509	8.4%	58	57	53
Pearl River	33,020	34,274	34,446	34,803	36,230	3,210	9.7%	27	42	45
Perry	28,697	29,212	29,976	30,674	31,934	3,237	11.3%	64	40	35
Pike	30,008	29,936	29,716	29,966	31,048	1,040	3.5%	70	77	77
Pontotoc	29,277	30,595	31,118	31,956	32,996	3,719	12.7%	55	26	26
Prentiss	27,723	28,547	29,116	29,794	30,743	3,020	10.9%	72	46	37
Quitman	24,420	24,535	26,856	25,162	27,088	2,668	10.9%	81	52	36
Rankin	41,864	42,537	42,738	43,135	44,661	2,797	6.7%	2	49	65
Scott	29,455	28,517	28,569	30,866	32,095	2,640	9.0%	62	55	49
Sharkey	26,199	27,265	28,708	30,238	32,070	5,871	22.4%	63	3	2
Simpson	34,335	33,567	33,533	35,865	37,036	2,701	7.9%	22	50	59
Smith	34,492	32,311	31,276	34,495	35,791	1,299	3.8%	29	76	75
Stone	30,067	29,970	30,429	30,560	31,516	1,449	4.8%	67	72	72
Sunflower	26,883	26,494	28,422	28,926	30,859	3,976	14.8%	71	23	15
Tallahatchie	25,487	25,053	27,223	27,157	27,757	2,270	8.9%	79	61	51
Tate	31,141	32,221	33,575	33,572	35,182	4,041	13.0%	34	22	23
Tippah	29,772	30,688	31,530	32,614	33,919	4,147	13.9%	45	19	19
Tishomingo	29,121	30,245	31,468	31,711	33,559	4,438	15.2%	50	16	11
Tunica	30,581	30,001	33,576	31,035	32,425	1,844	6.0%	59	68	70
Union	29,254	30,029	30,762	31,432	32,242	2,988	10.2%	61	47	40
Walthall	29,581	30,288	29,402	31,271	31,757	2,176	7.4%	66	64	62
Warren	35,265	36,249	37,437	37,983	39,580	4,315	12.2%	7	18	30
Washington	32,661	33,752	34,904	35,916	37,568	4,907	15.0%	18	11	12
Wayne	34,521	31,952	30,940	33,261	34,775	254	0.7%	36	81	81
Webster	31,862	34,664	36,421	36,973	38,464	6,602	20.7%	13	2	3
Wilkinson	27,250	27,604	27,539	28,516	29,413	2,163	7.9%	75	66	58
Winston	32,357	32,098	32,377	34,214	35,742	3,385	10.5%	31	38	39
Yalobusha	33,183	33,783	34,366	35,020	36,729	3,546	10.7%	23	34	38
Yazoo	25,661	26,690	26,840	26,303	27,275	1,614	6.3%	80	71	68

## METROPOLITAN STATISTICAL AREAS

G-B-P	34,843	35,097	35,544	35,914	37,131	2,287	6.6%	3	3	3
HATTIESBURG	35,225	36,253	36,764	37,369	39,015	3,790	10.8%	2	1	1
JACKSON	41,404	41,753	42,057	42,485	44,240	2,836	6.8%	1	2	2

## WORKFORCE DEVELOPMENT AREAS

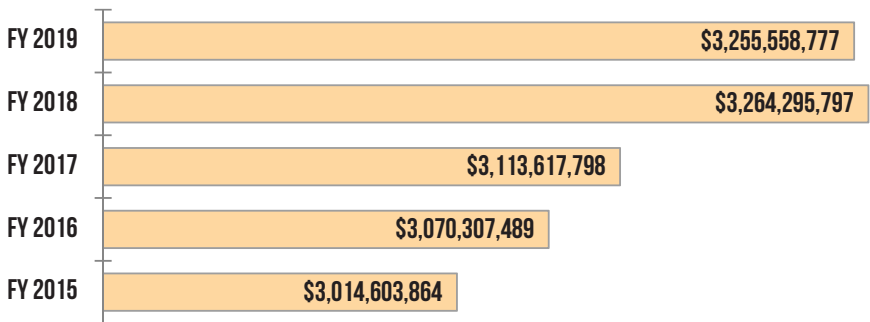
DELTA	29,839	30,403	32,007	32,372	33,872	4,033	13.5%	4	2	2
MS PARTNERSHIP	32,621	33,624	34,632	35,574	37,087	4,466	13.7%	2	1	1
SC MS WORKS	38,877	39,203	39,464	40,028	41,641	2,764	7.1%	1	3	4
TWIN DISTRICTS	34,049	34,164	34,380	35,238	36,518	2,469	7.3%	3	4	3

SOURCE: U.S. Bureau of Economic Analysis



# SALES TAX COLLECTIONS

## SALES TAX COLLECTED 2015-2019 MISSISSIPPI



The economic health of an area may be assessed by looking at sales tax collections as it is a good indication of consumer spending, since almost all goods and services are subject to the state sales tax. Consumer spending increases likely indicate increased earnings, reflecting confidence in the current economic climate. Conversely, when consumer spending decreases it could indicate a declining economy. When comparing data between counties, however, presumptions arise based on collections. For example, more populous cities and counties are generally home to a larger number of businesses hence more sales taxes are collected. As well, in rural areas with fewer businesses, residents may purchase goods and services in neighboring counties, both skewing the data in favor of more urban areas since tax collections are recorded at the point of sale.



Twenty-seven counties registered drops in sales tax collections between the fiscal years of 2015 and 2019. Hinds County collected the most sales tax in fiscal year 2019, but was last in net

change, and sixtieth in percent growth over the five-year period. Harrison County had the second highest sales tax collected and ranked third highest in net change over the same period. Benton County claimed the highest percentage change with a 41.1% increase but ranks seventy-ninth in dollar amount and fortieth in net change. Greene County had the second highest percent increase at 36.5%, thirty-third in net change, but only seventieth in net collections. Desoto County ranks first in net change over the five-year period, fourth in collections and fifth in percent change. Twenty-seven counties posted a sales tax revenue increase of at least ten percent over the 2015-2019 period.

Looking at Mississippi's three Metropolitan Statistical Areas over the five-year period, Jackson MSA ranked first in net sales tax collections, second in net change and third in percent change, with five of its six

counties posting increases. Gulfport-Biloxi-Pascagoula MSA ranked first in net change and second in net collections with sales tax revenue increasing 10.7%, the largest in percent change. Hattiesburg MSA ranked last in both sales tax collections and net change for the five-year period but second in percent change.

Twin Districts Workforce Development Area was first in revenue and second in growth and percent increase. Southcentral Mississippi Works WDA was second in sales tax collections and third in both net and percent change. Mississippi Partnership WDA was third in revenue but posted a strong first place in net change and also claimed the top spot in percent change with a 13.4% increase. Even though six of its fourteen counties, lost sales tax revenues over the period, the Delta WDA it still managed a slight increase overall in percentage.



## SALES TAX COLLECTED

	FY 2015	FY 2016	FY 2017	FY 2018	FY 2019	2015 to 2019		RANK		
						NET CHG	PCT CHG	Tax 2019	NET CHG	PCT CHG
MISSISSIPPI	3,014,603,864	3,070,307,489	3,113,617,798	3,264,295,797	3,255,558,777	240,954,913	8.0%	N/A	N/A	N/A
Adams	36,630,937	35,110,395	34,220,719	34,339,584	33,926,391	(2,704,546)	(7.4%)	22	79	71
Alcorn	35,913,029	37,153,787	37,093,613	37,009,911	38,012,859	2,099,830	5.8%	19	24	38
Amite	4,730,874	3,802,848	3,681,484	3,594,194	4,361,071	(369,803)	(7.8%)	65	63	73
Attala	12,546,353	12,884,855	13,141,214	13,222,513	13,213,425	667,072	5.3%	44	38	43
Benton	1,423,208	2,043,633	1,654,120	1,722,921	2,008,753	585,545	41.1%	79	40	1
Bolivar	25,626,887	27,027,917	26,773,903	27,589,946	27,991,597	2,364,710	9.2%	26	22	28
Calhoun	6,902,129	6,723,046	6,856,310	6,824,954	6,461,629	(440,500)	(6.4%)	56	64	69
Carroll	1,762,085	1,900,212	1,953,933	1,887,703	1,866,066	103,981	5.9%	80	52	37
Chickasaw	8,970,938	9,394,895	9,406,021	9,538,758	10,103,067	1,132,129	12.6%	53	31	21
Choctaw	3,088,699	2,634,908	2,316,456	2,599,814	2,452,552	(636,147)	(20.6%)	76	67	79
Claiborne	2,713,117	3,052,463	2,923,213	2,707,827	2,754,313	41,196	1.5%	74	53	52
Clarke	6,278,635	5,433,086	5,415,815	5,445,826	6,429,024	150,389	2.4%	57	50	49
Clay	16,060,574	14,851,766	14,865,820	14,839,632	15,350,531	(710,043)	(4.4%)	38	70	65
Coahoma	17,230,918	16,764,967	16,961,401	16,936,467	16,488,962	(741,956)	(4.3%)	37	71	63
Copiah	13,881,645	14,387,772	13,750,163	14,188,880	14,636,350	754,705	5.4%	39	36	42
Covington	11,653,543	12,073,261	12,806,924	13,225,123	14,395,542	2,741,999	23.5%	41	17	4
DeSoto	177,309,629	193,831,265	202,953,289	223,074,200	216,972,885	39,663,256	22.4%	4	1	5
Forrest	87,138,941	87,404,474	89,453,331	92,037,186	96,484,136	9,345,195	10.7%	8	8	26
Franklin	2,525,411	2,767,088	2,938,208	3,409,892	2,844,045	318,634	12.6%	73	46	22
George	19,052,086	15,930,708	16,324,067	16,942,100	17,570,349	(1,481,737)	(7.8%)	34	76	72
Greene	2,502,354	2,991,898	2,918,106	3,157,232	3,414,983	912,629	36.5%	70	33	2
Grenada	25,803,369	26,443,955	26,923,105	27,808,921	28,858,243	3,054,874	11.8%	25	16	23
Hancock	32,592,972	33,374,129	32,103,172	39,478,712	37,332,794	4,739,822	14.5%	21	11	15
Harrison	265,229,114	274,841,918	276,504,793	301,407,641	292,033,358	26,804,244	10.1%	2	3	27
Hinds	306,051,017	304,994,900	297,413,648	303,701,549	297,725,374	(8,325,643)	(2.7%)	1	82	60
Holmes	5,825,027	6,113,179	7,227,351	6,434,844	6,192,652	367,625	6.3%	58	45	35
Humphreys	3,493,223	3,509,822	3,325,306	3,230,835	3,024,637	(468,586)	(13.4%)	72	65	76
Issaquena	503,483	134,562	495,195	244,940	261,197	(242,286)	(48.1%)	82	61	81
Itawamba	10,716,698	11,177,437	12,281,206	12,124,040	12,114,492	1,397,794	13.0%	47	30	19
Jackson	99,854,189	96,647,246	100,350,924	103,760,314	110,683,126	10,828,937	10.8%	7	7	25
Jasper	8,799,359	6,983,872	6,639,119	6,984,644	7,494,110	(1,305,249)	(14.8%)	55	74	77
Jefferson	2,153,796	2,317,449	2,107,977	2,065,133	2,185,273	31,477	1.5%	78	54	53
Jefferson Davis	3,475,883	3,983,871	3,693,163	3,563,504	3,331,833	(144,050)	(4.1%)	71	59	62
Jones	77,018,902	66,180,596	66,403,581	70,720,426	72,377,812	(4,641,090)	(6.0%)	11	80	68
Kemper	7,103,017	5,235,995	3,773,836	2,614,842	2,357,238	(4,745,779)	(66.8%)	77	81	82
Lafayette	58,809,345	67,758,908	75,039,116	77,137,767	70,083,618	11,274,273	19.2%	12	6	7
Lamar	80,155,516	83,137,261	84,099,042	90,891,265	85,639,158	5,483,642	6.8%	10	10	33
Lauderdale	93,515,942	93,374,277	92,299,857	91,702,306	91,480,946	(2,034,996)	(2.2%)	9	77	59
Lawrence	4,202,771	4,237,749	4,159,779	4,087,253	4,464,475	261,704	6.2%	63	47	36
Leake	10,961,333	11,381,108	11,616,318	11,594,437	11,762,011	800,678	7.3%	49	35	32
Lee	130,214,443	141,040,499	146,317,747	154,324,147	151,011,846	20,797,403	16.0%	6	4	12
Leflore	29,597,104	29,306,297	30,861,867	31,171,451	31,312,855	1,715,751	5.8%	24	27	39
Lincoln	37,861,994	38,750,738	38,881,965	44,777,861	40,273,821	2,411,827	6.4%	18	20	34
Lowndes	66,444,026	67,852,892	69,286,511	67,202,779	67,853,432	1,409,406	2.1%	13	29	50
Madison	138,932,596	147,812,533	151,191,889	160,952,904	158,578,577	19,645,981	14.1%	5	5	16
Marion	22,694,519	21,741,302	21,360,460	21,794,000	22,022,888	(671,631)	(3.0%)	29	68	61

SOURCE: Mississippi Department of Revenue

## SALES TAX COLLECTED

	FY 2015	FY 2016	FY 2017	FY 2018	FY 2019	2015 to 2019		RANK		
						NET CHG	PCT CHG	Tax 2019	NET CHG	PCT CHG
Marshall	17,611,113	15,773,620	16,845,981	16,609,527	20,232,455	2,621,342	14.9%	32	19	13
Monroe	19,628,703	20,383,102	20,863,026	19,999,811	20,730,502	1,101,799	5.6%	31	32	40
Montgomery	6,611,087	6,471,173	6,972,739	6,712,089	5,909,957	(701,130)	(10.6%)	59	69	75
Neshoba	24,196,644	24,840,419	25,743,651	25,619,259	26,231,454	2,034,810	8.4%	27	25	30
Newton	9,723,502	10,186,953	10,035,804	9,642,433	9,890,748	167,246	1.7%	54	49	51
Noxubee	4,843,549	4,871,473	4,713,393	4,577,482	4,819,542	(24,007)	(0.5%)	61	56	56
Oktibbeha	44,669,915	48,766,665	47,195,802	48,593,104	50,899,627	6,229,712	13.9%	15	9	17
Panola	30,123,234	31,707,735	32,706,425	33,077,688	32,800,594	2,677,360	8.9%	23	18	29
Pearl River	33,742,368	35,132,441	36,058,887	42,401,809	37,608,538	3,866,170	11.5%	20	12	24
Perry	3,774,567	4,186,413	4,011,032	4,093,309	4,465,319	690,752	18.3%	62	37	8
Pike	43,939,984	44,706,706	44,642,639	45,733,433	44,452,196	512,212	1.2%	16	42	54
Pontotoc	17,706,392	19,982,729	19,824,811	20,138,021	21,300,551	3,594,159	20.3%	30	14	6
Prentiss	13,193,038	12,965,199	13,478,315	13,874,776	13,649,053	456,015	3.5%	43	44	47
Quitman	1,957,039	1,838,860	2,660,880	1,833,204	1,473,243	(483,796)	(24.7%)	81	66	80
Rankin	214,916,733	224,674,767	228,890,515	240,678,806	242,539,339	27,622,606	12.9%	3	2	20
Scott	18,237,618	18,325,244	18,250,213	19,144,872	19,043,510	805,892	4.4%	33	34	46
Sharkey	2,508,944	2,374,313	2,364,453	2,528,004	2,645,881	136,937	5.5%	75	51	41
Simpson	16,515,804	16,464,639	16,964,668	16,979,130	17,003,300	487,496	3.0%	36	43	48
Smith	5,744,977	5,083,686	4,999,262	5,409,603	5,661,357	(83,620)	(1.5%)	60	57	58
Stone	10,778,139	11,551,861	11,774,608	12,045,149	12,620,049	1,841,910	17.1%	46	26	9
Sunflower	13,482,824	13,663,084	13,606,992	13,620,721	14,102,409	619,585	4.6%	42	39	45
Tallahatchie	3,649,761	3,646,021	3,588,732	3,739,331	4,183,077	533,316	14.6%	67	41	14
Tate	14,625,824	14,864,886	15,716,040	16,586,622	17,006,369	2,380,545	16.3%	35	21	11
Tippah	10,452,820	11,201,449	11,181,065	11,752,120	11,877,166	1,424,346	13.6%	48	28	18
Tishomingo	9,304,424	10,259,932	10,356,636	10,606,209	11,508,587	2,204,163	23.7%	51	23	3
Tunica	12,085,733	10,692,343	10,550,034	10,764,762	11,213,318	(872,415)	(7.2%)	52	73	70
Union	19,395,867	20,888,059	20,737,991	22,186,426	22,554,929	3,159,062	16.3%	28	15	10
Walthall	4,620,976	4,608,326	4,601,310	4,472,869	4,421,106	(199,870)	(4.3%)	64	60	64
Warren	47,306,996	48,456,244	49,934,895	55,180,363	51,108,239	3,801,243	8.0%	14	13	31
Washington	44,929,850	44,504,612	43,621,287	43,118,284	42,261,908	(2,667,942)	(5.9%)	17	78	67
Wayne	14,657,172	13,722,666	13,476,252	14,217,737	14,565,459	(91,713)	(0.6%)	40	58	57
Webster	3,844,015	3,889,954	3,867,553	4,141,338	4,022,287	178,272	4.6%	68	48	44
Wilkinson	4,276,953	3,691,694	3,528,660	3,641,612	3,447,329	(829,624)	(19.4%)	69	72	78
Winston	13,085,824	13,558,207	13,246,610	12,124,078	11,710,706	(1,375,118)	(10.5%)	50	75	74
Yalobusha	4,553,391	4,237,528	4,501,566	4,440,943	4,292,606	(260,785)	(5.7%)	66	62	66
Yazoo	13,177,409	13,253,409	13,349,065	13,446,721	13,189,527	12,118	0.1%	45	55	55

## METROPOLITAN STATISTICAL AREAS

G-B-P	397,676,275	404,863,293	408,958,889	444,646,667	440,049,278	42,373,003	10.7%	2	1	1
HATTIESBURG	171,069,024	174,728,148	177,563,405	187,021,760	186,588,613	15,519,589	9.1%	3	3	2
JACKSON	703,475,204	721,588,020	721,559,948	749,947,990	743,672,467	40,197,263	5.7%	1	2	3

## WORKFORCE DEVELOPMENT AREAS

DELTA	192,776,112	193,183,924	196,697,759	196,178,180	195,818,396	3,042,284	1.6%	4	4	4
MS PARTNERSHIP	753,728,402	801,905,822	827,636,056	859,772,903	855,011,669	101,283,267	13.4%	3	1	1
SC MS WORKS	894,439,013	913,089,720	913,180,797	953,958,011	937,910,726	43,471,713	4.9%	2	3	3
TWIN DISTRICTS	948,881,292	943,744,685	950,112,217	1,007,893,729	1,004,895,742	56,014,450	5.9%	1	2	2

SOURCE: Mississippi Department of Revenue



# ECONOMIC STABILITY

*Five separate indexes are used to obtain a composite rating*



Indexing is a common statistical procedure used as a comparative measurement. Taken from the economic indicators highlighted in this publication, five separate indexes were developed. Using the state as a base of 1.000, each county, Metropolitan Statistical Area and Workforce Development Area are “indexed” in relation to the state’s base for each series selected. In some cases, the latest available data are used, and in others, a five-year growth rate is used. This allows for a mixture of long-term trends and current data. The method used and rationale for selecting each series indexed follows.

Covered Employment growth was the first data set selected. The 2019 state total divided by the total in 2015 yielded a growth factor of 1.019. Similar factors are determined for each area. The local factor divided by the state factor obtained the index. For example, if the growth factor for a particular area is .976, the resulting index would be .976 divided by 1.019, or .958. Using the same methodology Population growth and Sales Tax growth were determined. One of the current data series chosen was Labor Force Percent Employed. Percent employed was selected instead of the more commonly reported percent unemployed since the larger numbers produced less volatility in the index.







Also, since lower is better when looking at percent unemployed, the ratio would have had to be reversed to produce the desired effect of measuring it versus the state. The other current series selected is Per Capita Income. In this case, the area's PCI is divided by the statewide figure to obtain the index. The five separate indexes are then summed to produce a composite index. The counties, Metropolitan Statistical Areas, and Workforce Development Areas are ranked according to the composite score. Taking into account the strengths and weaknesses of each entity, this composite index expectantly produces a method by which to make valid comparisons between areas.

Madison, Desoto, Lafayette, Rankin and Lee Counties made up the top five again this year, which is not surprising due to their high rankings in covered employment growth, population, and per capita income. Making an impressive jump in rankings was Benton County at number six, posting the largest improvement from last year, up seventy-one places. Benton logged an index change of 0.767 from 4.392 to 5.160. The change is primarily to increases in

sales tax collections, covered employment and population. A second county making an unexpected appearance in the top ten was Marshall County, moving up nineteen spots to number eight from twenty-seven last year. A combination of increases in covered employment and sales tax collections fueled its rise. Green County had an impressive rise as well, not in the top ten but moving up forty-one places, from sixty-fifth last year to twenty-fourth this year, possibly making a small recovery from previous declines in population and labor force.

Considered "average" counties in terms of economic stability, Stone and Oktibbeha Counties have composite indexes very near the statewide base



of 5.000. Lincoln County dropped nine spots from its eighth place rank last year and out of the top ten, ranking seventeenth this year; a slight population decline may have had a minor effect but more likely it is due to a moderate change in sales tax collections. Choctaw County made the largest decline in rankings of all counties, falling forty-six places to sixty-ninth, almost certainly due to a decrease in population and sales tax collections.

Among the Metropolitan Statistical Areas, Jackson came out on top with a 5.158 composite, capitalizing on above-average indexes in four of the five categories and despite its population decline. With its above average index in both per capita income and covered employment, the Hattiesburg MSA, ranked second, having an average or above-average index in all categories. Even with a second place ranking in population, Mississippi Partnership scored highest among the Workforce Development Areas at 5.101, closely followed by Southcentral Mississippi Works with 5.061. Twin Districts WDA with an index of 4.953 was third, followed by Delta WDA with an index of 4.678.



## INDEX OF ECONOMIC STABILITY

	Five Year Covered Employment Growth	Labor Force Employed 2019	Per Capita Income 2018	Five Year Total Population Growth	Five Year Sales Tax Growth	Composite Index	Rank
MISSISSIPPI	1.000	1.000	1.000	1.000	1.000	5.000	XXX
Adams	0.965	0.982	0.895	0.977	0.858	4.677	67
Alcorn	1.014	1.007	0.952	0.995	0.980	4.949	28
Amite	1.070	0.983	0.884	0.984	0.854	4.774	56
Attala	0.996	0.991	0.894	0.978	0.975	4.833	44
Benton	1.044	0.992	0.800	1.017	1.307	5.160	6
Bolivar	0.904	0.983	1.010	0.926	1.011	4.834	43
Calhoun	0.971	0.999	0.873	0.985	0.867	4.696	62
Carroll	1.007	0.990	0.994	0.979	0.981	4.951	27
Chickasaw	0.946	0.998	0.920	0.987	1.043	4.894	33
Choctaw	1.033	0.998	0.889	0.985	0.735	4.641	69
Claiborne	0.997	0.943	0.832	0.980	0.940	4.692	63
Clarke	0.975	0.991	0.963	0.974	0.948	4.851	39
Clay	0.998	0.979	1.036	0.970	0.885	4.867	37
Coahoma	0.910	0.976	0.896	0.907	0.886	4.575	73
Copiah	0.946	0.988	0.878	0.976	0.976	4.764	57
Covington	1.061	1.005	0.945	0.972	1.144	5.127	9
DeSoto	1.160	1.011	1.076	1.072	1.133	5.451	2
Forrest	1.045	1.003	1.028	0.995	1.025	5.096	11
Franklin	0.898	0.986	0.898	1.002	1.043	4.827	45
George	0.980	0.978	0.860	1.052	0.854	4.724	59
Greene	0.962	0.975	0.759	1.007	1.264	4.967	24
Grenada	0.995	1.004	0.942	0.972	1.036	4.948	29
Hancock	1.017	0.998	0.932	1.033	1.061	5.041	16
Harrison	1.022	1.003	0.986	1.041	1.020	5.072	12
Hinds	0.979	1.002	1.039	0.953	0.901	4.874	35
Holmes	0.888	0.948	0.750	0.930	0.984	4.500	76
Humphreys	0.979	0.953	0.842	0.930	0.802	4.506	75
Issaquena	0.966	0.946	0.490	0.997	0.480	3.879	81
Itawamba	0.918	1.007	0.918	0.998	1.047	4.887	34
Jackson	0.956	0.994	0.991	1.020	1.026	4.987	21
Jasper	1.047	0.985	0.985	0.994	0.789	4.801	49
Jefferson	0.779	0.895	0.875	0.935	0.940	4.424	78
Jefferson Davis	0.972	0.985	0.796	0.961	0.888	4.602	71
Jones	0.968	1.000	1.008	0.996	0.870	4.842	41
Kemper	0.734	0.974	0.774	0.967	0.307	3.757	82
Lafayette	1.123	1.010	1.113	1.029	1.104	5.378	3
Lamar	1.034	1.013	1.071	1.043	0.989	5.150	7
Lauderdale	0.966	0.999	1.003	0.950	0.906	4.824	46
Lawrence	0.910	0.986	0.915	0.996	0.984	4.791	50
Leake	1.022	0.999	0.831	1.005	0.994	4.850	40
Lee	1.039	1.011	1.108	1.012	1.074	5.244	5
Leflore	1.015	0.977	0.962	0.936	0.980	4.869	36
Lincoln	1.019	0.998	1.022	0.993	0.985	5.018	17
Lowndes	1.015	1.001	1.018	0.986	0.946	4.965	25
Madison	1.042	1.011	1.692	1.042	1.057	5.844	1
Marion	0.997	1.000	0.913	0.971	0.899	4.779	55

## INDEX OF ECONOMIC STABILITY

	Five Year Covered Employment Growth	Labor Force Employed 2019	Per Capita Income 2018	Five Year Total Population Growth	Five Year Sales Tax Growth	Composite Index	Rank
Marshall	1.230	0.997	0.855	0.987	1.064	5.133	8
Monroe	0.985	0.999	0.916	0.988	0.978	4.867	38
Montgomery	0.886	0.993	0.903	0.963	0.828	4.573	74
Neshoba	0.966	0.994	0.967	0.992	1.004	4.924	32
Newton	0.951	0.999	0.916	0.978	0.942	4.786	52
Noxubee	0.967	0.979	0.867	0.956	0.921	4.690	64
Oktibbeha	1.029	0.998	0.908	1.006	1.055	4.996	19
Panola	0.921	0.987	0.859	1.004	1.008	4.779	54
Pearl River	1.040	1.002	0.958	1.015	1.032	5.047	15
Perry	1.061	0.986	0.844	0.996	1.095	4.983	22
Pike	0.976	0.989	0.821	0.989	0.937	4.712	60
Pontotoc	1.005	1.012	0.872	1.047	1.114	5.049	14
Prentiss	1.016	1.005	0.813	0.992	0.958	4.784	53
Quitman	0.849	0.968	0.716	0.908	0.697	4.139	80
Rankin	1.017	1.016	1.180	1.043	1.045	5.301	4
Scott	0.970	1.010	0.848	0.993	0.967	4.789	51
Sharkey	0.945	0.965	0.848	0.951	0.977	4.685	65
Simpson	1.040	1.002	0.979	0.985	0.953	4.960	26
Smith	0.984	1.002	0.946	0.994	0.913	4.838	42
Stone	1.099	0.988	0.833	1.008	1.084	5.012	18
Sunflower	0.931	0.963	0.816	0.938	0.969	4.616	70
Tallahatchie	0.914	0.995	0.734	0.951	1.061	4.655	68
Tate	0.990	0.998	0.930	0.999	1.077	4.993	20
Tippah	0.973	1.004	0.897	1.004	1.052	4.929	30
Tishomingo	1.088	1.003	0.887	0.999	1.145	5.123	10
Tunica	0.837	0.991	0.857	0.942	0.859	4.486	77
Union	1.091	1.013	0.852	1.022	1.077	5.056	13
Walthall	0.898	0.980	0.839	0.982	0.886	4.586	72
Warren	0.929	0.993	1.046	0.960	1.000	4.929	31
Washington	0.918	0.978	0.993	0.919	0.871	4.679	66
Wayne	1.002	0.993	0.919	0.989	0.920	4.824	47
Webster	1.008	0.996	1.017	0.985	0.969	4.976	23
Wilkinson	0.915	0.949	0.777	0.953	0.746	4.341	79
Winston	1.078	0.993	0.945	0.977	0.829	4.821	48
Yalobusha	0.915	0.996	0.971	0.976	0.873	4.730	58
Yazoo	0.976	0.990	0.721	1.088	0.927	4.702	61

## METROPOLITAN STATISTICAL AREAS

G-B-P	0.998	0.999	0.981	1.033	1.025	5.036	3
HATTIESBURG	1.042	1.007	1.031	1.015	1.010	5.105	2
JACKSON	1.002	1.007	1.169	1.001	0.979	5.158	1

## WORKFORCE DEVELOPMENT AREAS

DELTA	0.925	0.978	0.895	0.940	0.941	4.678	4
MS PARTNERSHIP	1.053	1.005	0.980	1.013	1.050	5.101	1
SC MS WORKS	0.993	1.001	1.101	0.995	0.971	5.061	2
TWIN DISTRICTS	0.998	0.999	0.965	1.009	0.981	4.953	3

# SUMMARY & CONCLUSIONS

*Mississippi has remained  
positively stable over the  
past five years*

---

**M**ississippi's economy appears to be continuing its positive trajectory. Per capita income statewide has risen almost 10% over the five-year period between 2014 and 2018. Issaquena, the state's smallest county in population, had a per capita income rise of 24.1% over the same period with an additional forty-two counties posting gains of 10% or more. Despite a decline in sales tax collections over last year, total collections have risen 8.0% since 2015. Fifty-five counties recorded growth in sales taxes collected since 2015. Benton County posted the highest percent increase, 41.1%, over the past five years and Desoto County had the greatest net change since 2015 with more than \$39,660,000 collected.

A continued decrease in unemployment benefits paid in Mississippi also contributes to an optimistic forecast for the state overall. Mississippi had a decrease of 38.7% in payments made since 2015. Eighty-one out of the state's

eighty-two counties paid out fewer benefits. Twelve counties decreased payments by 50% or greater. Although the unemployment rate increased over the past year, the rate has decreased over the five-year period, Greene and Jefferson counties were the only two counties posting minor increases in their unemployment rates from 2015. The Health Care & Social Assistance and Accommodation & Food Services sectors had the largest gains over the five-year period. The Transportation & Warehousing and Manufacturing sectors showed continual growth for the same period.

The size of the civilian labor force in Mississippi grew by 10,800 individuals from 2015 to 2019, a positive sign. Thirty-seven counties posted increases in their labor force from 2015 to 2019. Desoto County recorded the greatest net change in labor force with Lafayette County following and posting the greatest percent change at 16.0%. Only

four counties had percent decreases over 10% unfortunately three of those counties also have populations of fewer than 8,500 residents, likewise, their number employed also decreased. As expected with the unemployment rate falling statewide over the five-year period so too did unemployed individuals (11,800) while employed individuals rose by 22,600, a promising sign.

An optimistic signal for the economy is the continued expansion of manufacturing, transportation and warehousing in the state. Population losses are certainly a concern, but with the addition of jobs in the state, this would likely stabilize or perhaps turn around. Even with the small rise this year, unemployment rates remain low and per capita income has increased yet again. Overall, looking at the five measures discussed in this publication, Mississippi has remained positively stable over the past five years and with a steady economy, a favorable future is to be expected.









# GLOSSARY

---

**Civilian Labor Force** – that proportion of the civilian noninstitutional population that is employed or actively seeking employment. The labor force is the sum of the number of employed and unemployed.

**Civilian Noninstitutional Population** – included are persons 16 years of age and older residing in the 50 states and the District of Columbia who are not inmates of institutions (for example, penal and mental facilities, homes for the aged), and who are not on active duty in the Armed Forces.

**Covered Employment** – the number of workers for firms registered under the Mississippi Employment Security Law who earned wages during the pay period including the twelfth of the month. State and local government is included but not federal government.

**Employed** – all persons who during the reference week, (a) did any work at all as paid employees, worked in their own business, profession, or on their own farm or worked 15 hours or more as unpaid workers in an enterprise operated by a member of the family, and (b) all those who were not working but who had jobs or businesses from which they were temporarily absent because of vacation, illness, bad weather, childcare problems, maternity or paternity leave, labor management dispute, job training, or other family or personal reasons, whether or not they were paid for the time off, or were seeking other jobs. Persons are counted only once even if they hold multiple jobs.

**Metropolitan Statistical Areas (MSAs)** – the general concept of an MSA is one of a large population nucleus, together with adjacent communities that have a high degree of economic and social integration with that nucleus. These are defined by the Office of Management and Budget as a standard for Federal agencies in the preparation and publication of statistics relating to metropolitan areas.

**Unemployed** – all persons who had no employment during the reference week, were available for work, except for temporary illness, and had made specific efforts to find employment during the 4-week period ending with the reference week. Persons who were waiting to be recalled to a job from which they had been laid off need not have been looking for work to be classified as unemployed. Persons that are classified as unemployed have not necessarily filed or would be eligible for unemployment benefits.

**Unemployment Rate** – the unemployment rate represents the number of unemployed as a percent of the civilian labor force.

**Workforce Development Areas (WDAs)** – these are state designated areas in which an appointed Workforce Development Board is charged with designing and managing a system that provides convenient access to services and program information for employers, jobseekers, and others in need of assistance. Multiple agencies and groups partner together to provide the services. Each board is employer led and demand driven. The state is divided into four such areas.

