

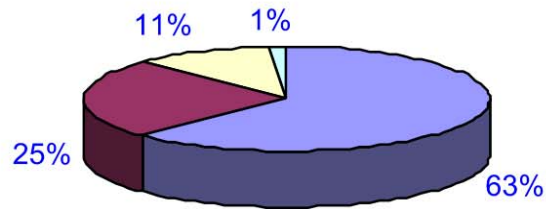


# Mississippi Department of Employment Security

PO BOX 1699 JACKSON MS 39215-1699

## Mississippi's Business Population 2008

**BUSINESS BIRTHS**  
by Type of Organization



## Births, Deaths & Changes in Ownership

Prepared by  
Labor Market Information  
**Department**

Look for our Guide to Labor Market Information On-line!  
<http://mdes.ms.gov>

MDES is an Equal  
Opportunity Employer

*Increasing Employment In Mississippi*

**World Wide Web:**  
<http://mdes.ms.gov>

**Electronic Mail:**  
[lmi-info@mdes.ms.gov](mailto:lmi-info@mdes.ms.gov)

## FOREWORD

This is the forty-second in a series of publications giving business population data for Mississippi by industry and by county for firms covered under the Mississippi Employment Security Law. The first release carried data for 1960 and 1961. Beginning with the 1972 issue, publication was shifted to an annual basis. Publications issued prior to 1972 covered two-year periods.

Information of this nature provides an indication of shifts in industrial patterns, showing the kinds of new businesses being established and the kinds which are declining in significance. Knowledge of these shifts, which affect employment opportunities, is necessary for accurate assessment of the economic health of an area and for understanding the workings of the labor market. Such knowledge leads to a more effective administration of the Employment Security Programs and is useful to groups concerned with industrial development in the state.

Beginning with the 2007 edition, the industrial codes used are those contained in the North American Industry Classification System (NAICS) Manual issued by the Executive Office of the President, Office of Management and Budget, 2007. In the 2002 through 2006 editions, the industrial codes used were from the NAICS, 2002 codes. Prior to the 2002 edition, the industrial codes used were from the Standard Industrial Classification (SIC) Manual. Because of extensive changes from SIC to NAICS, there will be no historical comparisons. Information about NAICS can be accessed at [www.census.gov](http://www.census.gov).

**September 2009**



## TABLE OF CONTENTS

Table 1 - Average Monthly Covered Employment, Total Annual Wages & Average Weekly Insured Unemployment	1
Table 2 - Average Monthly Covered Employment by NAICS Sector & Percent Change	2
Table 3 - Average Monthly Covered Employment & Percent Change for Selected Manufacturing Subsectors	3
Table 4 - Business Births & Deaths by NAICS Sector 2008	4
Table 5 - Business Births & Deaths by NAICS Sector 2007	5
Table 6 - Active Establishments & Business Births & Deaths by NAICS Sector & Subsector	6
Table 7 - Accession & Separation Rates by NAICS Sector	11
Table 8 - Active Establishments, Business Births & Deaths, & Accession & Separation Rates by County	12
Table 9 - Business Births & Deaths by Type of Organization	16
Table 10 - Business Deaths by Length of Life	17
Table 11 - Business Deaths by NAICS Sector & by Length of Life	18
Table 12 - Business Deaths by Length of Life & by Type of Organization	19
Table 13 - Active Establishments & Changes in Ownership by NAICS Sector	20
Table 14 - Changes in Ownership by Type of Organization	21
Table 15 - Changes in Ownership by Length of Life	22
Table 16 - Types of Business Organizations	23
Appendix	24
Table I - Size of Firm for Covered Employment for Fourth Quarter 2008	25
Table II - Business Births & Deaths by County & by Industry	28

**TABLE OF CONTENTS** (continued)

Table III - Business Deaths by Selected Manufacturing Subsectors & by Length of Life	31
Table IV - Business Deaths by County & by Length of Life	32
Table V - Changes in Ownership by County & by Industry	35
Table VI-A - Business Births by County & by Month	38
Table VI-B - Business Deaths by County & by Month	41
Table VII-A - Business Births by NAICS Sector & Subsector by Month	44
Table VII-B - Business Deaths by NAICS Sector & Subsector by Month	48
Definition of Terms	52

**TABLE 1**

AVERAGE MONTHLY COVERED EMPLOYMENT, TOTAL ANNUAL WAGES  
AND AVERAGE WEEKLY INSURED UNEMPLOYMENT

CALENDAR YEAR	AVERAGE MONTHLY COVERED EMPLOYMENT	TOTAL ANNUAL WAGES	AVERAGE WEEKLY COVERED UNEMPLOYMENT
2006	1,096,282	\$33,547,818,734	20,882
2007	1,109,355	\$35,180,696,345	18,654
2008	1,104,534	\$36,350,794,041	24,217

**TABLE 2**

AVERAGE MONTHLY COVERED EMPLOYMENT BY NAICS SECTOR  
 IN 2007 AND 2008  
 AND PERCENT CHANGE FROM 2007 TO 2008

NAICS SECTOR	AVERAGE MONTHLY COVERED EMPLOYMENT		PERCENT CHANGE FROM 2007 TO 2008
	2008	2007	
STATE TOTAL	1,104,534	1,109,355	-0.43
AGRI., FORESTRY, FISHING, HUNTING	13,522	14,259	-5.17
MINING	6,518	6,178	5.50
UTILITIES	8,900	8,829	0.80
CONSTRUCTION	64,147	62,381	2.83
MANUFACTURING	160,041	169,657	-5.67
WHOLESALE TRADE	36,491	36,954	-1.25
RETAIL TRADE	139,535	141,865	-1.64
TRANSPORTATION & WAREHOUSING	39,957	40,006	-0.12
INFORMATION	14,954	14,867	0.59
FINANCE & INSURANCE	33,935	34,182	-0.72
REAL ESTATE & RENTAL & LEASING	13,024	13,063	-0.30
PROFESSIONAL & TECHNICAL SERVICES	34,274	35,112	-2.39
MGMT. OF COMPANIES & ENTERPRISES	9,855	9,762	0.95
ADMINISTRATION & WASTE SERVICES	52,330	51,869	0.89
EDUCATIONAL SERVICES	112,217	110,085	1.94
HEALTH CARE & SOCIAL ASSISTANCE	156,427	152,669	2.46
ARTS, ENTERTAINMENT & RECREATION	13,855	14,082	-1.61
ACCOMMODATION & FOOD SERVICES	115,583	115,513	0.06
OTHER SERVICES	23,645	23,865	-0.92
PUBLIC ADMINISTRATION	55,326	54,157	2.16
NONCLASSIFIABLE	0	0	0.00

**TABLE 3**

AVERAGE MONTHLY COVERED EMPLOYMENT IN 2007 AND 2008  
AND PERCENT CHANGE FROM 2007 TO 2008  
FOR SELECTED MANUFACTURING SUBSECTORS

SELECTED MANUFACTURING SUBSECTORS	AVERAGE MONTHLY COVERED EMPLOYMENT		PERCENT CHANGE FROM 2007 TO 2008
	2008	2007	
311 FOOD	24,386	24,841	-1.83
313 TEXTILE MILLS	1,381	1,211	14.04
314 TEXTILE PRODUCT MILLS	1,225	1,239	-1.13
315 APPAREL	2,763	3,104	-10.99
321 WOOD PRODUCT	13,025	14,175	-8.11
322 PAPER	4,762	4,977	-4.32
325 CHEMICAL	6,981	7,155	-2.43
326 PLASTICS & RUBBER PRODUCT	6,966	7,955	-12.43
327 NONMETALLIC MINERAL PRODUCT	4,477	4,832	-7.35
331 PRIMARY METAL	3,337	2,986	11.75
332 FABRICATED METAL PRODUCT	11,004	11,056	-0.47
333 MACHINERY	12,035	12,494	-3.67
335 ELECTRICAL EQUIPMENT & APPLIANCE	9,033	10,147	-10.98
336 TRANSPORTATION EQUIPMENT	26,178	27,265	-3.99
337 FURNITURE & RELATED PRODUCT	20,483	23,635	-13.34



**TABLE 4**

BUSINESS BIRTHS AND DEATHS  
BY NAICS SECTOR  
2008

NAICS SECTOR	BIRTHS		DEATHS		NET GAIN OR LOSS	RATIO BIRTHS TO DEATHS
	NO.	PERCENT OF TOTAL	NO.	PERCENT OF TOTAL		
TOTAL	5,781	100.0	4,485	100.0	1,296	1.3
AGRI., FORESTRY, FISHING, HUNTING	90	1.6	118	2.6	-28	0.8
MINING	75	1.3	23	0.5	52	3.3
UTILITIES	7	0.1	7	0.2	0	1.0
CONSTRUCTION	854	14.8	672	15.0	182	1.3
MANUFACTURING	133	2.3	168	3.7	-35	0.8
WHOLESALE TRADE	478	8.3	268	6.0	210	1.8
RETAIL TRADE	635	11.0	643	14.3	-8	1.0
TRANSPORTATION & WAREHOUSING	316	5.5	295	6.6	21	1.1
INFORMATION	50	0.9	31	0.7	19	1.6
FINANCE & INSURANCE	235	4.1	224	5.0	11	1.0
REAL ESTATE & RENTAL & LEASING	201	3.5	171	3.8	30	1.2
PROFESSIONAL & TECHNICAL SERVICES	673	11.6	392	8.7	281	1.7
MGMT. OF COMPANIES & ENTERPRISES	35	0.6	22	0.5	13	1.6
ADMINISTRATION & WASTE SERVICES	459	7.9	283	6.3	176	1.6
EDUCATIONAL SERVICES	83	1.4	29	0.6	54	2.9
HEALTH CARE & SOCIAL ASSISTANCE	395	6.8	251	5.6	144	1.6
ARTS, ENTERTAINMENT & RECREATION	86	1.5	59	1.3	27	1.5
ACCOMMODATION & FOOD SERVICES	455	7.9	347	7.7	108	1.3
OTHER SERVICES	497	8.6	445	9.9	52	1.1
PUBLIC ADMINISTRATION	5	0.1	2	0.0	3	2.5
NONCLASSIFIABLE	19	0.3	35	0.8	-16	0.5

**TABLE 5**

**BUSINESS BIRTHS AND DEATHS  
BY NAICS SECTOR  
2007**

NAICS SECTOR	BIRTHS		DEATHS		NET GAIN OR LOSS	RATIO BIRTHS TO DEATHS
	NO.	PERCENT OF TOTAL	NO.	PERCENT OF TOTAL		
TOTAL	6,878	100.0	4,933	100.0	1,945	1.4
AGRI., FORESTRY, FISHING, HUNTING	121	1.8	146	3.0	-25	0.8
MINING	84	1.2	28	0.6	56	3.0
UTILITIES	7	0.1	5	0.1	2	1.4
CONSTRUCTION	1,030	15.0	688	13.9	342	1.5
MANUFACTURING	187	2.7	182	3.7	5	1.0
WHOLESALE TRADE	539	7.8	321	6.5	218	1.7
RETAIL TRADE	775	11.3	705	14.3	70	1.1
TRANSPORTATION & WAREHOUSING	375	5.5	317	6.4	58	1.2
INFORMATION	74	1.1	35	0.7	39	2.1
FINANCE & INSURANCE	343	5.0	220	4.5	123	1.6
REAL ESTATE & RENTAL & LEASING	261	3.8	148	3.0	113	1.8
PROFESSIONAL & TECHNICAL SERVICES	774	11.3	425	8.6	349	1.8
MGMT. OF COMPANIES & ENTERPRISES	37	0.5	13	0.3	24	2.8
ADMINISTRATION & WASTE SERVICES	545	7.9	327	6.6	218	1.7
EDUCATIONAL SERVICES	64	0.9	39	0.8	25	1.6
HEALTH CARE & SOCIAL ASSISTANCE	433	6.3	275	5.6	158	1.6
ARTS, ENTERTAINMENT & RECREATION	92	1.3	52	1.1	40	1.8
ACCOMMODATION & FOOD SERVICES	546	7.9	391	7.9	155	1.4
OTHER SERVICES	554	8.1	554	11.2	0	1.0
PUBLIC ADMINISTRATION	8	0.1	4	0.1	4	2.0
NONCLASSIFIABLE	29	0.4	58	1.2	-29	0.5

**TABLE 6**

ACTIVE ESTABLISHMENTS DURING THE FOURTH QUARTER 2007 AND  
BUSINESS BIRTHS AND DEATHS BY NAICS SECTOR & SUBSECTOR  
2008

NAICS SECTOR & SUBSECTOR	ACTIVE ESTABLISHMENTS FOURTH QUARTER 2007	2008		
		BIRTHS	DEATHS	NET GAIN OR LOSS
TOTAL	68,919	5,781	4,485	1,296
AGRI., FORESTRY, FISHING, HUNTING	1,840	90	118	-28
111 CROP PRODUCTION	592	30	17	13
112 ANIMAL PRODUCTION	190	10	16	-6
113 FORESTRY & LOGGING	574	23	62	-39
114 FISHING HUNTING TRAP	14	0	1	-1
115 AGR & FRSTRY SUPPORT	470	27	22	5
MINING	460	75	23	52
211 OIL & GAS EXTRACTION	82	5	3	2
212 MINING EXCPT OIL GAS	63	5	0	5
213 SUPPORT FOR MINING	315	65	20	45
UTILITIES	561	7	7	0
221 UTILITIES	561	7	7	0
CONSTRUCTION	6,576	854	672	182
236 CONSTR. OF BUILDINGS	1,901	259	241	18
237 HVY & CIVIL ENG CONS	842	101	71	30
238 SPECIALTY TR CONTR.	3,833	494	360	134
MANUFACTURING	2,874	133	168	-35
311 FOOD MANUFACTURING	194	8	11	-3
312 BEVG. & TOBACCO MFG.	34	2	2	0
313 TEXTILE MILLS	29	1	1	0
314 TEXTILE PRODUCT MILL	73	6	5	1
315 APPAREL MFG.	50	1	1	0
316 LEATHER & ALLIED PRD	6	1	0	1
321 WOOD PRODUCT MFG.	315	7	15	-8
322 PAPER MFG.	68	2	3	-1
323 PRINTING & SUPPORT	192	5	13	-8
324 PETROL & COAL PROD	37	1	1	0

**TABLE 6**

ACTIVE ESTABLISHMENTS DURING THE FOURTH QUARTER 2007 AND  
BUSINESS BIRTHS AND DEATHS BY NAICS SECTOR & SUBSECTOR  
2008

NAICS SECTOR & SUBSECTOR	ACTIVE ESTABLISHMENTS FOURTH QUARTER 2007	2008		
		BIRTHS	DEATHS	NET GAIN OR LOSS
325 CHEMICAL MFG.	148	10	6	4
326 PLASTICS & RUBBER	139	3	11	-8
327 NONMETAL MINERAL MFG	187	10	10	0
331 PRIMARY METAL MFG.	43	1	2	-1
332 FAB. METAL PRODUCTS	393	20	16	4
333 MACHINERY MFG.	177	10	4	6
334 COMPUTER & ELEC. PRD	37	2	3	-1
335 ELEC. EQUIP. & APPL.	49	3	2	1
336 TRANSP. EQUIPMENT	150	13	3	10
337 FURNITURE & REL PROD	337	17	40	-23
339 MISC.MANUFACTURING	216	10	19	-9
WHOLESALE TRADE	4,813	478	268	210
423 DURABLE GDS. WHLSALE	1,894	118	74	44
424 NONDURABLE WHLSALE	1,078	57	47	10
425 ELECTR. AGTS & BROKR	1,841	303	147	156
RETAIL TRADE	11,490	635	643	-8
441 MTR VEHICLE & PARTS	1,575	62	84	-22
442 FURNITURE STORES	638	47	54	-7
443 ELECT. & APPL. STORE	442	18	29	-11
444 BLDG MTL & GARDEN	915	32	35	-3
445 FOOD & BEVERAGE STOR	1,117	78	64	14
446 HEALTH & PRSNL CARE	877	38	26	12
447 GASOLINE STATIONS	2,018	125	113	12
448 CLOTHING & ACCESS.	1,199	80	69	11
451 SPRT GDS HOBBY BOOKS	483	29	38	-9
452 GENL. MERCHANDISE	795	8	13	-5
453 MISC. STORE RETAIL	1,153	93	100	-7
454 NONSTORE RETAILERS	278	25	18	7
TRANSPORTATION & WAREHOUSING	2,630	316	295	21

**TABLE 6**

ACTIVE ESTABLISHMENTS DURING THE FOURTH QUARTER 2007 AND  
BUSINESS BIRTHS AND DEATHS BY NAICS SECTOR & SUBSECTOR  
2008

NAICS SECTOR & SUBSECTOR	ACTIVE ESTABLISHMENTS FOURTH QUARTER 2007	2008		
		BIRTHS	DEATHS	NET GAIN OR LOSS
481 AIR TRANSPORTATION	54	6	5	1
482 RAIL TRANSPORTATION	1	0	0	0
483 WATER TRANSPORTATION	17	2	0	2
484 TRUCK TRANSPORTATION	1,709	203	225	-22
485 TRANSIT & GRND. TRAN	94	14	10	4
486 PIPELINE TRANSPORT	84	1	2	-1
487 SCENIC & SIGHTSEEING	14	1	0	1
488 TRANSP. SUPPORT	335	37	32	5
491 POSTAL SERVICE	7	2	2	0
492 COURIERS & MESSENGR	116	22	9	13
493 WAREHOUSING & STORAG	199	28	10	18
INFORMATION	1,201	50	31	19
511 PUBLISH EXCP INTERNT	209	10	7	3
512 MOTION PIC & SOUND	89	10	8	2
515 BROADCASTING	139	6	7	-1
516 INTERNET BRDCST PUBLS	0	1	1	0
517 TELECOMMUNICATIONS	504	14	6	8
518 ISPS SEARCH DATA PRC	44	4	1	3
519 OTHER INFO SERVICES	216	5	1	4
FINANCE & INSURANCE	4,768	235	224	11
521 MONETARY AUTHORITIES	2	0	0	0
522 CREDIT INTERMEDIATION	2,701	63	105	-42
523 FINANCIAL INVESTMENT	300	28	23	5
524 INSURANCE CARRIERS	1,714	118	76	42
525 FUNDS, TRUSTS, & OTH	51	26	20	6
REAL ESTATE & RENTAL & LEASING	2,859	201	171	30
531 REAL ESTATE	2,201	175	149	26
532 RENTAL & LEASING SRV	635	24	20	4
533 LESSORS INTANGIBLE	23	2	2	0

**TABLE 6**

ACTIVE ESTABLISHMENTS DURING THE FOURTH QUARTER 2007 AND  
BUSINESS BIRTHS AND DEATHS BY NAICS SECTOR & SUBSECTOR  
2008

NAICS SECTOR & SUBSECTOR	ACTIVE ESTABLISHMENTS FOURTH QUARTER 2007	2008		
		BIRTHS	DEATHS	NET GAIN OR LOSS
PROFESSIONAL & TECHNICAL SERVICES	5,789	673	392	281
541 PROFESNL & TECH SERV	5,789	673	392	281
MGMT. OF COMPANIES & ENTERPRISES	409	35	22	13
551 MGMT OF COMPANIES	409	35	22	13
ADMINISTRATIVE & WASTE SERVICES	3,290	459	283	176
561 ADMIN. & SUPPORT	3,060	426	255	171
562 WASTE MGMT.	230	33	28	5
EDUCATIONAL SERVICES	1,140	83	29	54
611 EDUCATIONAL SERVICES	1,140	83	29	54
HEALTH CARE & SOCIAL ASSISTANCE	6,471	395	251	144
621 AMBULATORY HEALTH SV	4,051	256	160	96
622 HOSPITALS	124	7	4	3
623 NURSING & RESID CARE	428	22	16	6
624 SOCIAL ASSISTANCE	1,868	110	71	39
ARTS, ENTERTAINMENT & RECREATION	721	86	59	27
711 PERF. ARTS & SPORTS	136	26	15	11
712 MUSEUMS, PARKS HIST.	44	2	0	2
713 GAMBLING, REC & AMUS	541	58	44	14
ACCOMMODATION & FOOD SERVICES	4,861	455	347	108
721 ACCOMMODATION	705	59	24	35
722 FOOD SRVC & DRINKING	4,156	396	323	73
OTHER SERVICES	5,206	497	445	52
811 REPAIR & MAINT.	2,028	169	133	36
812 PERSONAL & LAUNDRY	1,178	98	74	24
813 MEMBERSHIP ASSNS.	708	46	29	17
814 PRIVATE HOUSEHOLDS	1,292	184	209	-25
PUBLIC ADMINISTRATION	959	5	2	3
921 EXEC. LEG. GNL. GOVT	372	1	1	0
922 JUSTICE PBL ORDER	105	3	0	3

**TABLE 6**ACTIVE ESTABLISHMENTS DURING THE FOURTH QUARTER 2007 AND  
BUSINESS BIRTHS AND DEATHS BY NAICS SECTOR & SUBSECTOR  
2008

NAICS SECTOR & SUBSECTOR	ACTIVE ESTABLISHMENTS FOURTH QUARTER 2007	2008		
		BIRTHS	DEATHS	NET GAIN OR LOSS
923 ADMIN. HUMAN RESOURC	205	1	0	1
924 ADMIN. ENVRION. PGM	146	0	1	-1
925 COMM. & HOUSING ADMN	6	0	0	0
926 ADMIN. ECONOMIC PGMS	118	0	0	0
928 NATL SECURITY & INTL	7	0	0	0
NONCLASSIFIABLE	1	19	35	-16
999 NONCLASSIFIABLE	1	19	35	-16

**TABLE 7**

ACCESSION AND SEPARATION RATES\*  
 BY NAICS SECTOR  
 2008

NAICS SECTOR	ACTIVE ESTABLISHMENTS 4TH QTR. 2007	2008	
		ACCESSION RATE	SEPARATION RATE
TOTAL	68,919	8.4	6.5
AGRI., FORESTRY, FISHING, HUNTING	1,840	4.9	6.4
MINING	460	16.3	5.0
UTILITIES	561	1.2	1.2
CONSTRUCTION	6,576	13.0	10.2
MANUFACTURING	2,874	4.6	5.8
WHOLESALE TRADE	4,813	9.9	5.6
RETAIL TRADE	11,490	5.5	5.6
TRANSPORTATION & WAREHOUSING	2,630	12.0	11.2
INFORMATION	1,201	4.2	2.6
FINANCE & INSURANCE	4,768	4.9	4.7
REAL ESTATE & RENTAL & LEASING	2,859	7.0	6.0
PROFESSIONAL & TECHNICAL SERVICES	5,789	11.6	6.8
MGMT. OF COMPANIES & ENTERPRISES	409	8.6	5.4
ADMINISTRATION & WASTE SERVICES	3,290	14.0	8.6
EDUCATIONAL SERVICES	1,140	7.3	2.5
HEALTH CARE & SOCIAL ASSISTANCE	6,471	6.1	3.9
ARTS, ENTERTAINMENT & RECREATION	721	11.9	8.2
ACCOMMODATION & FOOD SERVICES	4,861	9.4	7.1
OTHER SERVICES	5,206	9.5	8.5
PUBLIC ADMINISTRATION	959	0.5	0.2
NONCLASSIFIABLE	1	0.0	0.0

\* BASED ON THE NUMBER OF ACTIVE ESTABLISHMENTS AS OF THE FOURTH QUARTER 2007



**TABLE 8**

ACTIVE ESTABLISHMENTS THE FOURTH QUARTER 2007  
 BUSINESS BIRTHS AND DEATHS,  
 AND ACCESSION AND SEPARATION RATES  
 BY COUNTY  
 2008

COUNTY	ACTIVE ESTAB. 4TH QTR. 2007	2008				
		BIRTHS	DEATHS	NET GAIN OR LOSS	%	
					ACCESSION RATE	SEPARATION RATE
TOTAL	68,919	5,781	4,485	1296	8.3	6.5
ADAMS	956	49	66	-17	5.1	6.9
ALCORN	850	42	42	0	4.9	4.9
AMITE	213	15	10	5	7.0	4.6
ATTALA	415	19	36	-17	4.5	8.6
BENTON	88	5	8	-3	5.6	9.0
BOLIVAR	819	36	39	-3	4.3	4.7
CALHOUN	312	17	22	-5	5.4	7.0
CARROLL	128	9	7	2	7.0	5.4
CHICKASAW	379	22	24	-2	5.8	6.3
CHOCTAW	153	9	10	-1	5.8	6.5
CLAIBORNE	150	4	8	-4	2.6	5.3
CLARKE	251	19	21	-2	7.5	8.3
CLAY	379	19	23	-4	5.0	6.0
COAHOMA	645	30	28	2	4.6	4.3
COPIAH	460	20	33	-13	4.3	7.1
COVINGTON	337	21	23	-2	6.2	6.8
DESOTO	2,485	237	193	44	9.5	7.7
FORREST	1,949	136	137	-1	6.9	7.0
FRANKLIN	133	5	8	-3	3.7	6.0
GEORGE	347	36	21	15	10.3	6.0
GREENE	155	13	11	2	8.3	7.0
GRENADA	584	31	30	1	5.3	5.1
HANCOCK	794	99	70	29	12.4	8.8
HARRISON	4,484	375	290	85	8.3	6.4
HINDS	6,322	356	321	35	5.6	5.0

**TABLE 8**

ACTIVE ESTABLISHMENTS THE FOURTH QUARTER 2007  
 BUSINESS BIRTHS AND DEATHS,  
 AND ACCESSION AND SEPARATION RATES  
 BY COUNTY  
 2008

COUNTY	ACTIVE ESTAB. 4TH QTR. 2007	2008				
		BIRTHS	DEATHS	NET GAIN OR LOSS	%	
					ACCESSION RATE	SEPARATION RATE
HOLMES	320	10	19	-9	3.1	5.9
HUMPHREYS	243	8	21	-13	3.2	8.6
ISSAQUENA	43	0	2	-2	0.0	4.6
ITAWAMBA	353	16	20	-4	4.5	5.6
JACKSON	2,430	194	170	24	7.9	6.9
JASPER	258	18	15	3	6.9	5.8
JEFFERSON	83	3	2	1	3.6	2.4
JEFF. DAVIS	180	14	14	0	7.7	7.7
JONES	1,461	69	105	-36	4.7	7.1
KEMPER	138	5	9	-4	3.6	6.5
LAFAYETTE	1,083	102	96	6	9.4	8.8
LAMAR	1,245	109	90	19	8.7	7.2
LAUDERDALE	1,998	112	85	27	5.6	4.2
LAWRENCE	214	15	15	0	7.0	7.0
LEAKE	311	24	17	7	7.7	5.4
LEE	2,460	160	107	53	6.5	4.3
LEFLORE	877	34	42	-8	3.8	4.7
LINCOLN	777	37	40	-3	4.7	5.1
LOWNDES	1,599	94	82	12	5.8	5.1
MADISON	2,692	260	134	126	9.6	4.9
MARION	611	53	38	15	8.6	6.2
MARSHALL	423	27	32	-5	6.3	7.5
MONROE	685	40	27	13	5.8	3.9
MONTGOMERY	241	17	12	5	7.0	4.9
NESHOBA	543	30	25	5	5.5	4.6
NEWTON	355	22	15	7	6.1	4.2
NOXUBEE	224	6	15	-9	2.6	6.6

**TABLE 8**

ACTIVE ESTABLISHMENTS THE FOURTH QUARTER 2007  
 BUSINESS BIRTHS AND DEATHS,  
 AND ACCESSION AND SEPARATION RATES  
 BY COUNTY  
 2008

COUNTY	ACTIVE ESTAB. 4TH QTR. 2007	2008				
		BIRTHS	DEATHS	NET GAIN OR LOSS	%	
					ACCESSION RATE	SEPARATION RATE
OKTIBBEHA	839	59	49	10	7.0	5.8
PANOLA	668	41	40	1	6.1	5.9
PEARL RIVER	869	81	83	-2	9.3	9.5
PERRY	179	10	9	1	5.5	5.0
PIKE	1,073	70	70	0	6.5	6.5
PONTOTOC	455	32	26	6	7.0	5.7
PRENTISS	485	29	13	16	5.9	2.6
QUITMAN	160	5	4	1	3.1	2.5
RANKIN	3,419	277	200	77	8.1	5.8
SCOTT	530	26	25	1	4.9	4.7
SHARKEY	166	4	4	0	2.4	2.4
SIMPSON	455	27	23	4	5.9	5.0
SMITH	206	14	18	-4	6.7	8.7
STONE	295	30	23	7	10.1	7.7
SUNFLOWER	569	37	28	9	6.5	4.9
TALLAHATCHIE	238	12	10	2	5.0	4.2
TATE	389	24	21	3	6.1	5.3
TIPPAH	376	12	15	-3	3.1	3.9
TISHOMINGO	394	24	15	9	6.0	3.8
TUNICA	303	22	15	7	7.2	4.9
UNION	455	31	17	14	6.8	3.7
WALTHALL	250	9	9	0	3.6	3.6
WARREN	1,199	65	84	-19	5.4	7.0
WASHINGTON	1,424	71	69	2	4.9	4.8
WAYNE	416	24	31	-7	5.7	7.4
WEBSTER	191	6	5	1	3.1	2.6
WILKINSON	161	12	3	9	7.4	1.8

**TABLE 8**

ACTIVE ESTABLISHMENTS THE FOURTH QUARTER 2007  
BUSINESS BIRTHS AND DEATHS,  
AND ACCESSION AND SEPARATION RATES  
BY COUNTY  
2008

COUNTY	ACTIVE ESTAB. 4TH QTR. 2007	2008				
		BIRTHS	DEATHS	NET GAIN OR LOSS	%	
					ACCESSION RATE	SEPARATION RATE
WINSTON	397	15	21	-6	3.7	5.2
YALOBUSHA	203	12	10	2	5.9	4.9
YAZOO	483	29	35	-6	6.0	7.2
UNCLASSIFIED	6,037	1,568	780	788	25.9	12.9

**TABLE 9**BUSINESS BIRTHS AND DEATHS  
BY TYPE OF ORGANIZATION  
2008

TYPE OF ORGANIZATION	BIRTHS		DEATHS		NET GAIN OR LOSS
	NO.	PERCENT OF TOTAL	NO.	PERCENT OF TOTAL	
TOTAL	5,781	100.0	4,485	100.0	1296
CORPORATION	3,613	62.5	2,591	57.8	1022
INDIVIDUAL OWNERSHIP	1,444	25.0	1,383	30.8	61
PARTNERSHIP	649	11.2	442	9.9	207
OTHERS	75	1.3	69	1.5	6

**TABLE 10**

BUSINESS DEATHS, BY LENGTH OF LIFE  
2008

LENGTH OF LIFE	BUSINESS DEATHS	
	NO.	PERCENT OF TOTAL
TOTAL	4,485	100.0
LESS THAN 1 YEAR	1,301	29.0
1 YEAR, LESS THAN 2	781	17.4
2 YEARS, LESS THAN 3	466	10.4
3 YEARS, LESS THAN 4	339	7.6
4 YEARS, LESS THAN 5	241	5.4
5 YEARS, LESS THAN 6	165	3.7
6 YEARS, LESS THAN 10	453	10.1
10 YEARS AND OVER	739	16.5

TABLE 11

BUSINESS DEATHS, BY NAICS SECTOR AND BY LENGTH OF LIFE  
2008

NAICS SECTOR	DEATHS		LENGTH OF LIFE															
			LESS THAN 1 YEAR		1 YEAR LESS THAN 2		2 YEARS, LESS THAN 3		3 YEARS, LESS THAN 4		4 YEARS, LESS THAN 5		5 YEARS, LESS THAN 6		6 YEARS, LESS THAN 10		10 YEARS, AND OVER	
	NO.	% OF TOTAL	NO.	% OF TOTAL	NO.	% OF TOTAL	NO.	% OF TOTAL	NO.	% OF TOTAL	NO.	% OF TOTAL	NO.	% OF TOTAL	NO.	% OF TOTAL	NO.	% OF TOTAL
TOTAL	4,485	100.0	1,301	29.0	781	17.4	466	10.4	339	7.6	241	5.4	165	3.7	453	10.1	739	16.5
AGRI,ETC	118	100.0	15	12.7	14	11.9	9	7.6	10	8.5	4	3.4	5	4.2	16	13.6	45	38.1
MINING	23	100.0	14	60.9	1	4.3	4	17.4	1	4.3	1	4.3	0	0.0	1	4.3	1	4.3
UTILITIES	7	100.0	0	0.0	1	14.3	0	0.0	0	0.0	1	14.3	0	0.0	1	14.3	4	57.1
CONSTR	672	100.0	226	33.6	166	24.7	55	8.2	52	7.7	25	3.7	11	1.6	57	8.5	80	11.9
MFG	168	100.0	33	19.6	27	16.1	12	7.1	3	1.8	10	6.0	7	4.2	22	13.1	54	32.1
WH.TRADE	268	100.0	74	27.6	45	16.8	23	8.6	26	9.7	14	5.2	13	4.9	38	14.2	35	13.1
RE.TRADE	643	100.0	140	21.8	109	17.0	87	13.5	55	8.6	32	5.0	23	3.6	70	10.9	127	19.8
TRN WHS	295	100.0	94	31.9	52	17.6	35	11.9	25	8.5	20	6.8	13	4.4	23	7.8	33	11.2
INFO	31	100.0	14	45.2	5	16.1	5	16.1	0	0.0	1	3.2	2	6.5	1	3.2	3	9.7
FIN,INS	224	100.0	67	29.9	31	13.8	24	10.7	19	8.5	20	8.9	9	4.0	28	12.5	26	11.6
REAL EST	173	100.0	45	26.0	22	12.7	14	8.1	4	2.3	10	5.8	9	5.2	21	12.1	48	27.7
PRO TECH	392	100.0	130	33.2	57	14.5	53	13.5	33	8.4	21	5.4	15	3.8	27	6.9	56	14.3
CO MGMT	22	100.0	9	40.9	4	18.2	4	18.2	1	4.5	0	0.0	2	9.1	0	0.0	2	9.1
ADM WAST	283	100.0	98	34.6	55	19.4	36	12.7	14	4.9	12	4.2	14	4.9	24	8.5	30	10.6
EDU SVCS	29	100.0	9	31.0	3	10.3	3	10.3	1	3.4	5	17.2	2	6.9	1	3.4	5	17.2
HLTH CAR	251	100.0	58	23.1	30	12.0	19	7.6	23	9.2	16	6.4	15	6.0	36	14.3	54	21.5
ARTS ENT	59	100.0	15	25.4	10	16.9	9	15.3	5	8.5	1	1.7	4	6.8	6	10.2	9	15.3
ACCOMMOD	347	100.0	126	36.3	83	23.9	34	9.8	31	8.9	16	4.6	5	1.4	23	6.6	29	8.4
OTH SERV	480	100.0	134	27.9	66	13.8	40	8.3	36	7.5	32	6.7	16	3.3	58	12.1	98	20.4
PUB.AMIN	0	100.0	0	0.0	0	0.0	0	0.0	0	0.0	0	0.0	0	0.0	0	0.0	0	0.0
NONCLASS	0	100.0	0	0.0	0	0.0	0	0.0	0	0.0	0	0.0	0	0.0	0	0.0	0	0.0

**TABLE 12**

**BUSINESS DEATHS BY LENGTH OF LIFE AND BY TYPE OF ORGANIZATION  
2008**

TYPE OF ORGANIZATION	DEATHS		LENGTH OF LIFE															
			LESS THAN 1 YEAR		1 YEAR LESS THAN 2		2 YEARS, LESS THAN 3		3 YEARS, LESS THAN 4		4 YEARS, LESS THAN 5		5 YEARS, LESS THAN 6		6 YEARS, LESS THAN 10		10 YEARS, AND OVER	
	NO.	% OF TOTAL	NO.	% OF TOTAL	NO.	% OF TOTAL	NO.	% OF TOTAL	NO.	% OF TOTAL	NO.	% OF TOTAL	NO.	% OF TOTAL	NO.	% OF TOTAL	NO.	% OF TOTAL
TOTAL	4,485	100.0	1,301	29.0	781	17.4	466	10.4	339	7.6	241	5.4	165	3.7	453	10.1	739	16.5
CORP.	2,591	100.0	748	28.9	424	16.4	261	10.1	196	7.6	150	5.8	96	3.7	274	10.6	442	17.1
IND. OWNR	1,383	100.0	398	28.8	239	17.3	149	10.8	107	7.7	68	4.9	44	3.2	131	9.5	247	17.9
PART.	442	100.0	129	29.2	108	24.4	49	11.1	29	6.6	23	5.2	22	5.0	45	10.2	37	8.4
OTHER	69	100.0	26	37.7	10	14.5	7	10.1	7	10.1	0	0.0	3	4.3	3	4.3	13	18.8



**TABLE 13**

ACTIVE ESTABLISHMENTS DURING THE FOURTH QUARTER 2007  
AND CHANGES IN OWNERSHIP BY NAICS SECTOR  
2008

NAICS SECTOR	ACTIVE ESTAB. DURING		CHANGES IN OWNERSHIP		
	4TH QTR 2007		2008		
	NO.	% OF TOTAL	NO.	% OF TOTAL	RATIO % TO NO. ESTAB. 4TH QTR. 2007
TOTAL	68,919	100.0	1,396	100.0	2.0
AGRICULTURE, ECT.	1,840	2.7	19	1.4	1.0
MINING	460	0.7	12	0.9	2.6
UTILITIES	561	0.8	3	0.2	0.5
CONSTRUCTION	6,576	9.5	92	6.6	1.4
MANUFACTURING	2,874	4.2	61	4.4	2.1
WHOLESALE TRADE	4,813	7.0	128	9.2	2.7
RETAIL TRADE	11,490	16.7	323	23.1	2.8
TRANSP & WAREHOUSING	2,630	3.8	37	2.7	1.4
INFORMATION	1,201	1.7	23	1.6	1.9
FINANCE & INSURANCE	4,768	6.9	83	5.9	1.7
REAL ESTATE & RENTAL	2,859	4.1	41	2.9	1.4
PROFESSIONAL & TECH	5,789	8.4	101	7.2	1.7
MGMT. OF COMPANIES	409	0.6	3	0.2	0.7
ADMIN. & WASTE SERV	3,290	4.8	69	4.9	2.1
EDUCATIONAL SERVICES	1,140	1.7	4	0.3	0.4
HEALTH CARE & SOCIAL	6,471	9.4	107	7.7	1.7
ARTS, ENT. & RECREAT	721	1.0	21	1.5	2.9
ACCOMMODATION & FOOD	4,861	7.1	154	11.0	3.2
OTHER SERVICES	5,206	7.6	103	7.4	2.0
PUBLIC ADMINISTRATION	959	1.4	0	0.0	0.0
NONCLASSIFIABLE	1	0.0	12	0.9	0.0

**TABLE 14**

CHANGES IN OWNERSHIP  
BY TYPE OF ORGANIZATION  
2008

TYPE OF ORGANIZATION	CHANGES IN OWNERSHIP	
	NUMBER	PERCENT OF TOTAL
TOTAL	1,396	100.0
CORPORATION	729	52.2
INDIVIDUAL OWNERSHIP	461	33.0
PARTNERSHIP	187	13.4
OTHERS	19	1.4

**TABLE 15**

CHANGES IN OWNERSHIP  
BY LENGTH OF LIFE  
2008

LENGTH OF LIFE	CHANGES IN OWNERSHIP	
	NUMBER	PERCENT OF TOTAL
TOTAL	1,396	100.0
LESS THAN 1 YEAR	156	11.2
1 YEAR, LESS THAN 2	155	11.1
2 YEARS, LESS THAN 3	146	10.5
3 YEARS, LESS THAN 4	125	9.0
4 YEARS, LESS THAN 5	91	6.5
5 YEARS, LESS THAN 6	79	5.7
6 YEARS, LESS THAN 10	234	16.8
10 YEARS AND OVER	410	29.4

**TABLE 16**

TYPES OF BUSINESS ORGANIZATIONS  
ACTIVE 4TH QUARTER 2007

NAICS SECTOR	CORPORATIONS	INDIVIDUAL OWNERSHIPS	PARTNERSHIPS	OTHER
TOTAL	47,053	12,149	6,171	3,546
AGRI., FORESTRY, FISHING, HUNTING	958	327	534	21
MINING	372	37	47	4
UTILITIES	451	3	9	98
CONSTRUCTION	4,543	1,472	499	62
MANUFACTURING	2,295	303	250	26
WHOLESALE TRADE	4,232	199	342	40
RETAIL TRADE	8,173	2,294	948	75
TRANSPORTATION & WAREHOUSING	1,950	425	201	54
INFORMATION	885	46	56	214
FINANCE & INSURANCE	3,828	577	261	102
REAL ESTATE & RENTAL & LEASING	1,816	342	571	130
PROFESSIONAL & TECHNICAL SERVICES	3,857	1,219	604	109
MGMT. OF COMPANIES & ENTERPRISES	372	4	28	5
ADMINISTRATION & WASTE SERVICES	2,429	516	267	78
EDUCATIONAL SERVICES	396	48	15	681
HEALTH CARE & SOCIAL ASSISTANCE	4,045	1,212	505	709
ARTS, ENTERTAINMENT & RECREATION	530	71	81	39
ACCOMMODATION & FOOD SERVICES	3,205	901	689	66
OTHER SERVICES	2,643	2,153	264	146
PUBLIC ADMINISTRATION	72	0	0	887
NONCLASSIFIABLE	1	0	0	0

**APPENDIX**

**TABLE I**

**SIZE OF FIRM FOR COVERED EMPLOYMENT - BY PRIVATE SECTORS, LOCAL GOVERNMENT & STATE GOVERNMENT  
FOURTH QUARTER 2008**

**ALL COVERED EMPLOYMENT**

NUMBER OF EMPLOYEES	NUMBER OF REPORTING UNITS
TOTAL	57,020
0	7,135
1 - 4	27,028
5 - 9	9,624
10 - 19	6,112
20 - 49	3,976
50 - 99	1,442
100 - 249	1,025
250 - 499	372
500 - 999	193
1,000 & over	113

**AGRI., FORESTRY, FISHING & HUNTING**

NUMBER OF EMPLOYEES	NUMBER OF REPORTING UNITS
TOTAL	1,758
0	257
1 - 4	702
5 - 9	470
10 - 19	242
20 - 49	69
50 - 99	11
100 - 249	5
250 - 499	1
500 - 999	1
1,000 & over	0

**MINING**

NUMBER OF EMPLOYEES	NUMBER OF REPORTING UNITS
TOTAL	487
0	58
1 - 4	243
5 - 9	59
10 - 19	47
20 - 49	49
50 - 99	17
100 - 249	12
250 - 499	1
500 - 999	1
1,000 & over	0

**UTILITIES**

NUMBER OF EMPLOYEES	NUMBER OF REPORTING UNITS
TOTAL	390
0	7
1 - 4	250
5 - 9	76
10 - 19	15
20 - 49	10
50 - 99	16
100 - 249	9
250 - 499	4
500 - 999	2
1,000 & over	1

**CONSTRUCTION**

NUMBER OF EMPLOYEES	NUMBER OF REPORTING UNITS
TOTAL	6,468
0	1,380
1 - 4	2,826
5 - 9	1,002
10 - 19	660
20 - 49	426
50 - 99	104
100 - 249	51
250 - 499	17
500 - 999	2
1,000 & over	0

**MANUFACTURING**

NUMBER OF EMPLOYEES	NUMBER OF REPORTING UNITS
TOTAL	2,568
0	203
1 - 4	681
5 - 9	437
10 - 19	379
20 - 49	376
50 - 99	203
100 - 249	171
250 - 499	62
500 - 999	38
1,000 & over	18

**WHOLESALE TRADE**

NUMBER OF EMPLOYEES	NUMBER OF REPORTING UNITS
TOTAL	4,417
0	593
1 - 4	2,493
5 - 9	542
10 - 19	400
20 - 49	257
50 - 99	87
100 - 249	28
250 - 499	17
500 - 999	0
1,000 & over	0

**RETAIL TRADE**

NUMBER OF EMPLOYEES	NUMBER OF REPORTING UNITS
TOTAL	8,211
0	736
1 - 4	3,832
5 - 9	1,773
10 - 19	962
20 - 49	578
50 - 99	174
100 - 249	92
250 - 499	36
500 - 999	17
1,000 & over	11

**TABLE I**

**SIZE OF FIRM FOR COVERED EMPLOYMENT - BY PRIVATE SECTORS, LOCAL GOVERNMENT & STATE GOVERNMENT  
FOURTH QUARTER 2008**

**TRANSPORTATION & WAREHOUSING**

NUMBER OF EMPLOYEES	NUMBER OF REPORTING UNITS
TOTAL	2,324
0	359
1 - 4	1,069
5 - 9	356
10 - 19	240
20 - 49	162
50 - 99	77
100 - 249	44
250 - 499	12
500 - 999	3
1,000 & over	2

**INFORMATION**

NUMBER OF EMPLOYEES	NUMBER OF REPORTING UNITS
TOTAL	593
0	86
1 - 4	240
5 - 9	98
10 - 19	67
20 - 49	55
50 - 99	26
100 - 249	14
250 - 499	3
500 - 999	1
1,000 & over	3

**FINANCE & INSURANCE**

NUMBER OF EMPLOYEES	NUMBER OF REPORTING UNITS
TOTAL	2,903
0	312
1 - 4	1,839
5 - 9	342
10 - 19	172
20 - 49	115
50 - 99	64
100 - 249	41
250 - 499	10
500 - 999	4
1,000 & over	4

**REAL ESTATE & RENTAL & LEASING**

NUMBER OF EMPLOYEES	NUMBER OF REPORTING UNITS
TOTAL	2,267
0	264
1 - 4	1,482
5 - 9	279
10 - 19	149
20 - 49	59
50 - 99	20
100 - 249	11
250 - 499	3
500 - 999	0
1,000 & over	0

**PROF., SCI., & TECHNICAL SERVICES**

NUMBER OF EMPLOYEES	NUMBER OF REPORTING UNITS
TOTAL	5,600
0	852
1 - 4	3,276
5 - 9	781
10 - 19	406
20 - 49	193
50 - 99	54
100 - 249	30
250 - 499	7
500 - 999	1
1,000 & over	0

**MANAGEMENT OF COMPANIES & ENTER.**

NUMBER OF EMPLOYEES	NUMBER OF REPORTING UNITS
TOTAL	197
0	31
1 - 4	88
5 - 9	28
10 - 19	17
20 - 49	18
50 - 99	4
100 - 249	6
250 - 499	2
500 - 999	3
1,000 & over	0

**ADMIN. & SUPPORT & WASTE MGMT.**

NUMBER OF EMPLOYEES	NUMBER OF REPORTING UNITS
TOTAL	3,097
0	647
1 - 4	1,325
5 - 9	447
10 - 19	290
20 - 49	195
50 - 99	87
100 - 249	78
250 - 499	17
500 - 999	8
1,000 & over	3

**EDUCATIONAL SERVICES**

NUMBER OF EMPLOYEES	NUMBER OF REPORTING UNITS
TOTAL	474
0	61
1 - 4	180
5 - 9	65
10 - 19	44
20 - 49	76
50 - 99	31
100 - 249	12
250 - 499	4
500 - 999	1
1,000 & over	0

**TABLE I**

**SIZE OF FIRM FOR COVERED EMPLOYMENT - BY PRIVATE SECTORS, LOCAL GOVERNMENT & STATE GOVERNMENT  
FOURTH QUARTER 2008**

**HEALTH CARE & SOCIAL ASSISTANCE**

NUMBER OF EMPLOYEES	NUMBER OF REPORTING UNITS
TOTAL	4,944
0	349
1 - 4	1,850
5 - 9	1,253
10 - 19	714
20 - 49	371
50 - 99	182
100 - 249	165
250 - 499	33
500 - 999	12
1,000 & over	15

**ARTS, ENTERTAINMENT & REC.**

NUMBER OF EMPLOYEES	NUMBER OF REPORTING UNITS
TOTAL	684
0	107
1 - 4	302
5 - 9	88
10 - 19	104
20 - 49	52
50 - 99	16
100 - 249	8
250 - 499	3
500 - 999	2
1,000 & over	2

**ACCOMMODATION & FOOD SERVICES**

NUMBER OF EMPLOYEES	NUMBER OF REPORTING UNITS
TOTAL	3,703
0	350
1 - 4	923
5 - 9	698
10 - 19	773
20 - 49	662
50 - 99	167
100 - 249	65
250 - 499	24
500 - 999	26
1,000 & over	15

**OTHER SERVICES**

NUMBER OF EMPLOYEES	NUMBER OF REPORTING UNITS
TOTAL	4,951
0	473
1 - 4	3,273
5 - 9	747
10 - 19	296
20 - 49	123
50 - 99	25
100 - 249	12
250 - 499	2
500 - 999	0
1,000 & over	0

**LOCAL GOVERNMENT**

NUMBER OF EMPLOYEES	NUMBER OF REPORTING UNITS
TOTAL	854
0	8
1 - 4	139
5 - 9	71
10 - 19	121
20 - 49	114
50 - 99	68
100 - 249	147
250 - 499	106
500 - 999	57
1,000 & over	23

**STATE GOVERNMENT**

NUMBER OF EMPLOYEES	NUMBER OF REPORTING UNITS
TOTAL	130
0	2
1 - 4	15
5 - 9	12
10 - 19	14
20 - 49	16
50 - 99	9
100 - 249	24
250 - 499	8
500 - 999	14
1,000 & over	16



TABLE II

BUSINESS BIRTHS AND DEATHS BY COUNTY AND BY INDUSTRY  
2008

COUNTY	TOTAL		INDUSTRY											
			CONSTRUCTION		MANUFACTURING		TRADE		FINANCE, ETC.		SERVICES		OTHER	
	BIRTHS	DEATHS	BIRTH	DEATH	BIRTH	DEATH	BIRTH	DEATH	BIRTH	DEATH	BIRTH	DEATH	BIRTH	DEATH
TOTAL	5,781	4,485	854	672	133	168	1,113	911	436	395	2,683	1,828	562	511
ADAMS	49	66	2	3	1	1	6	14	1	7	32	34	7	7
ALCORN	42	42	4	2	3	2	11	9	3	5	18	16	3	8
AMITE	15	10	1	2	0	0	3	1	0	0	5	1	6	6
ATTALA	19	36	3	9	0	2	6	6	2	2	4	13	4	4
BENTON	5	8	0	0	0	0	2	2	0	0	2	3	1	3
BOLIVAR	36	39	3	3	1	0	6	10	3	4	17	15	6	7
CALHOUN	17	22	1	0	1	3	2	6	2	1	7	8	4	4
CARROLL	9	7	1	2	0	0	0	0	1	0	7	2	0	3
CHICKASAW	22	24	2	1	1	4	3	6	1	1	7	5	8	7
CHOCTAW	9	10	2	1	0	1	0	5	1	0	4	0	2	3
CLAIBORNE	4	8	0	0	0	0	1	2	0	0	3	6	0	0
CLARKE	19	21	1	1	3	3	6	3	0	1	5	7	4	6
CLAY	19	23	0	3	0	3	3	3	6	1	8	11	2	2
COAHOMA	30	28	1	1	0	3	4	3	4	5	15	13	6	3
COPIAH	20	33	5	2	0	5	2	11	2	2	9	10	2	3
COVINGTON	21	23	2	3	0	1	7	3	1	2	4	8	7	6
DESOTO	237	193	30	35	7	8	50	42	11	15	100	74	39	19
FORREST	136	137	17	12	3	8	22	36	8	8	75	65	11	8
FRANKLIN	5	8	1	2	0	0	1	1	1	0	2	3	0	2
GEORGE	36	21	9	3	1	1	5	5	1	1	15	7	5	4
GREENE	13	11	0	0	1	0	3	2	2	2	4	0	3	7
GRENADA	31	30	2	2	1	3	5	7	1	1	21	16	1	1
HANCOCK	99	70	35	16	3	3	16	9	5	7	33	34	7	1
HARRISON	375	290	75	58	10	6	55	41	39	40	177	135	19	10
HINDS	356	321	34	36	1	8	53	66	36	38	219	155	13	18
HOLMES	10	19	2	1	0	2	3	5	1	0	2	8	2	3
HUMPHREYS	8	21	1	0	0	0	0	2	0	0	4	8	3	11
ISSAQUENA	0	2	0	0	0	0	0	1	0	0	0	0	0	1
ITAWAMBA	16	20	3	1	2	3	2	4	1	2	8	7	0	3

TABLE II

BUSINESS BIRTHS AND DEATHS BY COUNTY AND BY INDUSTRY  
2008

COUNTY	TOTAL		INDUSTRY											
			CONSTRUCTION		MANUFACTURING		TRADE		FINANCE, ETC.		SERVICES		OTHER	
	BIRTHS	DEATHS	BIRTH	DEATH	BIRTH	DEATH	BIRTH	DEATH	BIRTH	DEATH	BIRTH	DEATH	BIRTH	DEATH
JACKSON	194	170	31	31	5	5	34	33	13	18	100	77	11	6
JASPER	18	15	3	2	3	0	2	2	2	0	6	9	2	2
JEFFERSON	3	2	1	0	0	0	0	0	0	0	2	2	0	0
JEFF. DAVIS	14	14	1	2	3	1	0	6	0	0	6	4	4	1
JONES	69	105	9	21	1	2	13	26	4	5	31	37	11	14
KEMPER	5	9	1	0	0	0	1	2	0	1	3	4	0	2
LAFAYETTE	102	96	15	12	3	2	18	11	10	11	51	50	5	10
LAMAR	109	90	15	20	2	3	26	21	9	8	45	29	12	9
LAUDERDALE	112	85	12	8	2	4	23	18	6	8	61	40	8	7
LAWRENCE	15	15	1	2	1	0	4	1	1	0	6	7	2	5
LEAKE	24	17	2	2	0	0	7	6	1	1	12	6	2	2
LEE	160	107	11	14	7	9	38	19	11	7	79	46	14	12
LEFLORE	34	42	4	3	0	2	6	12	5	6	13	13	6	6
LINCOLN	37	40	3	7	2	2	9	7	2	2	15	16	6	6
LOWNDES	94	82	18	8	2	5	15	16	13	14	40	35	6	4
MADISON	260	134	26	28	4	4	54	28	39	15	120	58	17	1
MARION	53	38	5	4	3	1	12	6	7	1	15	19	11	7
MARSHALL	27	32	3	6	3	1	11	8	0	2	9	9	1	6
MONROE	40	27	4	5	1	5	9	3	2	0	18	9	6	5
MONTGOMERY	17	12	3	2	1	0	2	2	0	1	8	6	3	1
NESHOBA	30	25	7	3	1	2	4	1	0	1	10	7	8	11
NEWTON	22	15	4	1	0	1	12	6	0	0	5	4	1	3
NOXUBEE	6	15	3	3	0	1	1	2	0	1	2	4	0	4
OKTIBBEHA	59	49	7	5	4	2	10	12	6	4	29	20	3	6
PANOLA	41	40	5	4	1	2	13	12	3	1	16	16	3	5
PEARL RIVER	81	83	3	18	7	3	14	14	2	5	45	35	10	8
PERRY	10	9	3	1	0	0	2	1	0	0	3	4	2	3
PIKE	70	70	11	10	0	2	16	13	7	6	33	30	3	9
PONTOTOC	32	26	2	3	2	7	11	5	0	2	14	7	3	2
PRENTISS	29	13	4	1	1	1	3	3	2	3	15	2	4	3
QUITMAN	5	4	0	1	0	0	0	2	0	0	4	0	1	1

TABLE II

BUSINESS BIRTHS AND DEATHS BY COUNTY AND BY INDUSTRY  
2008

COUNTY	TOTAL		INDUSTRY											
			CONSTRUCTION		MANUFACTURING		TRADE		FINANCE, ETC.		SERVICES		OTHER	
	BIRTHS	DEATHS	BIRTH	DEATH	BIRTH	DEATH	BIRTH	DEATH	BIRTH	DEATH	BIRTH	DEATH	BIRTH	DEATH
RANKIN	277	200	41	48	8	5	39	28	25	19	143	84	21	16
SCOTT	26	25	5	7	1	0	3	6	1	3	15	6	1	3
SHARKEY	4	4	1	0	0	0	1	2	0	0	1	0	1	2
SIMPSON	27	23	6	7	1	0	6	6	0	1	11	6	3	3
SMITH	14	18	0	1	0	0	4	4	0	0	8	7	2	6
STONE	30	23	7	1	1	2	4	5	2	0	9	7	7	8
SUNFLOWER	37	28	3	3	0	0	9	8	2	0	13	10	10	7
TALLAHATCHIE	12	10	1	1	0	0	2	2	1	1	6	3	2	3
TATE	24	21	2	2	2	0	5	7	2	4	9	8	4	0
TIPPAH	12	15	1	0	3	4	3	5	1	1	4	3	0	2
TISHOMINGO	24	15	8	2	0	0	5	4	1	1	9	6	1	2
TUNICA	22	15	1	0	1	0	6	6	2	0	9	5	3	4
UNION	31	17	10	3	1	0	6	3	1	1	9	4	4	6
WALTHALL	9	9	1	2	1	0	2	4	0	0	5	2	0	1
WARREN	65	84	6	12	1	3	10	21	7	5	37	39	4	4
WASHINGTON	71	69	7	7	2	1	10	16	5	4	36	34	11	7
WAYNE	24	31	3	2	0	1	6	5	0	3	7	9	8	11
WEBSTER	6	5	3	0	0	1	3	0	0	0	0	2	0	2
WILKINSON	12	3	3	0	0	0	3	0	0	0	5	2	1	1
WINSTON	15	21	2	3	1	1	3	6	0	1	8	5	1	5
YALOBUSHA	12	10	2	2	0	0	4	0	0	1	6	3	0	4
YAZOO	29	35	4	2	0	1	4	6	3	2	10	18	8	6
UNCLASSIFIED	1,568	780	283	141	12	12	328	164	105	80	700	296	140	87

**TABLE III**

**BUSINESS DEATHS BY SELECTED\*  
MANUFACTURING SUBSECTORS AND BY LENGTH OF LIFE  
2008**

SELECTED MANUFACTURING SUBSECTORS	TOTAL DEATHS	LENGTH OF LIFE							
		LESS THAN 1 YR	1 YR.- LESS THAN 2	2 YRS.- LESS THAN 3	3 YRS.- LESS THAN 4	4 YRS.- LESS THAN 5	5 YRS.- LESS THAN 6	6 YRS.- LESS THAN 10	10 YRS. AND OVER
311 FOOD MANUFACTURING	11	2	2	0	0	0	1	1	5
321 WOOD PRODUCT	15	5	1	1	0	2	1	1	4
323 PRINTING AND RELATED SUPPORT	13	0	1	1	1	0	0	3	7
326 PLASTICS & RUBBER PRODUCTS	11	1	3	2	0	0	0	0	5
327 NONMETALLIC MINERAL PRODUCT	10	4	1	0	0	1	0	1	3
332 FABRICATED METAL PRODUCT	16	3	2	0	0	3	0	2	6
337 FURNITURE AND RELATED PRODUCT	40	6	11	4	0	1	2	5	11
339 MISCELLANEOUS MANUFACTURING	19	4	1	2	0	1	1	4	6

\* USED INDUSTRIES WITH 10 OR MORE DEATHS FOR THE YEAR

TABLE IV

BUSINESS DEATHS BY COUNTY AND BY LENGTH OF LIFE  
2008

COUNTY	TOTAL DEATHS	LENGTH OF LIFE							
		LESS THAN 1 YR	1 YR.- LESS THAN 2	2 YRS.- LESS THAN 3	3 YRS.- LESS THAN 4	4 YRS.- LESS THAN 5	5 YRS.- LESS THAN 6	6 YRS.- LESS THAN 10	10 YRS. AND OVER
TOTAL	4,485	1,301	781	466	339	241	165	453	739
ADAMS	66	12	12	13	6	1	3	7	12
ALCORN	42	9	9	3	2	3	2	4	10
AMITE	10	3	2	1	1	0	0	0	3
ATTALA	36	7	3	4	4	1	1	4	12
BENTON	8	1	0	0	0	4	0	1	2
BOLIVAR	39	6	7	3	4	1	0	4	14
CALHOUN	22	4	4	2	0	4	1	3	4
CARROLL	7	1	1	0	0	1	0	2	2
CHICKASAW	24	4	5	2	2	0	2	2	7
CHOCTAW	10	2	1	0	0	0	0	1	6
CLAIBORNE	8	0	2	2	1	1	0	1	1
CLARKE	21	4	5	1	2	0	0	1	8
CLAY	23	5	3	4	1	2	3	3	2
COAHOMA	28	4	4	0	2	4	1	5	8
COPIAH	33	4	5	2	3	2	2	8	7
COVINGTON	23	10	2	1	0	2	1	1	6
DESOTO	193	51	40	26	20	11	6	15	24
FORREST	137	32	20	19	12	8	5	18	23
FRANKLIN	8	4	1	0	0	0	0	0	3
GEORGE	21	8	4	3	1	0	0	4	1
GREENE	11	2	2	1	0	0	2	3	1
GRENADA	30	8	5	1	4	0	0	7	5
HANCOCK	70	19	17	6	5	6	3	5	9
HARRISON	290	79	60	34	21	17	6	30	43
HINDS	321	66	37	36	23	22	14	43	80
HOLMES	19	5	3	2	2	1	2	0	4
HUMPHREYS	21	3	4	2	1	0	1	4	6
ISSAQUENA	2	1	0	1	0	0	0	0	0

TABLE IV

BUSINESS DEATHS BY COUNTY AND BY LENGTH OF LIFE  
2008

COUNTY	TOTAL DEATHS	LENGTH OF LIFE							
		LESS THAN 1 YR	1 YR.- LESS THAN 2	2 YRS.- LESS THAN 3	3 YRS.- LESS THAN 4	4 YRS.- LESS THAN 5	5 YRS.- LESS THAN 6	6 YRS.- LESS THAN 10	10 YRS. AND OVER
ITAWAMBA	20	6	0	3	0	2	1	2	6
JACKSON	170	55	32	17	13	7	4	20	22
JASPER	15	6	1	1	2	1	1	0	3
JEFFERSON	2	0	0	0	0	0	0	1	1
JEFF. DAVIS	14	3	2	3	4	0	0	1	1
JONES	105	32	12	7	9	5	4	10	26
KEMPER	9	1	2	1	0	1	0	1	3
LAFAYETTE	96	23	20	14	7	4	2	8	18
LAMAR	90	34	16	8	7	4	3	11	7
LAUDERDALE	85	15	12	10	3	6	5	10	24
LAWRENCE	15	5	0	2	0	1	1	0	6
LEAKE	17	6	1	1	3	0	0	2	4
LEE	107	24	20	10	8	3	11	11	20
LEFLORE	42	3	6	5	4	3	2	7	12
LINCOLN	40	12	7	3	4	4	1	5	4
LOWNDES	82	13	14	12	2	8	4	8	21
MADISON	134	42	29	15	7	11	4	8	18
MARION	38	10	6	3	5	1	1	5	7
MARSHALL	32	10	3	2	2	1	0	7	7
MONROE	27	6	4	3	0	0	2	3	9
MONTGOMERY	12	4	4	1	0	0	2	0	1
NESHOBA	25	9	2	1	4	1	1	2	5
NEWTON	15	1	4	2	2	1	0	2	3
NOXUBEE	15	3	2	1	2	0	1	4	2
OKTIBBEHA	49	12	10	3	5	0	1	6	12
PANOLA	40	15	4	2	2	1	1	3	12
PEARL RIVER	83	23	27	7	5	5	2	3	11
PERRY	9	2	4	2	0	0	0	0	1
PIKE	70	16	10	11	9	2	1	6	15
PONTOTOC	26	6	10	1	0	1	0	2	6

TABLE IV

BUSINESS DEATHS BY COUNTY AND BY LENGTH OF LIFE  
2008

COUNTY	TOTAL DEATHS	LENGTH OF LIFE							
		LESS THAN 1 YR	1 YR.- LESS THAN 2	2 YRS.- LESS THAN 3	3 YRS.- LESS THAN 4	4 YRS.- LESS THAN 5	5 YRS.- LESS THAN 6	6 YRS.- LESS THAN 10	10 YRS. AND OVER
PRENTISS	13	5	2	0	1	1	0	2	2
QUITMAN	4	0	0	1	0	0	0	1	2
RANKIN	200	63	42	21	12	9	15	19	19
SCOTT	25	10	6	1	1	0	0	5	2
SHARKEY	4	1	1	1	0	0	0	0	1
SIMPSON	23	5	1	3	3	3	1	2	5
SMITH	18	3	3	2	1	1	1	1	6
STONE	23	8	4	3	2	0	1	0	5
SUNFLOWER	28	2	6	3	4	1	0	9	3
TALLAHATCHIE	10	1	0	0	1	1	0	2	5
TATE	21	2	1	4	2	1	1	5	5
TIPPAH	15	3	2	2	0	1	3	1	3
TISHOMINGO	15	5	1	1	2	2	0	3	1
TUNICA	15	1	2	1	3	2	0	2	4
UNION	17	5	2	1	2	2	0	1	4
WALTHALL	9	2	1	1	0	0	2	2	1
WARREN	84	18	10	10	5	6	7	8	20
WASHINGTON	69	20	6	8	2	5	2	5	21
WAYNE	31	6	3	2	8	3	2	2	5
WEBSTER	5	1	0	0	0	0	1	1	2
WILKINSON	3	1	0	0	1	0	0	1	0
WINSTON	21	2	4	3	1	3	2	5	1
YALOBUSHA	10	2	1	2	1	0	1	2	1
YAZOO	35	7	8	3	1	1	1	4	10
UNCLASSIFIED	780	377	153	73	60	35	15	46	21

TABLE V

CHANGES IN OWNERSHIP BY COUNTY AND BY INDUSTRY  
2008

COUNTY	TOTAL		INDUSTRY					
	NUMBER	PER CENT	CONSTR	MFG	TRADE	FIN. ETC.	SERV.	OTHER
TOTAL	1,396	100.0	61	92	451	123	562	107
ADAMS	14	1.0	2	0	2	0	8	2
ALCORN	28	2.0	1	2	11	3	9	2
AMITE	3	0.2	0	1	2	0	0	0
ATTALA	15	1.1	2	1	7	0	4	1
BENTON	3	0.2	0	1	2	0	0	0
BOLIVAR	14	1.0	0	1	5	4	4	0
CALHOUN	9	0.6	0	0	6	1	1	1
CARROLL	2	0.1	0	0	1	0	0	1
CHICKASAW	3	0.2	0	0	0	1	2	0
CHOCTAW	5	0.4	0	1	2	0	2	0
CLAIBORNE	4	0.3	1	0	1	0	2	0
CLARKE	7	0.5	0	2	2	0	1	2
CLAY	8	0.6	1	0	4	0	3	0
COAHOMA	10	0.7	1	0	2	0	7	0
COPIAH	6	0.4	0	0	3	1	1	1
COVINGTON	5	0.4	0	0	1	0	1	3
DESOTO	65	4.7	3	3	15	4	35	5
FORREST	31	2.2	1	2	14	3	10	1
FRANKLIN	0	0.0	0	0	0	0	0	0
GEORGE	9	0.6	0	1	4	2	2	0
GREENE	1	0.1	0	0	1	0	0	0
GRENADA	7	0.5	0	0	1	1	5	0
HANCOCK	10	0.7	0	1	4	1	4	0
HARRISON	89	6.4	3	7	24	7	38	10
HINDS	113	8.1	5	5	30	11	54	8
HOLMES	12	0.9	1	0	6	1	3	1
HUMPHREYS	2	0.1	0	1	1	0	0	0
ISSAQUENA	0	0.0	0	0	0	0	0	0



TABLE V

CHANGES IN OWNERSHIP BY COUNTY AND BY INDUSTRY  
2008

COUNTY	TOTAL		INDUSTRY					
	NUMBER	PER CENT	CONSTR	MFG	TRADE	FIN. ETC.	SERV.	OTHER
ITAWAMBA	6	0.4	4	0	0	0	0	2
JACKSON	48	3.4	2	1	17	9	17	2
JASPER	8	0.6	0	2	4	0	2	0
JEFFERSON	0	0.0	0	0	0	0	0	0
JEFF. DAVIS	5	0.4	0	0	3	0	1	1
JONES	27	1.9	2	6	5	2	12	0
KEMPER	1	0.1	0	0	0	0	0	1
LAFAYETTE	33	2.4	0	8	8	2	13	2
LAMAR	8	0.6	0	1	3	0	3	1
LAUDERDALE	45	3.2	1	3	12	5	20	4
LAWRENCE	2	0.1	0	0	0	0	2	0
LEAKE	12	0.9	0	0	7	2	2	1
LEE	52	3.7	2	4	13	7	23	3
LEFLORE	14	1.0	1	1	7	0	4	1
LINCOLN	23	1.6	1	1	7	2	9	3
LOWNDES	34	2.4	1	4	9	0	19	1
MADISON	41	2.9	3	3	12	1	20	2
MARION	9	0.6	0	1	4	0	3	1
MARSHALL	8	0.6	2	1	3	0	2	0
MONROE	18	1.3	0	0	9	0	7	2
MONTGOMERY	4	0.3	0	0	2	0	1	1
NESHOBA	11	0.8	0	0	1	3	6	1
NEWTON	11	0.8	1	0	3	1	6	0
NOXUBEE	4	0.3	0	0	3	0	0	1
OKTIBBEHA	30	2.1	2	1	8	4	14	1
PANOLA	16	1.1	1	1	4	0	6	4
PEARL RIVER	15	1.1	0	1	6	2	5	1
PERRY	1	0.1	0	0	0	0	1	0
PIKE	27	1.9	0	2	9	3	13	0
PONTOTOC	14	1.0	3	1	4	4	2	0

**TABLE V**

CHANGES IN OWNERSHIP BY COUNTY AND BY INDUSTRY  
2008

COUNTY	TOTAL		INDUSTRY					
	NUMBER	PER CENT	CONSTR	MFG	TRADE	FIN. ETC.	SERV.	OTHER
PRENTISS	4	0.3	0	0	2	0	1	1
QUITMAN	0	0.0	0	0	0	0	0	0
RANKIN	68	4.9	3	5	18	9	29	4
SCOTT	12	0.9	0	0	4	1	6	1
SHARKEY	0	0.0	0	0	0	0	0	0
SIMPSON	10	0.7	0	0	2	2	6	0
SMITH	2	0.1	0	0	1	0	1	0
STONE	7	0.5	0	0	2	1	4	0
SUNFLOWER	12	0.9	0	0	5	0	5	2
TALLAHATCHIE	1	0.1	0	0	0	0	0	1
TATE	6	0.4	1	0	2	1	1	1
TIPPAH	12	0.9	3	1	3	1	4	0
TISHOMINGO	2	0.1	0	1	1	0	0	0
TUNICA	3	0.2	0	0	1	0	1	1
UNION	5	0.4	1	2	0	0	2	0
WALTHALL	6	0.4	1	0	3	0	2	0
WARREN	21	1.5	2	3	6	0	9	1
WASHINGTON	19	1.4	0	0	2	2	12	3
WAYNE	13	0.9	0	1	5	0	4	3
WEBSTER	4	0.3	1	0	2	0	1	0
WILKINSON	2	0.1	0	0	0	1	1	0
WINSTON	5	0.4	0	0	4	0	1	0
YALOBUSHA	5	0.4	0	1	3	0	1	0
YAZOO	8	0.6	0	0	2	0	5	1
UNCLASSIFIED	167	12.0	2	7	69	18	57	14

TABLE VI-A

BUSINESS BIRTHS BY COUNTY AND BY MONTH  
2008

COUNTY	TOTAL BIRTHS	BIRTHS PER MONTH											
		JAN.	FEB.	MAR.	APR.	MAY	JUNE	JULY	AUG.	SEPT.	OCT.	NOV.	DEC.
TOTAL	5,781	614	642	547	451	439	679	529	553	369	350	190	418
ADAMS	49	5	8	0	6	3	3	7	5	4	6	0	2
ALCORN	42	7	5	4	4	2	2	4	4	1	4	2	3
AMITE	15	2	1	1	0	0	5	0	2	2	1	0	1
ATTALA	19	1	1	2	4	1	2	2	0	0	3	2	1
BENTON	5	0	0	0	0	0	0	1	2	0	0	2	0
BOLIVAR	36	11	1	1	3	4	1	5	4	1	3	2	0
CALHOUN	17	5	2	0	2	2	1	2	0	1	1	0	1
CARROLL	9	1	0	0	2	1	0	3	1	0	1	0	0
CHICKASAW	22	4	4	1	0	3	0	3	3	1	1	0	2
CHOCTAW	9	1	1	0	1	0	1	1	0	2	1	1	0
CLAIBORNE	4	1	0	0	0	0	2	0	1	0	0	0	0
CLARKE	19	0	0	4	2	3	1	3	1	0	4	0	1
CLAY	19	2	2	3	2	2	4	1	0	0	1	1	1
COAHOMA	30	9	3	0	2	2	3	2	2	1	0	2	4
COPIAH	20	1	4	0	1	1	1	2	4	0	4	2	0
COVINGTON	21	1	5	1	0	4	4	0	4	0	1	0	1
DESOTO	237	35	21	22	18	13	41	20	26	7	11	8	15
FORREST	136	15	10	16	6	10	20	10	16	4	14	5	10
FRANKLIN	5	0	1	0	1	0	1	0	0	1	0	1	0
GEORGE	36	0	2	5	9	2	2	4	2	3	1	1	5
GREENE	13	2	2	2	1	0	2	1	1	0	0	0	2
GRENADA	31	3	2	1	3	3	3	5	7	0	0	2	2
HANCOCK	99	10	12	10	6	4	13	9	9	4	10	3	9
HARRISON	375	44	31	37	33	28	56	38	27	18	21	12	30
HINDS	356	28	31	47	24	16	51	37	39	25	18	11	29
HOLMES	10	2	1	2	0	0	0	1	0	1	0	2	1
HUMPHREYS	8	1	3	0	1	0	1	0	1	0	0	0	1
ISSAQUENA	0	0	0	0	0	0	0	0	0	0	0	0	0
ITAWAMBA	16	3	1	1	3	0	0	0	2	2	1	0	3

TABLE VI-A

BUSINESS BIRTHS BY COUNTY AND BY MONTH

2008

COUNTY	TOTAL BIRTHS	BIRTHS PER MONTH											
		JAN.	FEB.	MAR.	APR.	MAY	JUNE	JULY	AUG.	SEPT.	OCT.	NOV.	DEC.
JACKSON	194	19	17	21	16	15	26	13	15	8	13	10	21
JASPER	18	3	0	1	5	1	1	0	2	1	3	0	1
JEFFERSON	3	0	0	0	0	1	0	0	0	0	0	2	0
JEFF. DAVIS	14	0	2	3	3	1	1	0	1	2	0	0	1
JONES	69	6	9	4	5	4	9	2	10	2	3	5	10
KEMPER	5	0	0	1	1	1	0	1	0	0	0	1	0
LAFAYETTE	102	15	14	8	10	6	7	11	4	7	8	1	11
LAMAR	109	16	13	7	9	8	11	14	6	6	10	1	8
LAUDERDALE	112	21	9	13	11	10	7	9	10	1	9	3	9
LAWRENCE	15	2	3	3	1	1	0	0	2	0	0	0	3
LEAKE	24	3	3	1	1	7	2	4	1	1	0	1	0
LEE	160	26	19	17	14	14	23	12	14	4	8	5	4
LEFLORE	34	6	4	2	5	1	5	2	5	0	2	1	1
LINCOLN	37	7	5	4	4	4	2	3	4	0	2	0	2
LOWNDES	94	11	17	7	12	9	2	8	11	4	7	3	3
MADISON	260	28	38	26	17	21	31	25	24	21	14	4	11
MARION	53	3	9	7	2	4	4	3	7	2	6	1	5
MARSHALL	27	3	0	1	4	1	4	2	4	2	3	1	2
MONROE	40	2	3	0	4	5	5	4	10	3	2	2	0
MONTGOMERY	17	3	3	0	0	3	1	1	5	0	0	1	0
NESHOBA	30	5	3	1	7	0	0	2	4	3	1	3	1
NEWTON	22	6	2	1	2	2	1	3	2	0	1	1	1
NOXUBEE	6	0	1	0	0	1	0	0	2	0	0	1	1
OKTIBBEHA	59	3	6	6	7	6	4	5	6	8	4	2	2
PANOLA	41	5	4	4	4	5	6	5	3	1	2	0	2
PEARL RIVER	81	12	9	3	7	8	10	8	7	3	6	3	5
PERRY	10	0	4	1	1	1	1	1	1	0	0	0	0
PIKE	70	8	9	9	7	10	5	5	7	3	1	2	4
PONTOTOC	32	1	4	3	4	2	2	2	4	4	4	1	1
PRENTISS	29	3	5	1	4	1	4	4	2	1	2	1	1
QUITMAN	5	0	1	0	0	1	0	0	1	1	0	0	1

TABLE VI-A

BUSINESS BIRTHS BY COUNTY AND BY MONTH  
2008

COUNTY	TOTAL BIRTHS	BIRTHS PER MONTH											
		JAN.	FEB.	MAR.	APR.	MAY	JUNE	JULY	AUG.	SEPT.	OCT.	NOV.	DEC.
RANKIN	277	27	27	34	27	29	22	24	25	20	13	12	17
SCOTT	26	1	3	2	1	5	3	3	2	2	2	1	1
SHARKEY	4	0	0	0	0	0	1	1	0	0	1	0	1
SIMPSON	27	2	3	5	0	4	1	2	4	1	1	1	3
SMITH	14	1	3	1	2	1	0	2	2	0	1	1	0
STONE	30	1	3	3	2	6	0	4	6	0	3	1	1
SUNFLOWER	37	3	9	4	0	3	5	4	3	2	4	0	0
TALLAHATCHIE	12	1	3	0	1	1	0	2	1	1	1	0	1
TATE	24	5	3	2	3	1	0	2	4	2	0	2	0
TIPPAH	12	2	3	0	0	0	0	2	2	1	1	1	0
TISHOMINGO	24	4	2	4	5	1	1	0	3	1	2	1	0
TUNICA	22	3	0	2	2	0	5	2	4	1	1	1	1
UNION	31	2	1	3	3	4	3	4	2	3	3	1	2
WALTHALL	9	3	0	0	1	0	2	1	0	1	0	0	1
WARREN	65	5	9	5	6	6	8	5	4	6	2	2	7
WASHINGTON	71	9	8	7	4	5	7	9	7	4	2	6	3
WAYNE	24	3	2	1	3	3	0	6	3	0	2	1	0
WEBSTER	6	2	0	0	0	1	0	0	2	0	0	1	0
WILKINSON	12	1	3	2	1	1	1	1	1	1	0	0	0
WINSTON	15	6	0	1	1	1	2	0	0	1	0	3	0
YALOBUSHA	12	2	1	1	0	3	0	2	0	1	2	0	0
YAZOO	29	1	7	3	3	0	2	2	2	1	5	2	1
UNCLASSIFIED	1,568	119	182	152	85	106	222	141	139	154	86	38	144

TABLE VI-B

BUSINESS DEATHS BY COUNTY AND BY MONTH  
2008

COUNTY	TOTAL DEATHS	DEATHS PER MONTH											
		JAN.	FEB.	MAR.	APR.	MAY	JUNE	JULY	AUG.	SEPT.	OCT.	NOV.	DEC.
TOTAL	4,485	333	275	247	347	379	393	293	351	466	541	479	381
ADAMS	66	1	8	1	7	6	2	4	3	9	6	9	10
ALCORN	42	2	5	1	3	3	3	1	2	3	7	2	10
AMITE	10	1	0	1	1	1	0	1	0	0	3	0	2
ATTALA	36	0	2	2	1	3	5	3	2	2	5	4	7
BENTON	8	0	0	0	0	0	2	1	0	1	1	3	0
BOLIVAR	39	5	0	3	1	2	9	1	4	4	2	3	5
CALHOUN	22	1	1	1	1	2	5	3	0	4	1	0	3
CARROLL	7	0	0	1	0	1	1	1	0	0	2	1	0
CHICKASAW	24	0	1	1	1	2	1	0	4	6	4	2	2
CHOCTAW	10	0	2	0	0	2	0	0	2	2	1	0	1
CLAIBORNE	8	1	1	0	1	2	0	1	0	0	2	0	0
CLARKE	21	2	1	0	2	0	0	3	3	3	4	0	3
CLAY	23	4	1	2	0	2	1	1	1	0	6	3	2
COAHOMA	28	5	7	2	2	1	2	2	1	1	3	0	2
COPIAH	33	1	2	2	2	4	4	3	3	2	7	2	1
COVINGTON	23	2	1	2	1	4	4	0	0	4	1	1	3
DESOTO	193	11	6	8	19	13	12	18	10	30	29	17	20
FORREST	137	6	5	6	19	4	19	11	4	10	21	15	17
FRANKLIN	8	1	0	0	0	1	0	0	1	1	1	1	2
GEORGE	21	5	0	1	3	1	1	2	2	0	5	0	1
GREENE	11	1	1	1	0	0	1	0	4	0	2	0	1
GRENADA	30	2	0	0	0	7	4	1	3	4	2	4	3
HANCOCK	70	4	5	2	5	4	2	6	9	4	10	9	10
HARRISON	290	20	12	23	26	16	25	20	21	18	53	32	24
HINDS	321	22	20	22	23	22	36	25	33	31	41	32	14
HOLMES	19	2	0	2	1	2	1	0	2	4	3	1	1
HUMPHREYS	21	2	0	0	1	0	3	2	0	2	5	4	2
ISSAQUENA	2	1	0	0	0	0	0	0	0	0	0	1	0
ITAWAMBA	20	1	3	0	1	0	2	0	2	4	4	0	3

TABLE VI-B

BUSINESS DEATHS BY COUNTY AND BY MONTH  
2008

COUNTY	TOTAL DEATHS	DEATHS PER MONTH											
		JAN.	FEB.	MAR.	APR.	MAY	JUNE	JULY	AUG.	SEPT.	OCT.	NOV.	DEC.
JACKSON	170	23	10	10	14	16	27	12	9	5	18	11	15
JASPER	15	3	0	1	1	1	3	0	2	2	1	0	1
JEFFERSON	2	0	0	0	0	0	1	0	0	0	1	0	0
JEFF. DAVIS	14	0	1	0	1	0	0	1	2	1	2	3	3
JONES	105	7	4	6	9	5	9	21	3	9	16	12	4
KEMPER	9	0	1	1	0	1	0	0	1	1	1	1	2
LAFAYETTE	96	6	4	1	16	5	11	8	7	8	11	8	11
LAMAR	90	6	2	7	8	6	10	6	7	7	19	5	7
LAUDERDALE	85	4	3	10	4	11	12	5	6	5	10	5	10
LAWRENCE	15	1	1	0	3	1	2	0	4	0	0	2	1
LEAKE	17	2	1	0	4	1	1	1	2	1	1	0	3
LEE	107	4	10	2	5	16	14	6	9	7	8	15	11
LEFLORE	42	3	4	4	2	4	3	2	5	5	4	4	2
LINCOLN	40	4	5	4	1	3	0	2	6	9	2	4	0
LOWNDES	82	4	3	11	7	11	6	7	7	10	5	7	4
MADISON	134	15	5	16	13	11	13	7	8	8	5	23	10
MARION	38	3	1	1	4	4	1	1	1	10	2	8	2
MARSHALL	32	0	2	1	5	2	0	3	2	2	2	4	9
MONROE	27	2	3	0	3	3	0	1	5	1	2	3	4
MONTGOMERY	12	1	1	1	1	1	0	2	1	1	0	2	1
NESHOBA	25	0	0	1	2	3	2	1	2	4	3	4	3
NEWTON	15	0	1	1	3	1	0	3	3	0	0	0	3
NOXUBEE	15	0	0	2	2	4	0	0	2	2	0	3	0
OKTIBBEHA	49	6	4	0	3	5	3	1	9	4	0	10	4
PANOLA	40	3	3	0	5	2	4	2	2	9	2	4	4
PEARL RIVER	83	7	2	2	11	8	6	8	4	5	4	15	11
PERRY	9	1	0	0	0	1	2	1	0	0	1	1	2
PIKE	70	4	1	5	10	2	9	5	3	8	3	13	7
PONTOTOC	26	2	3	1	0	5	1	0	2	2	8	1	1
PRENTISS	13	2	0	1	3	2	1	0	0	2	2	0	0
QUITMAN	4	1	0	0	0	0	0	0	1	0	0	0	2

**TABLE VI-B**

**BUSINESS DEATHS BY COUNTY AND BY MONTH  
2008**

COUNTY	TOTAL DEATHS	DEATHS PER MONTH											
		JAN.	FEB.	MAR.	APR.	MAY	JUNE	JULY	AUG.	SEPT.	OCT.	NOV.	DEC.
RANKIN	200	14	11	5	23	12	15	19	20	25	16	19	21
SCOTT	25	1	3	3	0	0	0	2	1	4	2	4	5
SHARKEY	4	0	1	0	1	0	0	0	0	2	0	0	0
SIMPSON	23	1	1	1	2	7	2	0	2	3	0	3	1
SMITH	18	0	1	0	2	2	0	1	1	3	2	5	1
STONE	23	3	2	3	4	2	2	1	0	0	1	4	1
SUNFLOWER	28	0	7	1	1	1	2	0	4	4	1	5	2
TALLAHATCHIE	10	1	0	1	0	0	1	1	1	0	1	2	2
TATE	21	1	0	0	2	1	1	4	3	6	0	1	2
TIPPAH	15	3	0	0	0	2	0	3	2	3	0	1	1
TISHOMINGO	15	1	0	0	1	1	4	0	1	2	5	0	0
TUNICA	15	1	0	2	0	3	0	0	1	4	0	1	3
UNION	17	3	1	1	0	2	1	1	0	1	4	1	2
WALTHALL	9	0	1	1	0	1	0	0	0	2	0	4	0
WARREN	84	3	10	4	4	1	7	4	4	19	17	9	2
WASHINGTON	69	3	1	5	4	4	6	3	7	10	12	7	7
WAYNE	31	3	3	1	2	1	2	4	4	0	6	2	3
WEBSTER	5	0	0	1	0	0	0	0	0	1	1	2	0
WILKINSON	3	0	0	1	0	0	0	0	0	1	0	1	0
WINSTON	21	3	0	0	1	1	0	0	2	3	6	2	3
YALOBUSHA	10	1	1	1	0	3	2	0	0	2	0	0	0
YAZOO	35	1	3	0	2	0	3	3	1	3	10	4	5
UNCLASSIFIED	780	73	70	43	37	95	59	31	66	91	93	88	34



TABLE VII-A

BUSINESS BIRTHS BY NAICS SECTOR & SUBSECTOR BY MONTH  
2008

NAICS SECTOR & SUBSECTOR	TOTAL BIRTHS	BIRTHS PER MONTH											
		JAN.	FEB.	MAR.	APR.	MAY	JUNE	JULY	AUG.	SEPT.	OCT.	NOV.	DEC.
GRAND TOTAL	5,781	614	642	547	451	439	679	529	553	369	350	190	418
AGRI., FORESTRY, FISHING,	90	6	20	11	6	7	6	11	11	2	4	2	4
111 CROP PRODUCTION	30	4	6	3	5	1	1	4	2	0	0	2	2
112 ANIMAL PRODUCTION	10	0	6	1	0	0	0	1	0	0	1	0	1
113 FORESTRY & LOGGING	23	0	5	2	0	3	1	3	8	0	1	0	0
114 FISHING HUNTING TRAP	0	0	0	0	0	0	0	0	0	0	0	0	0
115 AGR & FRSTRY SUPPORT	27	2	3	5	1	3	4	3	1	2	2	0	1
MINING	75	7	10	5	6	9	6	9	7	3	6	2	5
211 OIL & GAS EXTRACTION	5	0	1	1	0	2	0	0	1	0	0	0	0
212 MINING EXCPT OIL GAS	5	0	2	1	0	0	0	2	0	0	0	0	0
213 SUPPORT FOR MINING	65	7	7	3	6	7	6	7	6	3	6	2	5
UTILITIES	7	2	1	0	0	0	0	1	0	0	0	1	2
221 UTILITIES	7	2	1	0	0	0	0	1	0	0	0	1	2
CONSTRUCTION	854	96	96	75	86	67	102	68	81	46	48	33	56
236 CONSTR. OF BUILDINGS	259	36	31	15	25	24	34	20	25	14	14	6	15
237 HVY & CIVIL ENG CONS	101	3	14	6	14	6	13	14	6	5	8	5	7
238 SPECIALTY TR CONTR.	494	57	51	54	47	37	55	34	50	27	26	22	34
MANUFACTURING	133	12	15	16	11	10	14	13	17	4	6	8	7
311 FOOD MANUFACTURING	8	2	0	0	0	0	2	2	0	0	0	2	0
312 BEVG. & TOBACCO MFG.	2	0	0	0	1	0	0	1	0	0	0	0	0
313 TEXTILE MILLS	1	0	0	0	0	0	0	1	0	0	0	0	0
314 TEXTILE PRODUCT MILL	6	0	2	0	1	1	0	0	2	0	0	0	0
315 APPAREL MFG.	1	0	0	1	0	0	0	0	0	0	0	0	0
316 LEATHER & ALLIED PRD	1	1	0	0	0	0	0	0	0	0	0	0	0
321 WOOD PRODUCT MFG.	7	1	0	0	2	1	1	1	1	0	0	0	0
322 PAPER MFG.	2	0	0	0	0	2	0	0	0	0	0	0	0
323 PRINTING & SUPPORT	5	2	0	1	1	0	0	1	0	0	0	0	0
324 PETROL & COAL PROD	1	0	0	0	0	0	0	0	0	0	0	0	1
325 CHEMICAL MFG.	10	1	1	1	1	1	0	0	2	1	0	2	0
326 PLASTICS & RUBBER	3	0	0	0	2	0	0	0	0	0	0	0	1
327 NONMETAL MINERAL MFG	10	0	1	2	0	0	0	1	2	0	2	1	1

TABLE VII-A

## BUSINESS BIRTHS BY NAICS SECTOR &amp; SUBSECTOR BY MONTH

2008

NAICS SECTOR & SUBSECTOR	TOTAL BIRTHS	BIRTHS PER MONTH											
		JAN.	FEB.	MAR.	APR.	MAY	JUNE	JULY	AUG.	SEPT.	OCT.	NOV.	DEC.
331 PRIMARY METAL MFG.	1	1	0	0	0	0	0	0	0	0	0	0	0
332 FAB. METAL PRODUCTS	20	0	1	4	1	2	3	2	2	1	2	2	0
333 MACHINERY MFG.	10	0	3	1	1	0	2	1	1	0	1	0	0
334 COMPUTER & ELEC. PRD	2	0	0	1	0	0	0	1	0	0	0	0	0
335 ELEC. EQUIP. & APPL.	3	1	0	0	0	0	0	0	0	0	0	0	2
336 TRANSP. EQUIPMENT	13	1	2	2	1	2	1	0	2	0	0	1	1
337 FURNITURE & REL PROD	17	1	4	2	0	0	3	1	4	2	0	0	0
339 MISC.MANUFACTURING	10	1	1	1	0	1	2	1	1	0	1	0	1
WHOLESALE TRADE	478	49	47	46	35	42	62	38	41	43	27	12	36
423 DURABLE GDS. WHLSALE	118	16	9	8	11	9	9	15	14	5	10	4	8
424 NONDURABLE WHLSALE	57	3	4	8	3	9	7	4	8	1	4	0	6
425 ELECTR. AGTS & BROKR	303	30	34	30	21	24	46	19	19	37	13	8	22
RETAIL TRADE	635	73	64	57	53	48	61	57	74	33	43	24	48
441 MTR VEHICLE & PARTS	62	4	8	5	5	5	8	3	8	4	2	3	7
442 FURNITURE STORES	47	6	5	2	4	8	3	5	7	3	2	0	2
443 ELECT. & APPL. STORE	18	1	0	4	1	2	1	2	4	0	1	1	1
444 BLDG MTL & GARDEN	32	4	3	5	4	3	3	4	2	1	0	0	3
445 FOOD & BEVERAGE STOR	78	11	13	6	4	3	9	6	9	2	9	3	3
446 HEALTH & PRSNL CARE	38	5	3	4	2	2	6	2	1	5	3	2	3
447 GASOLINE STATIONS	125	14	9	9	19	4	10	7	20	6	9	6	12
448 CLOTHING & ACCESS.	80	9	9	7	7	5	4	11	8	6	5	4	5
451 SPRT GDS HOBBY BOOKS	29	3	2	3	0	3	4	3	5	1	4	1	0
452 GENL. MERCHANDISE	8	5	1	0	0	0	0	1	0	0	1	0	0
453 MISC. STORE RETAIL	93	8	8	9	6	12	10	10	8	4	6	3	9
454 NONSTORE RETAILERS	25	3	3	3	1	1	3	3	2	1	1	1	3
TRANSPORTATION & WAREHOUS	316	44	38	26	19	29	32	22	23	19	23	12	29
481 AIR TRANSPORTATION	6	1	0	2	0	0	1	0	0	0	2	0	0
483 WATER TRANSPORTATION	2	0	0	0	0	0	0	0	0	1	1	0	0
484 TRUCK TRANSPORTATION	203	26	32	19	13	19	18	13	14	10	13	9	17
485 TRANSIT & GRND. TRAN	14	3	1	1	1	2	1	1	0	1	2	0	1
486 PIPELINE TRANSPORT	1	0	0	0	0	0	0	0	0	1	0	0	0
487 SCENIC & SIGHTSEEING	1	0	0	0	0	0	1	0	0	0	0	0	0

TABLE VII-A

BUSINESS BIRTHS BY NAICS SECTOR & SUBSECTOR BY MONTH  
2008

NAICS SECTOR & SUBSECTOR	TOTAL BIRTHS	BIRTHS PER MONTH											
		JAN.	FEB.	MAR.	APR.	MAY	JUNE	JULY	AUG.	SEPT.	OCT.	NOV.	DEC.
488 TRANSP. SUPPORT	37	5	1	3	1	5	6	4	2	0	3	1	6
491 POSTAL SERVICE	2	0	1	0	0	0	1	0	0	0	0	0	0
492 COURIERS & MESSENGR	22	5	1	1	1	2	1	3	2	3	1	1	1
493 WAREHOUSING & STORAG	28	4	2	0	3	1	3	1	5	3	1	1	4
INFORMATION	50	4	7	4	3	1	9	3	6	6	3	1	3
511 PUBLISH EXCP INTERNET	10	0	1	0	3	1	1	1	1	1	1	0	0
512 MOTION PIC & SOUND	10	1	1	2	0	0	2	0	1	3	0	0	0
515 BROADCASTING	6	0	0	0	0	0	1	0	3	0	0	1	1
516 INTERNET BROADCAST PUBLS	1	0	0	1	0	0	0	0	0	0	0	0	0
517 TELECOMMUNICATIONS	14	3	0	1	0	0	5	1	0	1	1	0	2
518 ISPS SEARCH DATA PRC	4	0	3	0	0	0	0	1	0	0	0	0	0
519 OTHER INFO SERVICES	5	0	2	0	0	0	0	0	1	1	1	0	0
FINANCE & INSURANCE	235	28	35	25	16	11	25	16	15	16	19	8	21
521 MONETARY AUTHORITIES	0	0	0	0	0	0	0	0	0	0	0	0	0
522 CREDIT INTERMEDIATN	63	5	9	6	1	3	7	5	4	5	4	3	11
523 FINANCIAL INVESTMENT	28	5	5	4	0	2	4	1	1	2	3	0	1
524 INSURANCE CARRIERS	118	16	18	11	14	5	12	9	10	4	10	4	5
525 FUNDS, TRUSTS, & OTH	26	2	3	4	1	1	2	1	0	5	2	1	4
REAL ESTATE & RENTAL & LE	201	28	25	17	16	19	24	19	16	15	9	5	8
531 REAL ESTATE	175	24	24	17	14	16	14	19	16	13	9	4	5
532 RENTAL & LEASING SRV	24	3	1	0	2	3	9	0	0	2	0	1	3
533 LESSORS INTANGIBLE	2	1	0	0	0	0	1	0	0	0	0	0	0
PROFESSIONAL & TECHNICAL	673	75	75	85	46	41	81	72	48	45	37	15	53
541 PROFESNL & TECH SERV	673	75	75	85	46	41	81	72	48	45	37	15	53
MGMT. OF COMPANIES & ENTE	35	2	3	4	4	3	5	5	4	3	1	0	1
551 MGMT OF COMPANIES	35	2	3	4	4	3	5	5	4	3	1	0	1
ADMINISTRATIVE & WASTE SE	459	38	46	43	35	36	61	41	48	29	27	24	31
561 ADMIN. & SUPPORT	426	35	44	39	35	34	53	39	46	28	23	21	29
562 WASTE MGMT.	33	3	2	4	0	2	8	2	2	1	4	3	2
EDUCATIONAL SERVICES	83	5	8	6	6	10	10	6	7	11	5	1	8
611 EDUCATIONAL SERVICES	83	5	8	6	6	10	10	6	7	11	5	1	8
HEALTH CARE & SOCIAL ASSI	395	45	45	32	22	26	50	41	36	27	28	11	32

TABLE VII-A

BUSINESS BIRTHS BY NAICS SECTOR & SUBSECTOR BY MONTH  
2008

NAICS SECTOR & SUBSECTOR	TOTAL BIRTHS	BIRTHS PER MONTH											
		JAN.	FEB.	MAR.	APR.	MAY	JUNE	JULY	AUG.	SEPT.	OCT.	NOV.	DEC.
621 AMBULATORY HEALTH SV	256	31	28	25	12	14	29	31	20	13	23	7	23
622 HOSPITALS	7	1	1	0	1	0	0	1	2	1	0	0	0
623 NURSING & RESID CARE	22	4	2	2	0	2	3	5	0	0	1	1	2
624 SOCIAL ASSISTANCE	110	9	14	5	9	10	18	4	14	13	4	3	7
ARTS, ENTERTAINMENT & REC	86	7	6	7	5	4	11	14	8	6	7	6	5
711 PERF. ARTS & SPORTS	26	3	2	4	1	1	4	4	0	1	2	2	2
712 MUSEUMS, PARKS HIST.	2	0	0	0	0	0	0	0	0	0	1	1	0
713 GAMBLING, REC & AMUS	58	4	4	3	4	3	7	10	8	5	4	3	3
ACCOMMODATION & FOOD SERV	455	45	37	33	39	38	58	46	61	24	26	11	37
721 ACCOMMODATION	59	7	2	2	6	6	6	4	9	4	8	1	4
722 FOOD SRVC & DRINKING	396	38	35	31	33	32	52	42	52	20	18	10	33
OTHER SERVICES	497	47	59	52	42	37	57	46	49	34	30	14	30
811 REPAIR & MAINT.	169	17	13	15	12	13	21	17	18	15	9	5	14
812 PERSONAL & LAUNDRY	98	9	11	9	8	8	11	10	10	5	7	2	8
813 MEMBERSHIP ASSNS.	46	1	4	8	1	5	8	3	4	5	2	2	3
814 PRIVATE HOUSEHOLDS	184	20	31	20	21	11	17	16	17	9	12	5	5
PUBLIC ADMINISTRATION	5	0	0	2	1	0	0	0	0	1	0	0	1
921 EXEC. LEG. GNL. GOVT	1	0	0	1	0	0	0	0	0	0	0	0	0
922 JUSTICE PBL ORDER	3	0	0	1	0	0	0	0	0	1	0	0	1
923 ADMIN. HUMAN RESOURCE PGMS	1	0	0	0	1	0	0	0	0	0	0	0	0
924 ADMIN. ENVIRONMENTAL PGMS	0	0	0	0	0	0	0	0	0	0	0	0	0
926 ADMIN. ECONOMIC PGMS	0	0	0	0	0	0	0	0	0	0	0	0	0
NONCLASSIFIABLE	19	1	5	1	0	1	5	1	1	2	1	0	1
999 NONCLASSIFIABLE	19	1	5	1	0	1	5	1	1	2	1	0	1

TABLE VII-B

BUSINESS DEATHS BY NAICS SECTOR & SUBSECTOR BY MONTH  
2008

NAICS SECTOR & SUBSECTOR	TOTAL DEATHS	DEATHS PER MONTH											
		JAN.	FEB.	MAR.	APR.	MAY	JUNE	JULY	AUG.	SEPT.	OCT.	NOV.	DEC.
GRAND TOTAL	4,485	333	275	247	347	379	393	293	351	466	541	479	381
AGRI., FORESTRY, FISHING,	118	11	8	8	5	5	10	4	11	17	15	13	11
111 CROP PRODUCTION	17	2	0	0	0	1	1	0	0	5	4	1	3
112 ANIMAL PRODUCTION	16	0	0	3	1	2	3	1	0	0	3	2	1
113 FORESTRY & LOGGING	62	9	4	3	4	2	4	3	10	8	4	9	2
114 FISHING HUNTING TRAP	1	0	0	0	0	0	0	0	0	0	0	0	1
115 AGR & FRSTRY SUPPORT	22	0	4	2	0	0	2	0	1	4	4	1	4
MINING	23	1	2	2	3	1	0	1	1	3	5	2	2
211 OIL & GAS EXTRACTION	3	0	0	0	1	0	0	0	1	0	0	0	1
212 MINING EXCPT OIL GAS	0	0	0	0	0	0	0	0	0	0	0	0	0
213 SUPPORT FOR MINING	20	1	2	2	2	1	0	1	0	3	5	2	1
UTILITIES	7	1	0	0	0	1	1	0	1	1	0	1	1
221 UTILITIES	7	1	0	0	0	1	1	0	1	1	0	1	1
CONSTRUCTION	672	56	39	33	51	55	61	40	59	64	71	86	57
236 CONSTR. OF BUILDINGS	241	22	16	10	18	17	23	15	18	21	19	38	24
237 HVY & CIVIL ENG CONS	71	3	6	4	1	10	6	5	11	7	7	7	4
238 SPECIALTY TR CONTR.	360	31	17	19	32	28	32	20	30	36	45	41	29
MANUFACTURING	168	12	10	14	14	14	12	11	11	20	25	14	11
311 FOOD MANUFACTURING	11	0	1	1	1	0	0	3	0	0	3	1	1
312 BEVG. & TOBACCO MFG.	2	0	0	0	1	0	0	0	0	1	0	0	0
313 TEXTILE MILLS	1	0	0	0	0	1	0	0	0	0	0	0	0
314 TEXTILE PRODUCT MILL	5	0	0	0	1	0	0	1	0	1	1	1	0
315 APPAREL MFG.	1	0	0	0	0	1	0	0	0	0	0	0	0
316 LEATHER & ALLIED PRD	0	0	0	0	0	0	0	0	0	0	0	0	0
321 WOOD PRODUCT MFG.	15	3	2	1	0	1	0	1	2	1	3	1	0
322 PAPER MFG.	3	0	0	0	0	0	1	0	1	1	0	0	0
323 PRINTING & SUPPORT	13	1	1	3	0	0	1	1	1	2	3	0	0
324 PETROL & COAL PROD	1	0	0	0	0	1	0	0	0	0	0	0	0
325 CHEMICAL MFG.	6	1	0	1	0	0	2	0	0	0	1	0	1
326 PLASTICS & RUBBER	11	1	2	0	2	0	3	0	0	1	1	0	1
327 NONMETAL MINERAL MFG	10	1	0	0	0	1	1	1	0	3	2	0	1

TABLE VII-B

BUSINESS DEATHS BY NAICS SECTOR & SUBSECTOR BY MONTH  
2008

NAICS SECTOR & SUBSECTOR	TOTAL DEATHS	DEATHS PER MONTH											
		JAN.	FEB.	MAR.	APR.	MAY	JUNE	JULY	AUG.	SEPT.	OCT.	NOV.	DEC.
331 PRIMARY METAL MFG.	2	0	1	0	0	0	0	0	0	1	0	0	0
332 FAB. METAL PRODUCTS	16	0	1	1	3	1	0	1	2	2	1	4	0
333 MACHINERY MFG.	4	0	0	1	0	0	0	0	0	1	0	2	0
334 COMPUTER & ELEC. PRD	3	1	0	0	1	0	0	0	0	1	0	0	0
335 ELEC. EQUIP. & APPL.	2	0	0	0	1	1	0	0	0	0	0	0	0
336 TRANSP. EQUIPMENT	3	1	0	0	0	0	1	0	0	1	0	0	0
337 FURNITURE & REL PROD	40	3	1	4	3	4	2	1	3	3	8	3	5
339 MISC.MANUFACTURING	19	0	1	2	1	3	1	2	2	1	2	2	2
WHOLESALE TRADE	268	23	22	25	9	27	20	14	21	43	23	28	13
423 DURABLE GDS. WHLSALE	74	8	1	6	2	5	8	5	3	14	7	8	7
424 NONDURABLE WHLSALE	47	4	5	6	1	5	1	1	4	5	9	5	1
425 ELECTR. AGTS & BROKR	147	11	16	13	6	17	11	8	14	24	7	15	5
RETAIL TRADE	643	39	33	36	59	64	56	46	32	64	68	74	72
441 MTR VEHICLE & PARTS	84	7	6	5	4	7	6	8	2	7	11	12	9
442 FURNITURE STORES	54	4	1	6	7	6	5	3	6	1	6	5	4
443 ELECT. & APPL. STORE	29	0	1	2	2	7	4	1	2	2	3	3	2
444 BLDG MTL & GARDEN	35	0	2	1	6	5	2	4	0	2	5	6	2
445 FOOD & BEVERAGE STOR	64	6	3	6	4	6	8	4	7	8	3	6	3
446 HEALTH & PRSNL CARE	26	1	4	0	2	3	0	1	1	3	5	4	2
447 GASOLINE STATIONS	113	8	8	5	9	11	11	5	5	12	14	10	15
448 CLOTHING & ACCESS.	69	4	3	3	5	8	4	6	3	4	11	6	12
451 SPRT GDS HOBBY BOOKS	38	1	1	2	3	3	3	5	2	5	4	4	5
452 GENL. MERCHANDISE	13	0	2	0	3	0	4	0	0	1	0	3	0
453 MISC. STORE RETAIL	100	8	2	6	10	7	7	7	3	16	5	13	16
454 NONSTORE RETAILERS	18	0	0	0	4	1	2	2	1	3	1	2	2
TRANSPORTATION & WAREHOUS	295	24	15	11	26	33	21	22	27	30	37	28	21
481 AIR TRANSPORTATION	5	0	0	1	1	0	0	1	0	1	1	0	0
483 WATER TRANSPORTATION	0	0	0	0	0	0	0	0	0	0	0	0	0
484 TRUCK TRANSPORTATION	225	18	11	8	19	26	17	17	20	22	27	21	19
485 TRANSIT & GRND. TRAN	10	0	0	0	1	1	1	0	2	2	1	1	1
486 PIPELINE TRANSPORT	2	0	0	0	0	0	1	0	1	0	0	0	0
487 SCENIC & SIGHTSEEING	0	0	0	0	0	0	0	0	0	0	0	0	0

TABLE VII-B

BUSINESS DEATHS BY NAICS SECTOR & SUBSECTOR BY MONTH  
2008

NAICS SECTOR & SUBSECTOR	TOTAL DEATHS	DEATHS PER MONTH											
		JAN.	FEB.	MAR.	APR.	MAY	JUNE	JULY	AUG.	SEPT.	OCT.	NOV.	DEC.
488 TRANSP. SUPPORT	32	4	3	0	2	4	2	4	2	2	3	5	1
491 POSTAL SERVICE	2	0	0	0	0	0	0	0	0	1	1	0	0
492 COURIERS & MESSENGR	9	2	0	1	2	0	0	0	2	1	1	0	0
493 WAREHOUSING & STORAG	10	0	1	1	1	2	0	0	0	1	3	1	0
INFORMATION	31	2	2	3	3	3	4	2	1	3	5	3	0
511 PUBLISH EXCP INTERNET	7	1	0	1	0	2	0	0	1	0	1	1	0
512 MOTION PIC & SOUND	8	1	0	0	1	0	3	1	0	1	1	0	0
515 BROADCASTING	7	0	1	0	2	0	1	0	0	1	0	2	0
516 INTERNET BROADCAST PUBLS	1	0	0	1	0	0	0	0	0	0	0	0	0
517 TELECOMMUNICATIONS	6	0	1	1	0	1	0	0	0	1	2	0	0
518 ISPS SEARCH DATA PRC	1	0	0	0	0	0	0	1	0	0	0	0	0
519 OTHER INFO SERVICES	1	0	0	0	0	0	0	0	0	0	1	0	0
FINANCE & INSURANCE	224	14	12	16	18	20	16	19	16	28	25	25	15
522 CREDIT INTERMEDIATN	105	10	5	7	10	11	7	12	4	12	9	11	7
523 FINANCIAL INVESTMENT	23	1	3	2	2	2	3	0	3	1	2	3	1
524 INSURANCE CARRIERS	76	3	2	7	4	4	4	7	8	13	11	8	5
525 FUNDS, TRUSTS, & OTH	20	0	2	0	2	3	2	0	1	2	3	3	2
REAL ESTATE & RENTAL & LE	171	7	10	10	14	16	12	11	20	12	30	18	11
531 REAL ESTATE	149	7	8	8	13	14	9	6	20	10	29	15	10
532 RENTAL & LEASING SRV	20	0	2	2	1	1	2	5	0	2	1	3	1
533 LESSORS INTANGIBLE	2	0	0	0	0	1	1	0	0	0	0	0	0
PROFESSIONAL & TECHNICAL	392	34	28	19	24	34	33	22	40	36	51	33	38
541 PROFESNL & TECH SERV	392	34	28	19	24	34	33	22	40	36	51	33	38
MGMT. OF COMPANIES & ENTE	22	1	0	0	1	2	6	4	2	2	2	2	0
551 MGMT OF COMPANIES	22	1	0	0	1	2	6	4	2	2	2	2	0
ADMINISTRATIVE & WASTE SE	283	24	21	12	19	17	20	20	15	35	42	37	21
561 ADMIN. & SUPPORT	255	21	18	12	17	15	18	19	13	31	40	34	17
562 WASTE MGMT.	28	3	3	0	2	2	2	1	2	4	2	3	4
EDUCATIONAL SERVICES	29	2	1	2	2	1	2	3	0	4	3	5	4
611 EDUCATIONAL SERVICES	29	2	1	2	2	1	2	3	0	4	3	5	4
HEALTH CARE & SOCIAL ASSI	251	14	17	13	17	19	25	23	20	26	30	22	25
621 AMBULATORY HEALTH SV	160	9	7	10	9	15	16	17	14	17	19	12	15

TABLE VII-B

BUSINESS DEATHS BY NAICS SECTOR & SUBSECTOR BY MONTH  
2008

NAICS SECTOR & SUBSECTOR	TOTAL DEATHS	DEATHS PER MONTH											
		JAN.	FEB.	MAR.	APR.	MAY	JUNE	JULY	AUG.	SEPT.	OCT.	NOV.	DEC.
622 HOSPITALS	4	0	2	0	0	0	0	0	0	1	0	1	0
623 NURSING & RESID CARE	16	2	2	0	2	0	0	1	0	0	3	3	3
624 SOCIAL ASSISTANCE	71	3	6	3	6	4	9	5	6	8	8	6	7
ARTS, ENTERTAINMENT & REC	59	4	4	3	6	2	5	4	4	6	9	9	3
711 PERF. ARTS & SPORTS	15	1	1	2	2	0	0	0	1	3	3	2	0
712 MUSEUMS, PARKS HIST.	0	0	0	0	0	0	0	0	0	0	0	0	0
713 GAMBLING, REC & AMUS	44	3	3	1	4	2	5	4	3	3	6	7	3
ACCOMMODATION & FOOD SERV	347	26	17	19	35	36	36	19	25	37	32	36	29
721 ACCOMMODATION	24	2	1	1	2	1	5	1	1	2	4	2	2
722 FOOD SRVC & DRINKING	323	24	16	18	33	35	31	18	24	35	28	34	27
OTHER SERVICE EXCEPT PUBL	445	35	32	19	39	27	47	24	43	30	65	42	42
811 REPAIR & MAINT.	133	8	10	6	6	7	12	9	14	9	24	17	11
812 PERSONAL & LAUNDRY	74	4	8	5	6	4	10	6	6	5	11	5	4
813 MEMBERSHIP ASSNS.	29	3	0	1	1	3	6	1	3	4	2	2	3
814 PRIVATE HOUSEHOLDS	209	20	14	7	26	13	19	8	20	12	28	18	24
PUBLIC ADMINISTRATION	2	0	0	0	1	0	1	0	0	0	0	0	0
921 EXEC. LEG. GNL. GOVT	1	0	0	0	1	0	0	0	0	0	0	0	0
922 JUSTICE PBL ORDER	0	0	0	0	0	0	0	0	0	0	0	0	0
924 ADMIN. ENVRION. PGM	1	0	0	0	0	0	1	0	0	0	0	0	0
925 COMM. & HOUSING ADMIN.	0	0	0	0	0	0	0	0	0	0	0	0	0
926 ADMIN. ECONOMIC PGMS	0	0	0	0	0	0	0	0	0	0	0	0	0
NONCLASSIFIABLE	35	3	2	2	1	2	5	4	2	5	3	1	5
999 NONCLASSIFIABLE	35	3	2	2	1	2	5	4	2	5	3	1	5



## DEFINITION OF TERMS

Accession Rate - Ratio of business births to active establishments.

Business Birth - The establishment of a liable employer reporting unit. Includes new firms and reopened accounts.

Business Death - A termination of Liability of a reporting unit - a separation from coverage without a successor.

Change of Ownership - A transfer of ownership of an existing firm by the addition or loss of a partner, incorporation or disincorporation, merger, transfer, or any other type of legal reorganization resulting in the termination of an employer account and the establishment of a successor account. Changes in ownership are not included in business births and business deaths.

Covered Employer - A business enterprise covered under the Mississippi Employment Security Law. In 1977, the law required coverage of all employers in non-exempt industries which employ one or more workers for twenty different weeks in the current or preceding calendar year, those paying wages of \$1,500 or more during a quarter, state-owned hospitals and state-owned institutions of higher learning, and most non-profit institutions. Employers brought under coverage as a result of the amendments to the Mississippi Employment Security Law effective January 1, 1978 were (1) agricultural employers with 10 or more workers in 20 weeks or who paid \$20,000 or more in quarterly wages for agricultural workers; (2) employers who paid \$1,000 or more in a calendar quarter for domestic services; (3) all agencies of the State and Local Government; and (4) non-profit elementary and secondary schools.

Covered Employment - The number of workers for firms registered under the Mississippi Employment Security Law who earned wages during the pay period including the twelfth of the month.

Covered Wages - All pay to covered workers for personal services, including commissions and bonuses and the cash value of all pay in any medium other than cash.

Establishment - A single business enterprise operating in one location; one firm or reporting unit may consist of a number of separate establishments.

Reporting Unit - A business enterprise which submits a quarterly contribution report. In some cases, one employer may have several reporting units.

Separation Rate - Ratio of business deaths to active establishments.