



MISSISSIPPI DEPARTMENT of EMPLOYMENT SECURITY

Increasing Employment in Mississippi

Mississippi Business Population 2011



**Births, Deaths, and
Changes in Ownership**

NOTICE OF CHANGE IN PUBLICATION DATA RELEASED

This edition of Mississippi Business Population has been printed without covered employment data. The covered employment tables have been excluded in order to release the business population data earlier.

The removed tables are:

- Average Monthly Covered Employment, Total Annual Wages and Average Weekly Insured Unemployment
- Average Monthly Covered Employment by NAICS Sector & Percent Change
- Average Monthly Covered Employment & Percent Change for Selected Manufacturing Subsectors
- Size of Firm for Covered Employment for Fourth Quarter

The excluded data will be released in the Covered Employment and Wages publication, which will be printed later this year.

FOREWORD

This is the forty-fifth in a series of publications giving business population data for Mississippi by industry and by county for firms covered under the Mississippi Employment Security Law. The first release carried data for 1960 and 1961. Beginning with the 1972 issue, publication was shifted to an annual basis. Publications issued prior to 1972 covered two-year periods.

Information of this nature provides an indication of shifts in industrial patterns, showing the kinds of new businesses being established and the kinds which are declining in significance. Knowledge of these shifts, which affect employment opportunities, is necessary for accurate assessment of the economic health of an area and for understanding the workings of the labor market. Such knowledge leads to a more effective administration of the Employment Security Programs and is useful to groups concerned with industrial development in the state.

Beginning with the 2007 edition, the industrial codes used are those contained in the North American Industry Classification System (NAICS) Manual issued by the Executive Office of the President, Office of Management and Budget, 2007. In the 2002 through 2006 editions, the industrial codes used were from the NAICS, 2002 codes. Prior to the 2002 edition, the industrial codes used were from the Standard Industrial Classification (SIC) Manual. Because of extensive changes from SIC to NAICS, there will be no historical comparisons. Information about NAICS can be accessed at census.gov.

prepared by the
Labor Market Information Department
P.O. Box 1699, Jackson, MS 39215-1699
mdes.ms.gov - lmi-info@mdes.ms.gov

Equal Opportunity Employer/Program
Auxiliary aids and services available upon request
to individuals with disabilities: TTY 800-582-2233

TABLE OF CONTENTS

	PAGE
Table 1 - Business Births & Deaths by NAICS Sector 2011	1
Graph - Business Births and Deaths 2011	2
Table 2 - Active Establishments & Business Births & Deaths by NAICS Sector & Subsector	3
Table 3 - Accession & Separation Rates by NAICS Sector	7
Table 4 - Active Establishments, Business Births & Deaths, & Accession & Separation Rates by County	8
Table 5 - Business Births & Deaths by Type of Organization	11
Table 6 - Business Deaths by Length of Life	12
Table 7 - Business Deaths by NAICS Sector & by Length of Life	13
Table 8 - Business Deaths by Length of Life & by Type of Organization	14
Table 9 - Active Establishments & Changes in Ownership by NAICS Sector	15
Table 10 - Changes in Ownership by Type of Organization	16
Table 11 - Changes in Ownership by Length of Life	16
Table 12 - Types of Business Organizations	17
Table 13 - Business Births & Deaths by County & by Industry	18
Table 14 - Business Deaths by County & by Length of Life	21
Table 15 - Changes in Ownership by County & by Industry	24
Table 16 - Business Births by County & by Month	27
Table 17 - Business Deaths by County & by Month	30
Table 18 - Business Births by NAICS Sector & Subsector by Month	33
Table 19 - Business Deaths by NAICS Sector & Subsector by Month	37
List of North American Industry Classification System (NAICS) Codes and Titles	41
Definition of Terms	43

**TABLE 1
BUSINESS BIRTHS AND DEATHS
BY NAICS SECTOR 2011**

NAICS SECTOR	BIRTHS		DEATHS		NET GAIN OR LOSS	RATIO BIRTHS TO DEATHS
	NO.	PERCENT OF TOTAL	NO.	PERCENT OF TOTAL		
TOTAL	5,365	100.0	4,684	100.0	681	1.1
AGRICULTURE, FORESTRY, FISHING & HUNTING	98	1.8	92	2.0	6	1.1
MINING, QUARRYING & OIL & GAS EXTRACTION	83	1.5	38	0.8	45	2.2
UTILITIES	10	0.2	5	0.1	5	2.0
CONSTRUCTION	624	11.6	656	14.0	(32)	1.0
MANUFACTURING	128	2.4	153	3.3	(25)	0.8
WHOLESALE TRADE	357	6.7	260	5.6	97	1.4
RETAIL TRADE	595	11.1	650	13.9	(55)	0.9
TRANSPORTATION & WAREHOUSING	337	6.3	274	5.8	63	1.2
INFORMATION	59	1.1	42	0.9	17	1.4
FINANCE & INSURANCE	208	3.9	198	4.2	10	1.1
REAL ESTATE & RENTAL & LEASING	172	3.2	155	3.3	17	1.1
PROFESSIONAL, SCIENTIFIC & TECHNICAL SERVICES	709	13.2	468	10.0	241	1.5
MANAGEMENT OF COMPANIES & ENTERPRISES	45	0.8	17	0.4	28	2.6
ADMIN. & SUPPORT & WASTE & REMEDIATION SERVICES	475	8.9	354	7.6	121	1.3
EDUCATIONAL SERVICES	89	1.7	55	1.2	34	1.6
HEALTH CARE & SOCIAL ASSISTANCE	354	6.6	319	6.8	35	1.1
ARTS, ENTERTAINMENT & RECREATION	75	1.4	44	0.9	31	1.7
ACCOMMODATION & FOOD SERVICES	488	9.1	403	8.6	85	1.2
OTHER SERVICES (EXCEPT PUBLIC ADMIN.)	431	8.0	473	10.1	(42)	0.9
PUBLIC ADMINISTRATION	5	0.1	2		3	2.5
NONCLASSIFIED	23	0.4	26	0.6	(3)	0.9

BUSINESS BIRTHS AND DEATHS 2011

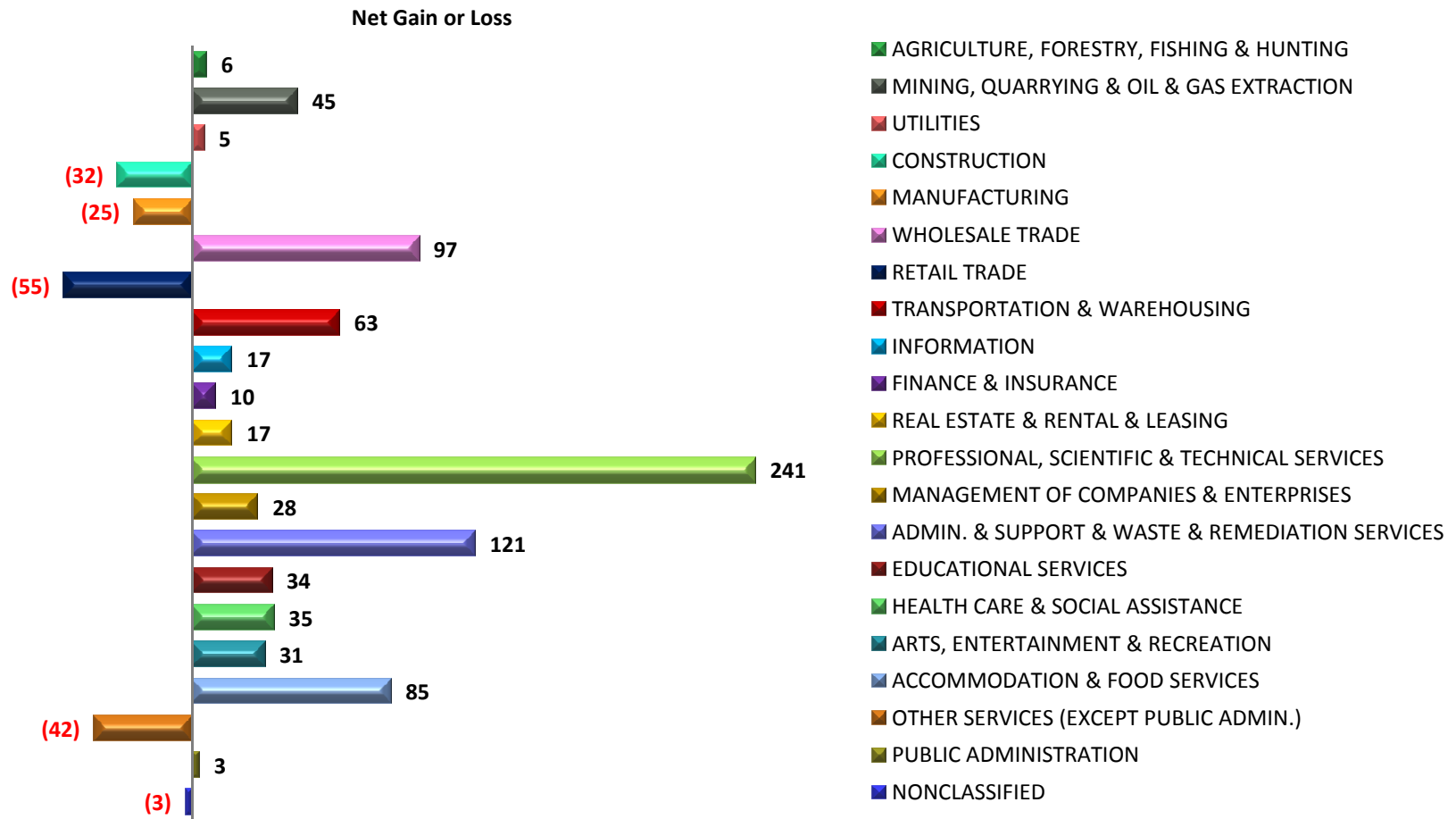


TABLE 2
ACTIVE ESTABLISHMENTS DURING THE FOURTH QUARTER 2010 AND
BUSINESS BIRTHS AND DEATHS BY NAICS SECTOR & SUBSECTOR 2011

NAICS SECTOR & SUBSECTOR	ACTIVE ESTABLISHMENTS FOURTH QUARTER 2010	2011		
		BIRTHS	DEATHS	NET GAIN OR LOSS
TOTAL	67,849	5,365	4,684	681
AGRICULTURE, FORESTRY, FISHING & HUNTING	1,737	98	92	6
111 CROP PRODUCTION	623	37	18	19
112 ANIMAL PRODUCTION	178	7	10	(3)
113 FORESTRY & LOGGING	501	28	37	(9)
114 FISHING HUNTING TRAPPING	15	4	2	2
115 AGR. & FORESTRY SUPPORT	420	22	25	(3)
MINING, QUARRYING & OIL & GAS EXTRACTION	498	83	38	45
211 OIL & GAS EXTRACTION	85	9	5	4
212 MINING (EXCEPT OIL & GAS)	59	8	0	8
213 SUPPORT FOR MINING	354	66	33	33
UTILITIES	573	10	5	5
221 UTILITIES	573	10	5	5
CONSTRUCTION	5,983	624	656	(32)
236 CONSTR. OF BUILDINGS	1,584	176	198	(22)
237 HEAVY & CIVIL ENGINEERING CONSTRUCTION	858	85	69	16
238 SPECIALTY TRADE CONTRACTORS	3,541	363	389	(26)
MANUFACTURING	2,569	128	153	(25)
311 FOOD MANUFACTURING	203	19	8	11
312 BEVERAGE & TOBACCO PRODUCT MFG.	31	1	1	0
313 TEXTILE MILLS	25	0	2	(2)
314 TEXTILE PRODUCT MILLS	56	3	4	(1)
315 APPAREL MFG.	41	1	4	(3)
316 LEATHER & ALLIED PRD. MFG.	4	0	2	(2)
321 WOOD PRODUCT MFG.	288	15	15	0
322 PAPER MFG.	58	2	3	(1)
323 PRINTING & REL. SUPPORT ACTIVITIES	170	10	9	1
324 PETROLEUM & COAL PRODUCTS MFG.	38	1	0	1
325 CHEMICAL MFG.	145	12	7	5
326 PLASTICS & RUBBER PRODUCTS MFG.	122	4	5	(1)

TABLE 2
ACTIVE ESTABLISHMENTS DURING THE FOURTH QUARTER 2010 AND
BUSINESS BIRTHS AND DEATHS BY NAICS SECTOR & SUBSECTOR 2011

NAICS SECTOR & SUBSECTOR	ACTIVE ESTABLISHMENTS FOURTH QUARTER 2010	2011		
		BIRTHS	DEATHS	NET GAIN OR LOSS
327 NONMETAL MINERAL PROD. MFG.	162	3	8	(5)
331 PRIMARY METAL MFG.	41	1	0	1
332 FABRICATED METAL PRODUCT MFG.	363	8	18	(10)
333 MACHINERY MFG.	165	4	2	2
334 COMPUTER & ELECTRONIC PRODUCT MFG.	35	3	1	2
335 ELEC. EQUIP. & APPL. & COMPONENT MFG.	46	1	3	(2)
336 TRANSPORTATION EQUIPMENT MFG.	127	14	13	1
337 FURNITURE & RELATED PRODUCT MFG.	270	20	31	(11)
339 MISC. MANUFACTURING	179	6	17	(11)
WHOLESALE TRADE	4,611	357	260	97
423 DURABLE GOODS WHOLESALE	1,807	71	72	(1)
424 NONDURABLE GOODS WHOLESALE	1,028	28	45	(17)
425 WHLS. ELECTRONIC MKTS & AGTS. & BROKERS	1,776	258	143	115
RETAIL TRADE	11,296	595	650	(55)
441 MOTOR VEHICLE & PARTS DEALERS	1,488	72	73	(1)
442 FURNITURE & HOME FURNISHING STORES	528	25	44	(19)
443 ELECTRONICS & APPLIANCE STORE	412	19	28	(9)
444 BLDG. MTL. & GARDEN EQUIP. & SUPPLIES DLRS.	877	34	45	(11)
445 FOOD & BEVERAGE STORES	1,027	79	76	3
446 HEALTH & PERSONAL CARE STORES	978	34	32	2
447 GASOLINE STATIONS	2,039	148	140	8
448 CLOTHING & CLOTHING ACCESSORIES STORES	1,169	58	63	(5)
451 SPRT. GDS. HOBBY BOOKS & MUSIC STORES	440	17	33	(16)
452 GENERAL MERCHANDISE	938	10	8	2
453 MISCELLANEOUS STORE RETAILERS	1,125	74	97	(23)
454 NONSTORE RETAILERS	275	25	11	14
TRANSPORTATION & WAREHOUSING	2,471	337	274	63
481 AIR TRANSPORTATION	43	1	2	(1)
482 RAIL TRANSPORTATION	1	0	1	(1)
483 WATER TRANSPORTATION	19	3	0	3
484 TRUCK TRANSPORTATION	1,467	209	188	21

TABLE 2
ACTIVE ESTABLISHMENTS DURING THE FOURTH QUARTER 2010 AND
BUSINESS BIRTHS AND DEATHS BY NAICS SECTOR & SUBSECTOR 2011

NAICS SECTOR & SUBSECTOR	ACTIVE ESTABLISHMENTS FOURTH QUARTER 2010	2011		
		BIRTHS	DEATHS	NET GAIN OR LOSS
485 TRANSIT & GROUND PASSENGER TRANSP.	102	12	8	4
486 PIPELINE TRANSPORTATION	81	1	2	(1)
487 SCENIC & SIGHTSEEING TRANSPORTATION	15	2	2	0
488 TRANSPORTATION SUPPORT	364	44	30	14
491 POSTAL SERVICE	8	1	1	0
492 COURIERS & MESSENGERS	152	47	25	22
493 WAREHOUSING & STORAGE	219	17	15	2
INFORMATION	1,164	59	42	17
511 PUBLISHING (EXCPT. INTERNET)	199	5	11	(6)
512 MOTION PIC. & SOUND RECORDING INDUS.	76	14	8	6
515 BROADCASTING (EXCPT. INTERNET)	133	5	2	3
517 TELECOMMUNICATIONS	476	6	8	(2)
518 DATA PROCESSING, HOSTING & REL. SERVICES	59	16	8	8
519 OTHER INFORMATION SERVICES	221	13	5	8
FINANCE & INSURANCE	4,629	208	198	10
521 MONETARY AUTHORITIES	2	1	0	1
522 CREDIT INTERMEDIATION & REL. ACTIVITIES	2,531	44	63	(19)
523 SECURITIES, COMMODITY, FINAN. INV. & REL.	378	27	22	5
524 INSURANCE CARRIERS & RELATED ACTIVITIES	1,642	105	94	11
525 FUNDS, TRUSTS & OTHER FINAN. VEHICLES	76	31	19	12
REAL ESTATE & RENTAL & LEASING	2,725	172	155	17
531 REAL ESTATE	2,161	151	125	26
532 RENTAL & LEASING SERV.	541	18	27	(9)
533 LESSORS OF INTANGIBLE ASSESTS	23	3	3	0
PROFESSIONAL SCIENTIFIC & TECHNICAL SERVICES	5,970	709	468	241
541 PROFESSIONAL, SCI. & TECHNICAL SERV.	5,970	709	468	241
MANAGEMENT OF COMPANIES & ENTERPRISES	480	45	17	28
551 MGMT. OF COMPANIES & ENTERPRISES	480	45	17	28
ADMIN. SUPP. & WASTE & REMEDIATION SERVICES	3,440	475	354	121
561 ADMINISTRATIVE & SUPPORT	3,179	449	322	127

TABLE 2
ACTIVE ESTABLISHMENTS DURING THE FOURTH QUARTER 2010 AND
BUSINESS BIRTHS AND DEATHS BY NAICS SECTOR & SUBSECTOR 2011

NAICS SECTOR & SUBSECTOR	ACTIVE ESTABLISHMENTS FOURTH QUARTER 2010	2011		
		BIRTHS	DEATHS	NET GAIN OR LOSS
562 WASTE MANAGEMENT	261	26	32	(6)
EDUCATIONAL SERVICES	1,251	89	55	34
611 EDUCATIONAL SERVICES	1,251	89	55	34
HEALTH CARE & SOCIAL ASSISTANCE	6,694	354	319	35
621 AMBULATORY HEALTH CARE SERVICES	4,225	225	185	40
622 HOSPITALS	133	4	4	0
623 NURSING & RESIDENTIAL CARE FACILITIES	428	23	20	3
624 SOCIAL ASSISTANCE	1,908	102	110	(8)
ARTS, ENTERTAINMENT & RECREATION	722	75	44	31
711 PERFORMING ARTS & SPEC. SPORTS & REL.	137	26	6	20
712 MUSEUMS, HIST. SITES & SIM. INSTITUTION	48	3	0	3
713 AMUSEMENT, GAMBLING & REC. IND.	537	46	38	8
ACCOMMODATION & FOOD SERVICES	5,022	488	403	85
721 ACCOMMODATION	780	40	33	7
722 FOOD SERVICES & DRINKING PLACES	4,242	448	370	78
OTHER SERVICE (EXCEPT PUBLIC ADMIN.)	5,025	431	473	(42)
811 REPAIR & MAINTENANCE	1,938	163	123	40
812 PERSONAL & LAUNDRY SERVICES	1,163	63	81	(18)
813 MEMBERSHIP ASSNS.	698	20	25	(5)
814 PRIVATE HOUSEHOLDS	1,226	185	244	(59)
PUBLIC ADMINISTRATION	989	5	2	3
921 EXEC., LEG. & GNL. GOVT. SUPPORT	377	3	1	2
922 JUSTICE, PUBLIC ORDER & SAFETY ACT.	107	1	0	1
923 ADMIN. HUMAN RESOURCE PGM.	217	0	0	0
924 ADMIN. ENVRION. QUAL. PGM.	144	1	0	1
925 COMM. & HOUSING ADMN.	5	0	1	(1)
926 ADMIN. ECONOMIC PGMs.	132	0	0	0
928 NATL. SECURITY & INTERNATIONAL AFFAIRS	7	0	0	0
NONCLASSIFIED	0	23	26	(3)
999 NONCLASSIFIED	0	23	26	(3)

TABLE 3
ACCESSION AND SEPARATION RATES*
BY NAICS SECTOR
2011

NAICS SECTOR	ACTIVE ESTABLISHMENTS 4TH QTR. 2010	2011	
		ACCESSION RATE	SEPARATION RATE
TOTAL	67,849	7.9	6.9
AGRICULTURE, FORESTRY, FISHING, HUNTING	1,737	5.6	5.3
MINING	498	16.7	7.6
UTILITIES	573	1.7	0.9
CONSTRUCTION	5,983	10.4	11.0
MANUFACTURING	2,569	5.0	6.0
WHOLESALE TRADE	4,611	7.7	5.6
RETAIL TRADE	11,296	5.3	5.8
TRANSPORTATION & WAREHOUSING	2,471	13.6	11.1
INFORMATION	1,164	5.1	3.6
FINANCE & INSURANCE	4,629	4.5	4.3
REAL ESTATE & RENTAL & LEASING	2,725	6.3	5.7
PROFESSIONAL & TECHNICAL SERVICES	5,970	11.9	7.8
MGMT. OF COMPANIES & ENTERPRISES	480	9.4	3.5
ADMINISTRATIVE & WASTE SERVICES	3,440	13.8	10.3
EDUCATIONAL SERVICES	1,251	7.1	4.4
HEALTH CARE & SOCIAL ASSISTANCE	6,694	5.3	4.8
ARTS, ENTERTAINMENT & RECREATION	722	10.4	6.1
ACCOMMODATION & FOOD SERVICES	5,022	9.7	8.0
OTHER SERVICE EXCEPT PUBLIC ADMIN.	5,025	8.6	9.4
PUBLIC ADMINISTRATION	989	0.5	0.2
NONCLASSIFIED	0	0.0	0.0

* BASED ON THE NUMBER OF ACTIVE ESTABLISHMENTS AS OF THE FOURTH QUARTER 2010

TABLE 4
ACTIVE ESTABLISHMENTS THE FOURTH QUARTER 2010
BUSINESS BIRTHS AND DEATHS,
AND ACCESSION AND SEPARATION RATES BY COUNTY 2011

COUNTY	ACTIVE ESTAB. 4TH QTR. 2010	2011				
		BIRTHS	DEATHS	NET GAIN OR LOSS	%	
					ACCESSION RATE	SEPARATION RATE
TOTAL	67,849	5,365	4,684	681	7.9	6.9
ADAMS	903	41	68	(27)	4.5	7.5
ALCORN	796	32	52	(20)	4.0	6.5
AMITE	203	9	10	(1)	4.4	4.9
ATTALA	394	17	23	(6)	4.3	5.8
BENTON	89	7	3	4	7.8	3.3
BOLIVAR	825	44	34	10	5.3	4.1
CALHOUN	298	15	15	0	5.0	5.0
CARROLL	124	3	9	(6)	2.4	7.2
CHICKASAW	371	22	18	4	5.9	4.8
CHOCTAW	140	11	8	3	7.8	5.7
CLAIBORNE	137	10	9	1	7.2	6.5
CLARKE	236	19	16	3	8.0	6.7
CLAY	369	21	24	(3)	5.6	6.5
COAHOMA	643	29	28	1	4.5	4.3
COPIAH	436	17	18	(1)	3.8	4.1
COVINGTON	331	20	18	2	6.0	5.4
DESOTO	2,500	207	194	13	8.2	7.7
FORREST	1,914	135	151	(16)	7.0	7.8
FRANKLIN	129	8	7	1	6.2	5.4
GEORGE	342	30	28	2	8.7	8.1
GREENE	135	6	3	3	4.4	2.2
GRENADA	538	13	23	(10)	2.4	4.2
HANCOCK	794	67	67	0	8.4	8.4
HARRISON	4,410	316	298	18	7.1	6.7
HINDS	6,020	374	425	(51)	6.2	7.0
HOLMES	301	10	14	(4)	3.3	4.6

TABLE 4
ACTIVE ESTABLISHMENTS THE FOURTH QUARTER 2010
BUSINESS BIRTHS AND DEATHS,
AND ACCESSION AND SEPARATION RATES BY COUNTY 2011

COUNTY	ACTIVE ESTAB. 4TH QTR. 2010	2011				
		BIRTHS	DEATHS	NET GAIN OR LOSS	%	
					ACCESSION RATE	SEPARATION RATE
HUMPHREYS	218	10	10	0	4.5	4.5
ISSAQUENA	40	1	0	1	2.5	0.0
ITAWAMBA	330	27	20	7	8.1	6.0
JACKSON	2,376	162	180	(18)	6.8	7.5
JASPER	258	10	10	0	3.8	3.8
JEFFERSON	82	4	4	0	4.8	4.8
JEFFERSON DAVIS	158	10	14	(4)	6.3	8.8
JONES	1,378	66	80	(14)	4.7	5.8
KEMPER	122	8	10	(2)	6.5	8.1
LAFAYETTE	1,105	81	96	(15)	7.3	8.6
LAMAR	1,302	74	96	(22)	5.6	7.3
LAUDERDALE	1,960	115	105	10	5.8	5.3
LAWRENCE	197	13	11	2	6.5	5.5
LEAKE	313	12	18	(6)	3.8	5.7
LEE	2,394	121	155	(34)	5.0	6.4
LEFLORE	847	35	37	(2)	4.1	4.3
LINCOLN	757	46	43	3	6.0	5.6
LOWNDES	1,539	84	73	11	5.4	4.7
MADISON	2,901	217	192	25	7.4	6.6
MARION	590	31	53	(22)	5.2	8.9
MARSHALL	415	31	27	4	7.4	6.5
MONROE	667	40	48	(8)	5.9	7.1
MONTGOMERY	230	13	15	(2)	5.6	6.5
NESHOBA	544	21	34	(13)	3.8	6.2
NEWTON	324	15	17	(2)	4.6	5.2
NOXUBEE	230	14	9	5	6.0	3.9
OKTIBBEHA	849	71	40	31	8.3	4.7
PANOLA	635	36	39	(3)	5.6	6.1

TABLE 4
ACTIVE ESTABLISHMENTS THE FOURTH QUARTER 2010
BUSINESS BIRTHS AND DEATHS,
AND ACCESSION AND SEPARATION RATES BY COUNTY 2011

COUNTY	ACTIVE ESTAB. 4TH QTR. 2010	2011				
		BIRTHS	DEATHS	NET GAIN OR LOSS	%	
					ACCESSION RATE	SEPARATION RATE
PEARL RIVER	823	56	61	(5)	6.8	7.4
PERRY	170	14	9	5	8.2	5.2
PIKE	1,060	49	63	(14)	4.6	5.9
PONTOTOC	459	28	30	(2)	6.1	6.5
PRENTISS	481	26	29	(3)	5.4	6.0
QUITMAN	152	3	3	0	1.9	1.9
RANKIN	3,506	236	192	44	6.7	5.4
SCOTT	515	20	26	(6)	3.8	5.0
SHARKEY	162	7	5	2	4.3	3.0
SIMPSON	443	18	30	(12)	4.0	6.7
SMITH	186	18	14	4	9.6	7.5
STONE	298	19	18	1	6.3	6.0
SUNFLOWER	557	30	19	11	5.3	3.4
TALLAHATCHIE	211	11	8	3	5.2	3.7
TATE	361	20	24	(4)	5.5	6.6
TIPPAH	336	13	20	(7)	3.8	5.9
TISHOMINGO	385	24	15	9	6.2	3.8
TUNICA	284	13	14	(1)	4.5	4.9
UNION	461	40	34	6	8.6	7.3
WALTHALL	243	16	18	(2)	6.5	7.4
WARREN	1,148	64	92	(28)	5.5	8.0
WASHINGTON	1,337	60	58	2	4.4	4.3
WAYNE	395	20	24	(4)	5.0	6.0
WEBSTER	180	14	13	1	7.7	7.2
WILKINSON	157	11	8	3	7.0	5.0
WINSTON	370	18	17	1	4.8	4.5
YALOBUSHA	201	13	9	4	6.4	4.4
YAZOO	449	25	25	0	5.5	5.5
UNCLASSIFIED	6,380	1,628	807	821	25.5	12.6

**TABLE 5
BUSINESS BIRTHS AND DEATHS
BY TYPE OF ORGANIZATION
2010 & 2011**

TYPE OF ORGANIZATION	2011					2010				
	BIRTHS		DEATHS		NET GAIN OR LOSS	BIRTHS		DEATHS		NET GAIN OR LOSS
	NO.	PERCENT OF TOTAL	NO.	PERCENT OF TOTAL		NO.	PERCENT OF TOTAL	NO.	PERCENT OF TOTAL	
TOTAL	5,365	100.0	4,684	100.0	681	5,198	100.0	5,132	100.0	66
CORPORATION	3,400	63.4	2,636	56.3	764	3,274	63.0	2,957	57.6	317
INDIVIDUAL OWNERSHIP	1,308	24.4	1,483	31.7	(175)	1,312	25.2	1,528	29.8	(216)
PARTNERSHIP	605	11.3	501	10.7	104	558	10.7	566	11.0	(8)
OTHERS	52	1.0	64	1.4	(12)	54	1.0	81	1.6	(27)

BUSINESS BIRTHS PERCENT OF TOTAL 2011

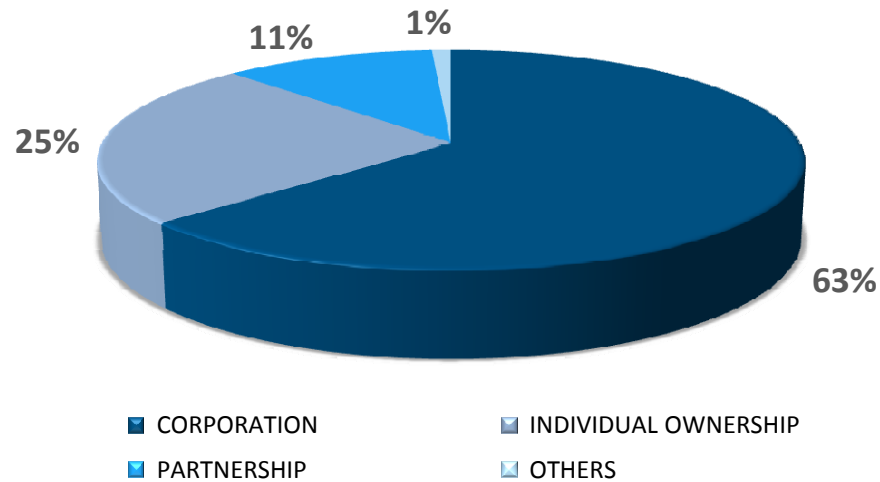


TABLE 6
BUSINESS DEATHS, BY LENGTH OF LIFE
2010 & 2011

LENGTH OF LIFE	2011		2010	
	BUSINESS DEATHS		BUSINESS DEATHS	
	NO.	PERCENT OF TOTAL	NO.	PERCENT OF TOTAL
TOTAL	4,684	100.0	5,132	100.0
LESS THAN 1 YEAR	1,135	24.2	1,254	24.4
1 YEAR, LESS THAN 2	694	14.8	803	15.6
2 YEARS, LESS THAN 3	483	10.3	657	12.8
3 YEARS, LESS THAN 4	399	8.5	398	7.8
4 YEARS, LESS THAN 5	290	6.2	294	5.7
5 YEARS, LESS THAN 6	210	4.5	241	4.7
6 YEARS, LESS THAN 10	565	12.1	524	10.2
10 YEARS AND OVER	908	19.4	961	18.7

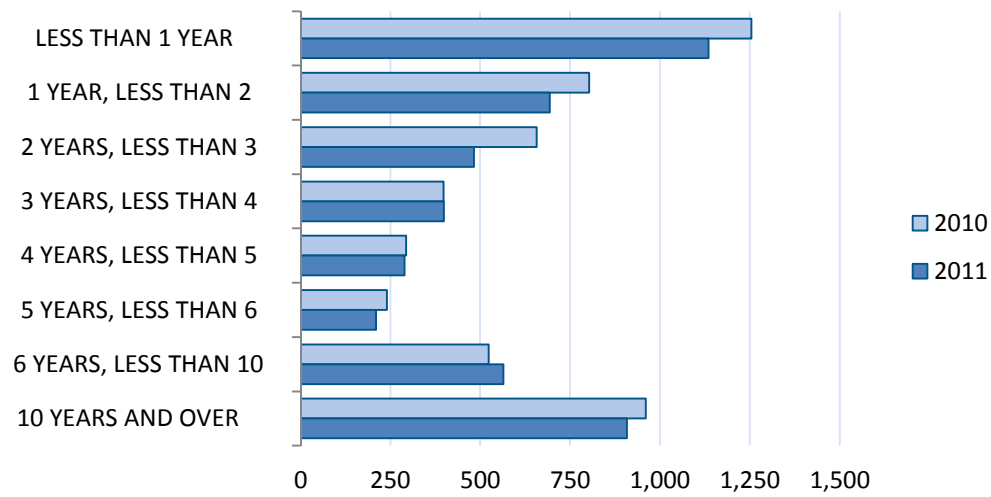


TABLE 7
BUSINESS DEATHS, BY NAICS SECTOR AND BY LENGTH OF LIFE
2011

NAICS SECTOR	DEATHS		LENGTH OF LIFE															
			< 1 YEAR		1 YEAR, < 2 YEARS		2 YEARS, < 3 YEARS		3 YEARS, < 4 YEARS		4 YEARS, < 5 YEARS		5 YEARS, < 6 YEARS		6 YEARS, < 10 YEARS		10 YEARS & OVER	
	NO.	% OF TOTAL	NO.	% OF TOTAL	NO.	% OF TOTAL	NO.	% OF TOTAL	NO.	% OF TOTAL	NO.	% OF TOTAL	NO.	% OF TOTAL	NO.	% OF TOTAL	NO.	% OF TOTAL
TOTAL	4,684	100.0	1,135	24.2	694	14.8	483	10.3	399	8.5	290	6.2	210	4.5	565	12.1	908	19.4
AGRI., ETC.	92	100.0	11	12.0	10	10.9	8	8.7	1	1.1	5	5.4	6	6.5	7	7.6	44	47.8
MINING	38	100.0	8	21.1	7	18.4	6	15.8	3	7.9	3	7.9	1	2.6	2	5.3	8	21.1
UTILITIES	5	100.0	0	0.0	0	0.0	0	0.0	1	20.0	0	0.0	1	20.0	0	0.0	3	60.0
CONSTR.	656	100.0	164	25.0	97	14.8	76	11.6	65	9.9	46	7.0	23	3.5	68	10.4	117	17.8
MFG.	153	100.0	30	19.6	15	9.8	14	9.2	8	5.2	12	7.8	5	3.3	33	21.6	36	23.5
WH. TRADE	260	100.0	57	21.9	36	13.8	28	10.8	35	13.5	8	3.1	15	5.8	31	11.9	50	19.2
RE. TRADE	650	100.0	141	21.7	103	15.8	75	11.5	50	7.7	39	6.0	22	3.4	86	13.2	134	20.6
TRN. WHS.	274	100.0	73	26.6	38	13.9	21	7.7	23	8.4	15	5.5	17	6.2	39	14.2	48	17.5
INFO.	42	100.0	10	23.8	7	16.7	7	16.7	3	7.1	1	2.4	3	7.1	5	11.9	6	14.3
FIN., INS.	198	100.0	47	23.7	23	11.6	13	6.6	17	8.6	18	9.1	6	3.0	20	10.1	54	27.3
REAL ESTATE	157	100.0	29	18.5	19	12.1	20	12.7	12	7.6	12	7.6	10	6.4	24	15.3	31	19.7
PRO. & TECH.	468	100.0	116	24.8	74	15.8	42	9.0	40	8.5	34	7.3	19	4.1	52	11.1	91	19.4
CO. MGMT.	17	100.0	5	29.4	3	17.6	2	11.8	2	11.8	2	11.8	1	5.9	1	5.9	1	5.9
ADM. WAST.	354	100.0	123	34.7	68	19.2	31	8.8	29	8.2	17	4.8	14	4.0	35	9.9	37	10.5
EDU. SVCS.	55	100.0	11	20.0	9	16.4	5	9.1	5	9.1	3	5.5	7	12.7	11	20.0	4	7.3
HLTH. CARE	319	100.0	59	18.5	37	11.6	30	9.4	26	8.2	23	7.2	14	4.4	46	14.4	84	26.3
ARTS, ENT.	44	100.0	13	29.5	5	11.4	4	9.1	6	13.6	2	4.5	3	6.8	5	11.4	6	13.6
ACCOMMOD.	403	100.0	126	31.3	74	18.4	45	11.2	36	8.9	25	6.2	16	4.0	35	8.7	46	11.4
OTHER SERV.	499	100.0	112	22.4	69	13.8	56	11.2	37	7.4	25	5.0	27	5.4	65	13.0	108	21.6
PUB. ADMIN.	0	100.0	0	0.0	0	0.0	0	0.0	0	0.0	0	0.0	0	0.0	0	0.0	0	0.0
NONCLASS.	0	100.0	0	0.0	0	0.0	0	0.0	0	0.0	0	0.0	0	0.0	0	0.0	0	0.0

**TABLE 8
BUSINESS DEATHS BY LENGTH OF LIFE AND BY TYPE OF ORGANIZATION
2011**

TYPE OF ORGANIZATION	DEATHS		LENGTH OF LIFE															
			< 1 YEAR		1 YEAR, < 2 YEARS		2 YEARS, < 3 YEARS		3 YEARS, < 4 YEARS		4 YEARS, < 5 YEARS		5 YEARS, < 6 YEARS		6 YEARS, < 10 YEARS		10 YEARS & OVER	
	NO.	% OF TOTAL	NO.	% OF TOTAL	NO.	% OF TOTAL	NO.	% OF TOTAL	NO.	% OF TOTAL	NO.	% OF TOTAL	NO.	% OF TOTAL	NO.	% OF TOTAL	NO.	% OF TOTAL
TOTAL	4,684	100.0	1,135	24.2	694	14.8	483	10.3	399	8.5	290	6.2	210	4.5	565	12.1	908	19.4
CORPORATION	2,636	100.0	639	24.2	377	14.3	259	9.8	234	8.9	161	6.1	121	4.6	347	13.2	498	18.9
IND. OWNER	1,483	100.0	375	25.3	225	15.2	153	10.3	113	7.6	92	6.2	55	3.7	159	10.7	311	21.0
PARTNERSHIP	501	100.0	104	20.8	83	16.6	68	13.6	48	9.6	35	7.0	32	6.4	55	11.0	76	15.2
OTHER	64	100.0	17	26.6	9	14.1	3	4.7	4	6.3	2	3.1	2	3.1	4	6.3	23	35.9

TOTAL BUSINESS DEATHS BY TYPE OF ORGANIZATION 2011

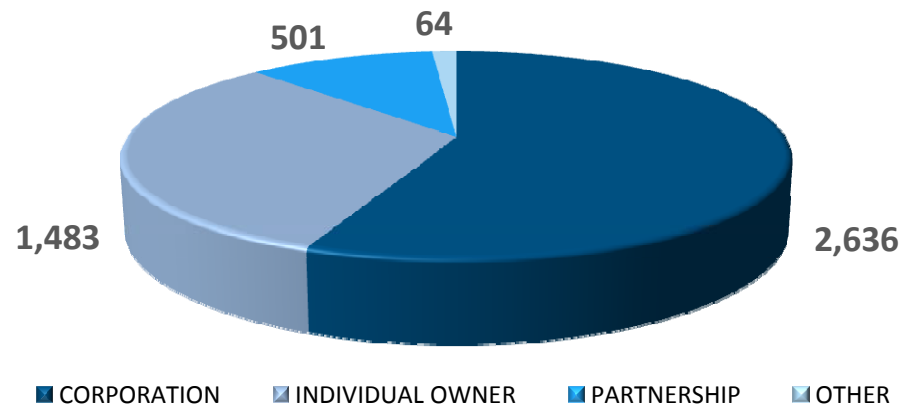
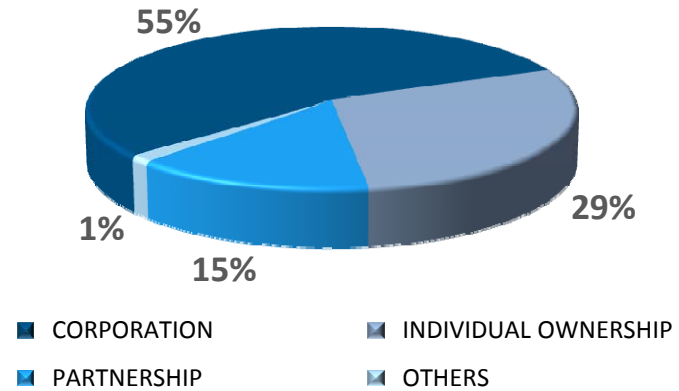


TABLE 9
ACTIVE ESTABLISHMENTS DURING THE FOURTH QUARTER 2010
AND CHANGES IN OWNERSHIP BY NAICS SECTOR
2011

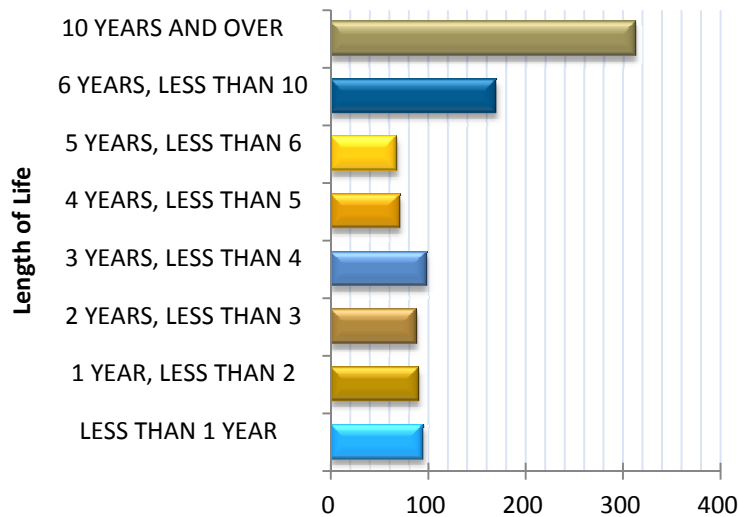
NAICS SECTOR	ACTIVE ESTAB. DURING 4TH QTR 2010		CHANGES IN OWNERSHIP 2011		
	NO.	% OF TOTAL	NO.	% OF TOTAL	RATIO % TO NO. ESTAB. 4TH QTR. 2010
TOTAL	67,849	100.0	990	100.0	1.5
AGRICULTURE, FORESTRY, FISHING & HUNTING	1,737	2.6	10	1.0	0.6
MINING, QUARRYING & OIL & GAS EXTRACTION	498	0.7	8	0.8	1.6
UTILITIES	573	0.8	2	0.2	0.3
CONSTRUCTION	5,983	8.8	49	4.9	0.8
MANUFACTURING	2,569	3.8	28	2.8	1.1
WHOLESALE TRADE	4,611	6.8	84	8.5	1.8
RETAIL TRADE	11,296	16.6	217	21.9	1.9
TRANSPORTATION & WAREHOUSING	2,471	3.6	30	3.0	1.2
INFORMATION	1,164	1.7	5	0.5	0.4
FINANCE & INSURANCE	4,629	6.8	57	5.8	1.2
REAL ESTATE & RENTAL & LEASING	2,725	4.0	41	4.1	1.5
PROFESSIONAL SCIENTIFIC & TECHNICAL SERVICES	5,970	8.8	79	8.0	1.3
MANAGEMENT OF COMPANIES & ENTERPRISES	480	0.7	5	0.5	1.0
ADMIN. & WASTE MGT. & REMEDIATION SERVICES	3,440	5.1	44	4.4	1.3
EDUCATIONAL SERVICES	1,251	1.8	6	0.6	0.5
HEALTH CARE & SOCIAL ASSISTANCE	6,694	9.9	70	7.1	1.0
ARTS, ENTERTAINMENT & RECREATION	722	1.1	16	1.6	2.2
ACCOMMODATION & FOOD SERVICES	5,022	7.4	156	15.8	3.1
OTHER SERVICES	5,025	7.4	81	8.2	1.6
PUBLIC ADMINISTRATION	989	1.5	0	0.0	0.0
NONCLASSIFIABLE	0	0.0	2	0.2	0.0

**TABLE 10
CHANGES IN OWNERSHIP
BY TYPE OF ORGANIZATION 2011**

TYPE OF ORGANIZATION	CHANGES IN OWNERSHIP	
	NUMBER	PERCENT OF TOTAL
TOTAL	990	100.0
CORPORATION	543	54.9
INDIVIDUAL OWNERSHIP	287	29.0
PARTNERSHIP	146	14.7
OTHERS	14	1.4



**TABLE 11
CHANGES IN OWNERSHIP
BY LENGTH OF LIFE 2011**



LENGTH OF LIFE	CHANGES IN OWNERSHIP	
	NUMBER	PERCENT OF TOTAL
TOTAL	990	100.0
LESS THAN 1 YEAR	95	9.6
1 YEAR, LESS THAN 2	90	9.1
2 YEARS, LESS THAN 3	87	8.8
3 YEARS, LESS THAN 4	98	9.9
4 YEARS, LESS THAN 5	71	7.2
5 YEARS, LESS THAN 6	67	6.8
6 YEARS, LESS THAN 10	170	17.2
10 YEARS AND OVER	312	31.5

TABLE 12
TYPES OF BUSINESS ORGANIZATIONS
ACTIVE 4TH QUARTER 2010

NAICS SECTOR	CORPORATIONS	INDIVIDUAL OWNERSHIPS	PARTNERSHIPS	OTHER
TOTAL	46,643	11,297	6,419	3,490
AGRICULTURE, FORESTRY, FISHING & HUNTING	882	284	555	16
MINING, QUARRYING & OIL & GAS EXTRACTION	407	41	46	4
UTILITIES	460	5	9	99
CONSTRUCTION	4,257	1,208	467	51
MANUFACTURING	2,063	257	228	21
WHOLESALE TRADE	4,041	191	345	34
RETAIL TRADE	8,178	2,082	979	57
TRANSPORTATION & WAREHOUSING	1,832	384	205	50
INFORMATION	837	47	68	212
FINANCE & INSURANCE	3,636	545	330	118
REAL ESTATE & RENTAL & LEASING	1,713	351	546	115
PROFESSIONAL, SCIENTIFIC & TECHNICAL SERVICES	4,125	1,118	630	97
MGMT. OF COMPANIES & ENTERPRISES	429	6	40	5
ADMIN. & WASTE MGT. & REMEDIATION SERVICES	2,529	525	317	69
EDUCATIONAL SERVICES	487	56	23	685
HEALTH CARE & SOCIAL ASSISTANCE	4,230	1,218	544	702
ARTS, ENTERTAINMENT & RECREATION	512	82	91	37
ACCOMMODATION & FOOD SERVICES	3,341	904	722	55
OTHER SERVICES	2,614	1,993	274	144
PUBLIC ADMINISTRATION	70	0	0	919
NONCLASSIFIABLE	0	0	0	0

**TABLE 13
BUSINESS BIRTHS AND DEATHS BY COUNTY AND BY INDUSTRY 2011**

COUNTY	TOTAL		INDUSTRY											
			CONSTRUCTION		MANUFACTURING		TRADE		FINANCE, ETC.		SERVICES		OTHER	
	BIRTHS	DEATHS	BIRTH	DEATH	BIRTH	DEATH	BIRTH	DEATH	BIRTH	DEATH	BIRTH	DEATH	BIRTH	DEATH
TOTAL	5,365	4,684	624	656	128	153	952	910	380	353	2,666	2,133	615	479
ADAMS	41	68	1	3	2	2	6	8	6	4	24	44	2	7
ALCORN	32	52	5	3	1	10	3	12	5	4	16	15	2	8
AMITE	9	10	1	2	0	1	2	0	0	0	4	4	2	3
ATTALA	17	23	1	1	2	2	4	9	1	0	7	9	2	2
BENTON	7	3	2	0	0	0	1	1	0	0	3	1	1	1
BOLIVAR	44	34	0	5	1	1	7	6	5	2	23	17	8	3
CALHOUN	15	15	0	1	0	0	3	4	1	0	3	9	8	1
CARROLL	3	9	0	4	0	0	1	1	0	0	2	3	0	1
CHICKASAW	22	18	1	1	4	1	7	3	2	2	6	9	2	2
CHOCTAW	11	8	1	2	0	2	3	0	0	0	5	3	2	1
CLAIBORNE	10	9	1	2	0	0	1	1	1	0	6	6	1	0
CLARKE	19	16	1	4	2	0	4	0	0	1	5	4	7	7
CLAY	21	24	2	2	1	0	3	5	1	2	10	13	4	2
COAHOMA	29	28	1	0	0	0	6	3	2	1	13	21	7	3
COPIAH	17	18	2	3	1	2	4	2	1	1	5	5	4	5
COVINGTON	20	18	3	3	0	0	3	6	0	2	9	7	5	0
DESOTO	207	194	22	33	8	9	47	33	10	17	97	73	23	29
FORREST	135	151	7	18	1	5	25	36	11	13	75	71	16	8
FRANKLIN	8	7	0	0	1	0	1	2	0	0	4	4	2	1
GEORGE	30	28	2	3	2	0	4	8	2	1	17	13	3	3
GREENE	6	3	1	1	0	0	1	0	0	0	3	2	1	0
GRENADA	13	23	0	3	0	1	2	5	1	0	7	12	3	2
HANCOCK	67	67	14	19	4	3	14	12	3	5	30	21	2	7
HARRISON	316	298	42	56	3	4	51	46	31	34	165	143	24	15
HINDS	374	425	22	44	8	10	50	64	28	38	236	246	30	23
HOLMES	10	14	0	0	0	0	4	5	0	0	2	7	4	2
HUMPHREYS	10	10	1	1	0	0	2	0	0	0	4	6	3	3
ISSAQUENA	1	0	0	0	0	0	1	0	0	0	0	0	0	0

**TABLE 13
BUSINESS BIRTHS AND DEATHS BY COUNTY AND BY INDUSTRY 2011**

COUNTY	TOTAL		INDUSTRY											
			CONSTRUCTION		MANUFACTURING		TRADE		FINANCE, ETC.		SERVICES		OTHER	
	BIRTHS	DEATHS	BIRTH	DEATH	BIRTH	DEATH	BIRTH	DEATH	BIRTH	DEATH	BIRTH	DEATH	BIRTH	DEATH
ITAWAMBA	27	20	3	1	2	0	7	8	0	0	8	7	7	4
JACKSON	162	180	15	43	9	3	33	34	15	15	81	80	9	5
JASPER	10	10	0	0	0	0	0	3	0	1	7	2	3	4
JEFFERSON	4	4	0	0	0	0	2	2	0	0	2	2	0	0
JEFFERSON DAVIS	10	14	0	0	1	1	1	2	1	0	6	8	1	3
JONES	66	80	4	10	2	1	9	15	9	9	28	37	14	8
KEMPER	8	10	1	3	0	0	2	1	0	0	5	4	0	2
LAFAYETTE	81	96	6	7	0	1	15	23	4	6	50	50	6	9
LAMAR	74	96	10	19	1	0	12	18	7	8	32	38	12	13
LAUDERDALE	115	105	9	12	0	6	32	23	11	7	54	50	9	7
LAWRENCE	13	11	1	1	0	1	2	3	0	2	4	2	6	2
LEAKE	12	18	2	3	1	0	1	4	1	1	6	7	1	3
LEE	121	155	8	17	11	12	17	39	7	13	66	59	12	15
LEFLORE	35	37	4	2	1	1	5	7	4	3	19	20	2	4
LINCOLN	46	43	3	1	5	3	5	13	2	2	19	17	12	7
LOWNDES	84	73	8	13	2	3	15	19	5	4	40	30	14	4
MADISON	217	192	13	31	5	7	33	28	20	19	137	93	9	14
MARION	31	53	2	6	1	3	5	13	3	4	13	18	7	9
MARSHALL	31	27	4	7	0	3	8	6	0	1	16	7	3	3
MONROE	40	48	6	7	2	2	5	8	2	2	16	19	9	10
MONTGOMERY	13	15	0	0	0	1	1	1	1	0	6	10	5	3
NESHOBA	21	34	1	4	0	1	5	8	3	3	7	13	5	5
NEWTON	15	17	1	3	1	0	3	7	0	0	5	7	5	0
NOXUBEE	14	9	3	3	0	1	2	0	1	0	3	2	5	3
OKTIBBEHA	71	40	10	10	0	1	6	6	7	2	41	20	7	1
PANOLA	36	39	5	4	5	0	6	5	1	6	15	19	4	5
PEARL RIVER	56	61	12	13	1	3	7	12	6	4	27	24	3	5
PERRY	14	9	3	3	0	0	2	2	0	0	4	1	5	3
PIKE	49	63	2	8	0	1	12	16	1	5	20	20	14	13
PONTOTOC	28	30	2	5	2	7	10	6	4	2	8	6	2	4

**TABLE 13
BUSINESS BIRTHS AND DEATHS BY COUNTY AND BY INDUSTRY 2011**

COUNTY	TOTAL		INDUSTRY											
			CONSTRUCTION		MANUFACTURING		TRADE		FINANCE, ETC.		SERVICES		OTHER	
	BIRTHS	DEATHS	BIRTH	DEATH	BIRTH	DEATH	BIRTH	DEATH	BIRTH	DEATH	BIRTH	DEATH	BIRTH	DEATH
PRENTISS	26	29	3	3	1	0	9	8	1	4	11	6	1	8
QUITMAN	3	3	0	0	0	0	1	2	0	0	1	0	1	1
RANKIN	236	192	37	28	5	6	34	30	23	16	119	100	18	12
SCOTT	20	26	1	1	0	0	4	7	1	3	10	11	4	4
SHARKEY	7	5	1	0	0	0	1	0	1	0	3	3	1	2
SIMPSON	18	30	2	4	0	1	6	7	1	2	5	16	4	0
SMITH	18	14	2	2	1	0	5	3	1	1	4	3	5	5
STONE	19	18	1	1	0	0	6	4	0	0	7	9	5	4
SUNFLOWER	30	19	2	2	0	0	6	3	0	0	14	9	8	5
TALLAHATCHIE	11	8	0	1	0	0	1	0	0	0	7	5	3	2
TATE	20	24	3	1	1	0	7	7	1	2	7	10	1	4
TIPPAH	13	20	0	1	0	3	3	4	0	0	7	9	3	3
TISHOMINGO	24	15	1	2	1	3	6	3	0	2	9	4	7	1
TUNICA	13	14	1	0	0	0	4	5	1	1	3	6	4	2
UNION	40	34	6	0	4	1	8	9	1	1	15	16	6	7
WALTHALL	16	18	2	2	0	1	2	2	5	0	5	11	2	2
WARREN	64	92	11	4	2	3	15	22	1	7	31	46	4	10
WASHINGTON	60	58	7	5	1	2	15	17	0	3	27	26	10	5
WAYNE	20	24	1	3	0	2	3	7	3	2	8	5	5	5
WEBSTER	14	13	4	2	1	1	0	5	0	1	7	3	2	1
WILKINSON	11	8	2	1	1	0	2	2	1	1	5	3	0	1
WINSTON	18	17	2	0	0	1	1	2	2	0	12	9	1	5
YALOBUSHA	13	9	0	1	0	1	5	2	0	0	5	5	3	0
YAZOO	25	25	3	4	0	1	4	5	4	1	9	8	5	6
UNCLASSIFIED	1,628	807	261	138	17	12	281	150	107	60	809	370	153	77

TABLE 14
BUSINESS DEATHS BY COUNTY AND BY LENGTH OF LIFE 2011

COUNTY	TOTAL DEATHS	LENGTH OF LIFE							
		< 1 YEAR	1 YEAR, < 2 YEARS	2 YEARS, < 3 YEARS	3 YEARS, < 4 YEARS	4 YEARS, < 5 YEARS	5 YEARS, < 6 YEARS	6 YEARS, < 10 YEARS	10 YEARS & OVER
TOTAL	4,684	1,135	694	483	399	290	210	565	908
ADAMS	68	16	4	5	3	6	3	12	19
ALCORN	52	10	4	6	2	3	2	9	16
AMITE	10	2	0	1	0	0	0	3	4
ATTALA	23	3	2	1	2	1	0	6	8
BENTON	3	1	0	1	0	0	0	1	0
BOLIVAR	34	9	9	2	2	1	1	5	5
CALHOUN	15	3	0	2	3	1	1	0	5
CARROLL	9	4	1	1	0	0	0	2	1
CHICKASAW	18	2	2	4	2	1	0	2	5
CHOCTAW	8	2	1	0	0	1	1	1	2
CLAIBORNE	9	1	1	1	1	2	0	1	2
CLARKE	16	5	1	2	0	0	2	1	5
CLAY	24	5	4	0	2	1	2	3	7
COAHOMA	28	9	2	2	1	4	0	2	8
COPIAH	18	3	3	1	1	0	1	2	7
COVINGTON	18	3	4	1	2	1	0	1	6
DESOTO	194	35	32	26	20	12	16	25	28
FORREST	151	24	15	18	15	8	9	21	41
FRANKLIN	7	1	1	0	0	0	2	0	3
GEORGE	28	10	4	4	2	0	0	3	5
GREENE	3	0	1	0	0	1	0	1	0
GRENADA	23	5	1	1	1	4	1	4	6
HANCOCK	67	22	12	5	13	6	1	2	6
HARRISON	298	69	51	28	26	23	12	31	58
HINDS	425	92	56	41	24	28	13	54	117
HOLMES	14	3	2	1	1	1	0	1	5
HUMPHREYS	10	0	2	2	2	1	0	1	2
ISSAQUENA	0	0	0	0	0	0	0	0	0

TABLE 14
BUSINESS DEATHS BY COUNTY AND BY LENGTH OF LIFE 2011

COUNTY	TOTAL DEATHS	LENGTH OF LIFE							
		< 1 YEAR	1 YEAR, < 2 YEARS	2 YEARS, < 3 YEARS	3 YEARS, < 4 YEARS	4 YEARS, < 5 YEARS	5 YEARS, < 6 YEARS	6 YEARS, < 10 YEARS	10 YEARS & OVER
ITAWAMBA	20	6	1	2	0	0	2	1	8
JACKSON	180	44	38	25	13	17	6	12	25
JASPER	10	3	2	0	0	0	1	1	3
JEFFERSON	4	1	0	2	0	1	0	0	0
JEFFERSON DAVIS	14	6	0	0	1	2	0	2	3
JONES	80	21	7	9	9	3	4	8	19
KEMPER	10	1	1	1	1	0	0	1	5
LAFAYETTE	96	22	19	14	10	4	3	7	17
LAMAR	96	20	13	11	7	12	2	12	19
LAUDERDALE	105	23	10	8	9	5	4	24	22
LAWRENCE	11	4	2	0	0	0	1	0	4
LEAKE	18	2	2	4	3	1	0	1	5
LEE	155	29	22	10	11	7	10	23	43
LEFLORE	37	3	3	3	2	4	3	6	13
LINCOLN	43	8	6	3	1	3	2	10	10
LOWNDES	73	16	10	6	9	5	2	11	14
MADISON	192	41	27	23	18	19	9	29	26
MARION	53	7	10	12	4	5	1	1	13
MARSHALL	27	8	5	2	3	1	3	2	3
MONROE	48	11	11	5	4	4	1	3	9
MONTGOMERY	15	7	1	2	0	0	2	1	2
NESHOBA	34	6	7	3	1	1	3	6	7
NEWTON	17	7	3	0	2	1	0	2	2
NOXUBEE	9	3	1	2	1	1	0	0	1
OKTIBBEHA	40	13	4	5	5	1	2	3	7
PANOLA	39	6	8	1	7	1	1	6	9
PEARL RIVER	61	11	4	9	7	2	3	8	17
PERRY	9	2	2	1	0	1	0	2	1
PIKE	63	16	6	5	5	4	0	10	17
PONTOTOC	30	5	8	3	1	1	1	5	6

TABLE 14
BUSINESS DEATHS BY COUNTY AND BY LENGTH OF LIFE 2011

COUNTY	TOTAL DEATHS	LENGTH OF LIFE							
		< 1 YEAR	1 YEAR, < 2 YEARS	2 YEARS, < 3 YEARS	3 YEARS, < 4 YEARS	4 YEARS, < 5 YEARS	5 YEARS, < 6 YEARS	6 YEARS, < 10 YEARS	10 YEARS & OVER
PRENTISS	29	4	3	4	2	2	3	4	7
QUITMAN	3	0	1	1	0	0	0	0	1
RANKIN	192	40	36	19	14	15	6	34	28
SCOTT	26	6	1	5	3	1	1	1	8
SHARKEY	5	0	0	0	1	1	1	1	1
SIMPSON	30	3	6	3	2	1	3	3	9
SMITH	14	4	2	2	2	0	0	0	4
STONE	18	4	7	1	2	0	1	0	3
SUNFLOWER	19	1	2	2	1	0	2	2	9
TALLAHATCHIE	8	2	0	0	0	0	0	1	5
TATE	24	5	5	2	2	1	3	2	4
TIPPAH	20	5	3	2	2	0	1	2	5
TISHOMINGO	15	6	4	0	0	1	0	0	4
TUNICA	14	2	1	1	3	0	0	3	4
UNION	34	8	8	2	2	3	1	7	3
WALTHALL	18	5	1	0	2	1	2	3	4
WARREN	92	9	13	9	5	4	11	15	26
WASHINGTON	58	14	4	2	5	2	5	8	18
WAYNE	24	3	2	0	2	4	2	4	7
WEBSTER	13	4	1	1	1	0	0	2	4
WILKINSON	8	1	1	1	1	0	0	3	1
WINSTON	17	4	2	0	2	0	1	4	4
YALOBUSHA	9	5	1	1	1	0	0	1	0
YAZOO	25	3	5	5	2	0	0	4	6
UNCLASSIFIED	807	306	137	93	83	42	34	70	42

TABLE 15
CHANGES IN OWNERSHIP BY COUNTY AND BY INDUSTRY 2011

COUNTY	TOTAL		INDUSTRY					
	NUMBER	PERCENT	CONSTRUC.	MANUFACT.	TRADE	FINANCE ETC.	SERVICE	OTHER
TOTAL	990	100.0	28	49	301	98	457	57
ADAMS	11	1.1	1	1	4	2	3	0
ALCORN	16	1.6	1	2	6	0	7	0
AMITE	5	0.5	1	0	4	0	0	0
ATTALA	5	0.5	0	1	1	0	2	1
BENTON	1	0.1	1	0	0	0	0	0
BOLIVAR	12	1.2	1	1	2	1	6	1
CALHOUN	5	0.5	0	0	1	0	2	2
CARROLL	1	0.1	0	0	0	0	1	0
CHICKASAW	4	0.4	2	1	1	0	0	0
CHOCTAW	1	0.1	0	0	0	0	0	1
CLAIBORNE	1	0.1	0	0	1	0	0	0
CLARKE	3	0.3	0	0	1	0	2	0
CLAY	9	0.9	0	0	4	0	3	2
COAHOMA	8	0.8	0	0	1	1	5	1
COPIAH	5	0.5	0	0	1	0	4	0
COVINGTON	2	0.2	0	0	0	1	1	0
DESOTO	37	3.7	0	3	14	4	15	1
FORREST	32	3.2	1	1	5	7	18	0
FRANKLIN	7	0.7	0	0	2	1	4	0
GEORGE	5	0.5	1	0	2	0	2	0
GREENE	0	0.0	0	0	0	0	0	0
GRENADA	7	0.7	0	0	1	0	5	1
HANCOCK	14	1.4	0	0	3	4	6	1
HARRISON	57	5.8	1	5	12	7	31	1
HINDS	105	10.6	2	3	27	12	57	4
HOLMES	2	0.2	0	0	1	0	0	1
HUMPHREYS	5	0.5	0	0	1	0	3	1
ISSAQUENA	0	0.0	0	0	0	0	0	0

TABLE 15
CHANGES IN OWNERSHIP BY COUNTY AND BY INDUSTRY 2011

COUNTY	TOTAL		INDUSTRY					
	NUMBER	PERCENT	CONSTRUC.	MANUFACT.	TRADE	FINANCE ETC.	SERVICE	OTHER
ITAWAMBA	3	0.3	2	1	0	0	0	0
JACKSON	34	3.4	2	0	5	4	23	0
JASPER	3	0.3	0	0	1	0	2	0
JEFFERSON	0	0.0	0	0	0	0	0	0
JEFFERSON DAVIS	4	0.4	0	0	3	0	1	0
JONES	20	2.0	2	0	4	3	8	3
KEMPER	2	0.2	0	0	0	0	1	1
LAFAYETTE	16	1.6	0	0	5	2	8	1
LAMAR	9	0.9	0	0	3	0	4	2
LAUDERDALE	23	2.3	1	2	10	2	8	0
LAWRENCE	2	0.2	0	0	2	0	0	0
LEAKE	7	0.7	0	0	5	0	2	0
LEE	25	2.5	1	0	6	4	11	3
LEFLORE	9	0.9	0	0	3	0	6	0
LINCOLN	13	1.3	0	1	5	1	6	0
LOWNDES	23	2.3	0	1	7	1	12	2
MADISON	35	3.5	0	3	10	6	16	0
MARION	7	0.7	0	0	2	0	4	1
MARSHALL	9	0.9	0	0	4	1	4	0
MONROE	6	0.6	0	1	1	1	3	0
MONTGOMERY	3	0.3	0	0	2	1	0	0
NESHOBA	11	1.1	0	0	4	1	4	2
NEWTON	5	0.5	0	1	1	0	3	0
NOXUBEE	9	0.9	0	1	1	0	5	2
OKTIBBEHA	8	0.8	0	0	1	0	6	1
PANOLA	7	0.7	0	1	2	1	3	0
PEARL RIVER	11	1.1	0	0	5	0	6	0
PERRY	4	0.4	0	0	3	1	0	0
PIKE	17	1.7	0	0	6	0	9	2
PONTOTOC	5	0.5	0	0	4	0	1	0

TABLE 15
CHANGES IN OWNERSHIP BY COUNTY AND BY INDUSTRY 2011

COUNTY	TOTAL		INDUSTRY					
	NUMBER	PERCENT	CONSTRUC.	MANUFACT.	TRADE	FINANCE ETC.	SERVICE	OTHER
PRENTISS	3	0.3	0	1	1	0	1	0
QUITMAN	3	0.3	0	0	1	0	1	1
RANKIN	52	5.3	2	4	16	5	23	2
SCOTT	11	1.1	0	0	4	1	6	0
SHARKEY	1	0.1	0	0	0	0	1	0
SIMPSON	7	0.7	0	1	2	0	3	1
SMITH	1	0.1	0	0	0	0	1	0
STONE	3	0.3	0	0	1	1	1	0
SUNFLOWER	3	0.3	0	0	2	1	0	0
TALLAHATCHIE	3	0.3	0	0	1	0	2	0
TATE	2	0.2	0	0	2	0	0	0
TIPPAH	3	0.3	0	0	2	0	0	1
TISHOMINGO	6	0.6	0	0	3	0	3	0
TUNICA	4	0.4	0	0	2	1	0	1
UNION	9	0.9	0	1	2	0	5	1
WALTHALL	5	0.5	0	1	0	1	3	0
WARREN	19	1.9	1	0	5	2	11	0
WASHINGTON	14	1.4	1	0	0	2	9	2
WAYNE	8	0.8	0	0	3	0	5	0
WEBSTER	3	0.3	0	0	3	0	0	0
WILKINSON	3	0.3	0	0	0	0	2	1
WINSTON	5	0.5	0	0	3	1	1	0
YALOBUSHA	3	0.3	0	0	1	0	1	1
YAZOO	7	0.7	2	0	2	0	3	0
UNCLASSIFIED	122	12.3	2	11	45	14	42	8

TABLE 16
BUSINESS BIRTHS BY COUNTY AND BY MONTH 2011

COUNTY	TOTAL BIRTHS	BIRTHS PER MONTH											
		JAN.	FEB.	MAR.	APR.	MAY	JUNE	JULY	AUG.	SEPT.	OCT.	NOV.	DEC.
TOTAL	5,365	493	657	402	541	674	279	499	473	233	535	407	172
ADAMS	41	3	6	6	6	3	1	3	4	6	0	3	0
ALCORN	32	3	3	4	4	2	3	3	4	0	2	1	3
AMITE	9	2	0	2	0	0	0	2	1	0	0	1	1
ATTALA	17	2	2	1	2	4	0	0	0	0	4	1	1
BENTON	7	1	0	1	0	0	0	1	1	0	2	1	0
BOLIVAR	44	4	10	4	1	5	0	6	6	1	3	1	3
CALHOUN	15	1	3	2	0	2	0	1	1	1	3	1	0
CARROLL	3	0	0	0	0	0	0	0	0	0	1	2	0
CHICKASAW	22	1	1	1	2	0	3	7	0	3	4	0	0
CHOCTAW	11	0	2	2	0	1	2	1	0	0	1	2	0
CLAIBORNE	10	2	1	0	0	2	3	0	1	0	0	1	0
CLARKE	19	1	2	3	2	1	1	3	1	0	4	1	0
CLAY	21	2	7	1	2	0	2	3	0	0	1	0	3
COAHOMA	29	4	1	0	2	5	2	5	2	0	1	5	2
COPIAH	17	1	2	3	0	3	0	1	1	0	5	1	0
COVINGTON	20	1	0	2	1	3	0	3	3	1	3	2	1
DESOTO	207	18	26	16	26	20	18	20	17	9	18	13	6
FORREST	135	11	18	7	10	14	7	15	15	9	14	6	9
FRANKLIN	8	0	1	1	0	0	0	3	2	0	0	1	0
GEORGE	30	1	1	1	3	5	2	1	10	1	2	3	0
GREENE	6	0	1	0	0	1	0	0	1	1	1	1	0
GRENADA	13	1	1	1	2	1	2	0	2	1	1	0	1
HANCOCK	67	6	6	7	10	9	2	6	10	4	3	1	3
HARRISON	316	36	29	32	23	31	19	33	24	14	38	27	10
HINDS	374	22	52	33	47	47	13	40	30	11	41	24	14
HOLMES	10	1	1	1	2	0	1	0	3	0	0	0	1
HUMPHREYS	10	2	1	1	3	2	1	0	0	0	0	0	0
ISSAQUENA	1	0	0	0	0	0	0	0	0	0	1	0	0

TABLE 16
BUSINESS BIRTHS BY COUNTY AND BY MONTH 2011

COUNTY	TOTAL BIRTHS	BIRTHS PER MONTH											
		JAN.	FEB.	MAR.	APR.	MAY	JUNE	JULY	AUG.	SEPT.	OCT.	NOV.	DEC.
ITAWAMBA	27	3	1	3	4	5	1	3	2	1	2	1	1
JACKSON	162	20	16	11	22	21	6	12	12	9	14	9	10
JASPER	10	2	1	2	1	3	0	0	0	0	1	0	0
JEFFERSON	4	0	1	1	1	0	0	0	0	1	0	0	0
JEFFERSON DAVIS	10	0	1	2	0	3	0	2	0	0	1	1	0
JONES	66	11	10	5	10	6	3	4	2	3	9	2	1
KEMPER	8	0	0	1	1	1	2	2	0	0	0	1	0
LAFAYETTE	81	3	14	4	8	10	4	16	8	3	4	5	2
LAMAR	74	11	4	6	13	7	4	5	5	3	7	8	1
LAUDERDALE	115	20	11	7	18	7	4	12	7	2	17	10	0
LAWRENCE	13	2	2	1	1	1	0	1	0	1	2	1	1
LEAKE	12	1	1	2	1	3	1	2	1	0	0	0	0
LEE	121	8	17	6	19	10	7	9	12	5	15	11	2
LEFLORE	35	6	3	6	3	3	2	1	3	2	4	1	1
LINCOLN	46	2	8	1	2	5	0	7	6	4	5	4	2
LOWNDES	84	16	10	2	6	10	5	9	7	2	9	4	4
MADISON	217	22	29	15	19	32	11	27	17	9	20	10	6
MARION	31	2	5	3	6	4	1	3	3	1	0	2	1
MARSHALL	31	3	2	4	5	4	2	3	2	0	2	4	0
MONROE	40	1	6	4	7	5	0	5	4	1	3	0	4
MONTGOMERY	13	1	1	0	2	2	1	3	1	0	1	1	0
NESHOBA	21	6	1	0	3	2	2	2	3	0	1	1	0
NEWTON	15	0	1	0	6	2	0	0	1	0	4	0	1
NOXUBEE	14	4	1	1	1	2	0	1	2	0	0	1	1
OKTIBBEHA	71	9	4	3	7	8	7	6	3	5	12	4	3
PANOLA	36	4	3	1	4	6	1	5	4	0	3	3	2
PEARL RIVER	56	6	4	7	9	4	1	9	6	3	2	5	0
PERRY	14	1	2	0	1	2	1	2	2	1	1	0	1
PIKE	49	5	8	7	6	1	2	7	2	2	6	3	0
PONTOTOC	28	5	5	1	4	2	1	2	3	0	0	4	1

TABLE 16
BUSINESS BIRTHS BY COUNTY AND BY MONTH 2011

COUNTY	TOTAL BIRTHS	BIRTHS PER MONTH											
		JAN.	FEB.	MAR.	APR.	MAY	JUNE	JULY	AUG.	SEPT.	OCT.	NOV.	DEC.
PRENTISS	26	1	6	0	6	2	1	3	0	0	4	2	1
QUITMAN	3	0	1	0	0	0	0	0	1	0	0	0	1
RANKIN	236	25	29	18	23	25	18	28	14	7	29	13	7
SCOTT	20	4	4	1	3	2	0	4	0	0	0	1	1
SHARKEY	7	1	1	1	0	1	0	0	2	0	0	1	0
SIMPSON	18	0	2	0	2	5	1	2	2	2	2	0	0
SMITH	18	1	1	0	1	1	0	6	2	1	5	0	0
STONE	19	1	1	2	0	3	2	2	1	3	4	0	0
SUNFLOWER	30	1	5	0	4	6	1	4	3	2	2	1	1
TALLAHATCHIE	11	1	2	2	1	0	0	2	1	0	1	1	0
TATE	20	2	3	2	2	2	2	0	1	0	2	2	2
TIPPAH	13	2	1	2	3	2	0	2	0	0	1	0	0
TISHOMINGO	24	3	3	3	10	0	0	1	0	0	2	1	1
TUNICA	13	0	1	0	3	0	3	2	0	0	4	0	0
UNION	40	8	5	3	4	5	2	2	3	3	3	1	1
WALTHALL	16	2	6	0	3	1	1	0	0	1	0	1	1
WARREN	64	10	8	4	4	9	3	7	6	2	6	4	1
WASHINGTON	60	8	10	1	8	7	6	5	3	1	5	5	1
WAYNE	20	1	5	0	3	2	2	1	3	0	2	0	1
WEBSTER	14	2	1	1	2	2	3	0	2	0	1	0	0
WILKINSON	11	2	2	0	1	0	0	2	1	1	0	0	2
WINSTON	18	3	0	2	2	1	0	3	1	1	4	0	1
YALOBUSHA	13	0	3	1	1	2	0	1	0	0	4	1	0
YAZOO	25	2	5	0	2	5	1	3	1	2	2	1	1
UNCLASSIFIED	1,628	113	203	121	115	259	82	102	169	87	154	177	46

TABLE 17
BUSINESS DEATHS BY COUNTY AND BY MONTH 2011

COUNTY	TOTAL DEATHS	DEATHS PER MONTH											
		JAN.	FEB.	MAR.	APR.	MAY	JUNE	JULY	AUG.	SEPT.	OCT.	NOV.	DEC.
TOTAL	4,684	392	354	532	377	504	482	362	425	305	437	269	245
ADAMS	68	3	7	8	7	4	9	8	10	1	3	2	6
ALCORN	52	2	5	5	3	6	4	2	11	1	4	6	3
AMITE	10	0	0	1	3	0	1	1	1	1	0	0	2
ATTALA	23	0	1	2	3	1	3	1	5	2	4	0	1
BENTON	3	0	0	0	0	1	0	0	0	1	1	0	0
BOLIVAR	34	2	3	1	2	3	5	2	8	3	2	0	3
CALHOUN	15	1	0	4	0	1	1	0	5	1	1	0	1
CARROLL	9	0	0	1	1	1	1	0	4	0	1	0	0
CHICKASAW	18	0	1	0	2	5	3	1	2	1	1	1	1
CHOCTAW	8	0	1	1	0	1	1	0	2	0	0	1	1
CLAIBORNE	9	0	3	0	1	1	2	0	0	1	0	1	0
CLARKE	16	1	0	0	0	1	6	2	1	0	1	1	3
CLAY	24	3	2	3	2	1	2	1	3	1	2	4	0
COAHOMA	28	0	0	3	2	1	2	1	5	1	3	6	4
COPIAH	18	0	2	1	2	3	1	2	3	0	3	1	0
COVINGTON	18	1	0	3	0	4	1	1	2	2	1	2	1
DESOTO	194	14	14	25	12	21	16	12	19	8	22	9	22
FORREST	151	24	10	14	6	9	12	8	22	18	8	6	14
FRANKLIN	7	0	0	0	2	0	1	1	1	0	1	1	0
GEORGE	28	0	0	3	3	1	8	0	3	5	4	1	0
GREENE	3	0	0	0	0	1	1	1	0	0	0	0	0
GRENADA	23	1	1	1	5	1	5	1	6	0	0	2	0
HANCOCK	67	1	14	7	4	7	1	5	5	8	6	3	6
HARRISON	298	24	24	38	20	33	25	31	16	22	43	11	11
HINDS	425	41	41	49	30	45	51	44	33	18	35	22	16
HOLMES	14	0	2	2	3	1	3	1	0	1	1	0	0
HUMPHREYS	10	2	0	0	0	1	2	1	1	0	2	0	1
ISSAQUENA	0	0	0	0	0	0	0	0	0	0	0	0	0

TABLE 17
BUSINESS DEATHS BY COUNTY AND BY MONTH 2011

COUNTY	TOTAL DEATHS	DEATHS PER MONTH											
		JAN.	FEB.	MAR.	APR.	MAY	JUNE	JULY	AUG.	SEPT.	OCT.	NOV.	DEC.
ITAWAMBA	20	1	0	3	2	0	1	1	4	3	4	0	1
JACKSON	180	20	28	14	18	21	12	22	7	14	19	2	3
JASPER	10	0	0	0	2	1	2	0	2	0	1	0	2
JEFFERSON	4	0	0	1	1	0	0	0	1	0	1	0	0
JEFFERSON DAVIS	14	0	0	0	6	0	2	2	2	1	1	0	0
JONES	80	5	15	7	6	13	5	11	6	5	4	1	2
KEMPER	10	1	0	1	3	1	1	2	0	0	0	1	0
LAFAYETTE	96	5	2	13	8	21	6	10	13	5	5	5	3
LAMAR	96	3	4	11	9	13	10	7	8	12	12	5	2
LAUDERDALE	105	1	6	11	17	12	10	11	8	3	15	4	7
LAWRENCE	11	0	0	0	2	1	3	3	0	0	1	1	0
LEAKE	18	2	1	2	1	2	1	2	0	2	1	3	1
LEE	155	13	16	19	8	18	13	8	18	10	21	6	5
LEFLORE	37	2	2	7	1	3	2	2	5	4	4	2	3
LINCOLN	43	4	1	5	4	4	5	5	4	1	5	1	4
LOWNDES	73	7	2	8	4	5	9	10	9	6	3	6	4
MADISON	192	19	18	26	13	12	25	10	13	15	14	16	11
MARION	53	3	4	8	5	6	7	1	1	6	4	5	3
MARSHALL	27	3	4	7	1	2	0	2	4	1	1	1	1
MONROE	48	6	3	8	3	6	3	3	4	7	3	1	1
MONTGOMERY	15	0	0	4	0	1	3	2	0	3	0	1	1
NESHOBA	34	2	1	3	6	3	0	3	1	1	5	2	7
NEWTON	17	0	1	5	2	1	1	0	1	1	1	3	1
NOXUBEE	9	3	0	1	0	0	2	2	0	1	0	0	0
OKTIBBEHA	40	8	0	4	3	3	8	2	3	3	1	2	3
PANOLA	39	3	1	6	4	7	1	4	5	0	4	2	2
PEARL RIVER	61	8	1	7	6	7	4	2	10	2	4	6	4
PERRY	9	1	0	2	0	0	3	0	1	0	0	2	0
PIKE	63	6	11	8	5	3	7	2	3	7	5	4	2
PONTOTOC	30	1	4	8	2	2	3	3	1	1	2	3	0

TABLE 17
BUSINESS DEATHS BY COUNTY AND BY MONTH 2011

COUNTY	TOTAL DEATHS	DEATHS PER MONTH											
		JAN.	FEB.	MAR.	APR.	MAY	JUNE	JULY	AUG.	SEPT.	OCT.	NOV.	DEC.
PRETISS	29	1	0	9	1	3	1	0	0	4	3	4	3
QUITMAN	3	0	0	0	0	2	0	0	1	0	0	0	0
RANKIN	192	10	10	30	13	21	26	16	14	8	15	14	15
SCOTT	26	1	1	4	1	2	2	3	2	0	2	2	6
SHARKEY	5	2	0	0	0	0	1	1	0	1	0	0	0
SIMPSON	30	3	4	4	3	2	6	2	2	2	1	1	0
SMITH	14	2	1	0	3	2	2	0	0	0	1	2	1
STONE	18	0	0	1	1	2	6	2	1	0	3	2	0
SUNFLOWER	19	3	2	3	1	3	2	0	1	1	1	0	2
TALLAHATCHIE	8	1	0	2	0	1	1	0	0	0	2	0	1
TATE	24	2	2	5	1	2	2	0	2	2	1	4	1
TIPPAH	20	2	7	3	0	2	1	0	2	0	2	1	0
TISHOMINGO	15	1	2	1	0	0	1	2	1	1	2	4	0
TUNICA	14	0	1	0	3	1	2	2	2	0	2	0	1
UNION	34	4	5	4	1	3	1	5	3	2	0	5	1
WALTHALL	18	5	1	0	2	0	5	0	1	1	0	2	1
WARREN	92	13	5	8	7	8	10	3	8	5	8	11	6
WASHINGTON	58	5	4	5	4	6	9	4	4	2	3	9	3
WAYNE	24	3	1	4	0	4	2	0	0	2	1	3	4
WEBSTER	13	0	0	1	0	6	3	0	1	1	1	0	0
WILKINSON	8	1	1	0	3	0	0	0	0	0	1	1	1
WINSTON	17	2	2	1	1	0	0	3	3	0	1	3	1
YALOBUSHA	9	1	0	2	0	2	1	0	0	0	1	2	0
YAZOO	25	3	0	2	0	5	4	2	2	1	4	1	1
UNCLASSIFIED	807	80	49	72	77	105	78	58	73	62	92	33	28

**TABLE 18
BUSINESS BIRTHS BY NAICS SECTOR & SUBSECTOR BY MONTH 2011**

NAICS SECTOR & SUBSECTOR	TOTAL BIRTHS	BIRTHS PER MONTH											
		JAN.	FEB.	MAR.	APR.	MAY	JUNE	JULY	AUG.	SEP.	OCT.	NOV.	DEC.
GRAND TOTAL	5,365	493	657	402	541	674	279	499	473	233	535	407	172
AGRI., FORESTRY, FISHING, HUNTING	98	17	19	7	6	8	6	8	7	0	11	6	3
111 CROP PRODUCTION	37	8	10	1	3	1	1	5	3	0	1	3	1
112 ANIMAL PRODUCTION	7	1	0	0	0	2	0	0	2	0	2	0	0
113 FORESTRY & LOGGING	28	4	3	4	0	4	3	2	2	0	5	0	1
114 FISHING HUNTING TRAPPING	4	1	0	2	1	0	0	0	0	0	0	0	0
115 AGR. & FORESTRY SUPPORT	22	3	6	0	2	1	2	1	0	0	3	3	1
MINING, QUAR. & OIL & GAS EXTRAC.	83	8	8	5	10	10	5	6	12	6	8	4	1
211 OIL & GAS EXTRACTION	9	1	3	0	1	3	0	0	0	1	0	0	0
212 MINING EXCPT OIL GAS	8	2	2	0	1	0	0	1	1	0	1	0	0
213 SUPPORT FOR MINING	66	5	3	5	8	7	5	5	11	5	7	4	1
UTILITIES	10	0	3	0	0	2	1	2	0	1	1	0	0
221 UTILITIES	10	0	3	0	0	2	1	2	0	1	1	0	0
CONSTRUCTION	624	64	64	56	65	80	39	56	53	21	59	49	18
236 CONSTR. OF BUILDINGS	176	29	15	17	17	15	14	13	19	4	15	13	5
237 HEAVY & CIVIL ENG. CONS.	85	6	9	6	6	13	5	10	11	1	9	9	0
238 SPECIALTY TRADE CONTRAC.	363	29	40	33	42	52	20	33	23	16	35	27	13
MANUFACTURING	128	11	18	12	13	18	7	16	15	2	7	7	2
311 FOOD MFG.	19	3	2	1	3	2	2	1	4	0	1	0	0
312 BEVG. & TOBACCO MFG.	1	0	0	1	0	0	0	0	0	0	0	0	0
314 TEXTILE PRODUCT MILLS	3	0	0	0	1	0	0	1	0	1	0	0	0
315 APPAREL MANUFACTURING	1	0	0	0	0	1	0	0	0	0	0	0	0
321 WOOD PRODUCT MFG.	15	1	2	4	0	3	1	1	1	0	1	0	1
322 PAPER MFG.	2	0	0	0	1	0	0	0	0	0	0	1	0
323 PRINTING & SUPPORT	10	0	1	0	0	1	1	3	1	0	1	2	0
324 PETROL & COAL PRODUCTION	1	0	0	0	1	0	0	0	0	0	0	0	0
325 CHEMICAL MFG.	12	0	0	2	0	3	2	3	0	0	1	1	0
326 PLASTICS & RUBBER	4	1	0	0	1	0	0	2	0	0	0	0	0

TABLE 18
BUSINESS BIRTHS BY NAICS SECTOR & SUBSECTOR BY MONTH 2011

NAICS SECTOR & SUBSECTOR	TOTAL BIRTHS	BIRTHS PER MONTH											
		JAN.	FEB.	MAR.	APR.	MAY	JUNE	JULY	AUG.	SEP.	OCT.	NOV.	DEC.
327 NONMETAL MINERAL MFG.	3	0	0	0	1	0	0	2	0	0	0	0	0
331 PRIMARY METAL MFG.	1	0	0	0	1	0	0	0	0	0	0	0	0
332 FAB. METAL PRODUCTS MFG.	8	0	3	0	0	1	0	0	1	0	1	2	0
333 MACHINERY MFG.	4	1	1	0	0	0	0	1	0	0	1	0	0
334 COMPUTER & ELEC. PRD	3	0	1	0	0	1	0	0	1	0	0	0	0
335 ELEC. EQUIP. & APPL. & COMPN.	1	0	0	0	0	1	0	0	0	0	0	0	0
336 TRANSP. EQUIPMENT MFG.	14	1	3	1	1	3	0	0	4	0	0	0	1
337 FURNITURE & REL. PROD. MFG.	20	3	5	3	2	1	1	2	2	1	0	0	0
339 MISC. MANUFACTURING	6	1	0	0	1	1	0	0	1	0	1	1	0
WHOLESALE TRADE	357	36	40	27	22	57	22	40	32	16	14	38	13
423 DURABLE GDS. WHOLESALE	71	8	3	3	2	14	3	17	5	2	4	7	3
424 NONDURABLE WHOLESALE	28	2	4	2	5	0	3	3	1	1	2	4	1
425 ELECTR. MKTS. AGTS. & BROKER	258	26	33	22	15	43	16	20	26	13	8	27	9
RETAIL TRADE	595	54	78	35	66	71	23	55	45	25	74	55	14
441 MOTOR VEHICLE & PARTS DLRS.	72	5	9	4	9	9	4	7	6	3	7	7	2
442 FURNITURE STORES	25	5	4	2	5	3	0	1	1	1	2	1	0
443 ELECT. & APPL. STORE	19	3	7	1	2	2	0	3	0	1	0	0	0
444 BLDG. MTL. & GARDEN EQP. SUP.	34	5	3	2	2	2	1	3	5	3	4	3	1
445 FOOD & BEVERAGE STORE	79	6	9	5	6	12	3	7	6	4	12	7	2
446 HEALTH & PRSNL. CARE STORES	34	2	5	4	5	1	1	1	3	2	7	2	1
447 GASOLINE STATIONS	148	6	14	9	15	23	6	15	13	6	23	16	2
448 CLOTHING & ACCESS.	58	3	11	2	10	4	0	4	2	4	7	10	1
451 SPRT. GDS. HOBBY BKS. MUSIC	17	1	1	0	2	2	0	5	0	0	2	3	1
452 GENERAL MERCHANDISE	10	2	2	0	0	3	0	2	1	0	0	0	0
453 MISC. STORE RETAILERS	74	12	10	4	9	9	7	5	4	1	6	5	2
454 NONSTORE RETAILERS	25	4	3	2	1	1	1	2	4	0	4	1	2
TRANSPORTATION & WAREHOUSE	337	29	41	27	42	38	24	30	27	13	33	24	9
481 AIR TRANSPORTATION	1	0	0	0	0	1	0	0	0	0	0	0	0
483 WATER TRANSPORTATION	3	0	0	0	0	1	0	1	1	0	0	0	0

TABLE 18
BUSINESS BIRTHS BY NAICS SECTOR & SUBSECTOR BY MONTH 2011

NAICS SECTOR & SUBSECTOR	TOTAL BIRTHS	BIRTHS PER MONTH											
		JAN.	FEB.	MAR.	APR.	MAY	JUNE	JULY	AUG.	SEP.	OCT.	NOV.	DEC.
484 TRUCK TRANSPORTATION	209	17	23	18	29	21	11	21	14	10	21	16	8
485 TRANSIT & GRND. PSNGR. TRAN.	12	1	1	1	0	2	0	3	2	1	1	0	0
486 PIPELINE TRANSPORT	1	1	0	0	0	0	0	0	0	0	0	0	0
487 SCENIC & SIGHTSEEING TRAN.	2	0	0	1	0	0	0	1	0	0	0	0	0
488 TRANSP. SUPPORT	44	2	7	1	4	4	4	3	4	1	5	8	1
491 POSTAL SERVICE	1	0	0	0	0	0	0	0	0	0	1	0	0
492 COURIERS & MESSENGERS	47	7	7	4	9	7	7	0	3	1	2	0	0
493 WAREHOUSING & STORAGE	17	1	3	2	0	2	2	1	3	0	3	0	0
INFORMATION	59	3	10	8	1	6	3	3	4	8	3	5	5
511 PUBLSHNG. (EXCP. INTERNET)	5	1	1	1	1	0	0	0	0	1	0	0	0
512 MOTION PIC. & SOUND RECRD.	14	0	6	0	0	3	1	0	0	1	2	1	0
515 BROADCASTING	5	1	1	1	0	1	0	0	0	0	0	0	1
517 TELECOMMUNICATIONS	6	1	0	0	0	1	1	0	1	1	0	1	0
518 DATA PRC., HOST. & RLTD. SVCS.	16	0	2	4	0	0	0	1	2	1	1	2	3
519 OTHER INFO SERVICES	13	0	0	2	0	1	1	2	1	4	0	1	1
FINANCE & INSURANCE	208	17	27	18	22	26	10	18	21	10	16	12	11
521 MONETARY AUTHORITIES	1	0	0	0	0	0	0	0	0	0	0	0	1
522 CREDIT INTERMEDIATN. & SRVS.	44	5	4	3	6	5	3	5	3	4	3	3	0
523 SECU., COMMD. & FINAN. INV.	27	2	3	2	3	2	0	3	5	1	1	3	2
524 INSURANCE CARRIERS	105	9	14	9	12	14	6	7	11	4	10	5	4
525 FUNDS, TRUSTS, & OTHER FIN.	31	1	6	4	1	5	1	3	2	1	2	1	4
REAL ESTATE & RENTAL & LEASING	172	8	29	11	27	20	10	11	12	10	18	11	5
531 REAL ESTATE	151	8	25	10	21	18	9	9	12	9	17	8	5
532 RENTAL & LEASING SRVS.	18	0	4	1	4	1	1	2	0	1	1	3	0
533 LESSORS NONFIN. INTANGIBLE	3	0	0	0	2	1	0	0	0	0	0	0	0
PROFESSIONAL, SCI. & TECH. SVCS.	709	61	83	46	73	91	36	57	55	34	85	59	29
541 PROF., SCI. & TECH. SERVICES	709	61	83	46	73	91	36	57	55	34	85	59	29
MGMT. OF COMPANIES & ENTERPR.	45	7	5	4	5	9	1	1	3	3	4	2	1

**TABLE 18
BUSINESS BIRTHS BY NAICS SECTOR & SUBSECTOR BY MONTH 2011**

NAICS SECTOR & SUBSECTOR	TOTAL BIRTHS	BIRTHS PER MONTH											
		JAN.	FEB.	MAR.	APR.	MAY	JUNE	JULY	AUG.	SEP.	OCT.	NOV.	DEC.
551 MGMT. OF COMPANIES	45	7	5	4	5	9	1	1	3	3	4	2	1
ADMINISTRATIVE & WASTE SRV.	475	37	56	44	38	66	28	40	46	22	43	37	18
561 ADMIN. & SUPPORT SRVS.	449	33	53	39	38	62	27	37	45	20	42	35	18
562 WASTE MGMT. & REMED. SRVS.	26	4	3	5	0	4	1	3	1	2	1	2	0
EDUCATIONAL SERVICES	89	4	20	6	4	13	5	7	11	3	8	5	3
611 EDUCATIONAL SERVICES	89	4	20	6	4	13	5	7	11	3	8	5	3
HEALTH CARE & SOCIAL ASSIST.	354	33	31	27	31	47	18	31	35	20	40	23	18
621 AMBULATORY HEALTH CARE SRVS.	225	20	19	15	22	34	9	22	21	10	28	16	9
622 HOSPITALS	4	0	0	0	1	0	1	0	0	1	0	1	0
623 NURSING & RESID. CARE FACIL.	23	3	1	2	1	0	1	0	8	0	4	2	1
624 SOCIAL ASSISTANCE	102	10	11	10	7	13	7	9	6	9	8	4	8
ARTS, ENTERTAINMENT & REC.	75	7	11	3	6	9	4	9	9	6	8	2	1
711 PERF. ARTS, SPECT. SPORTS	26	3	4	2	1	0	2	4	1	4	4	1	0
712 MUSEUMS, PARKS HIST.	3	0	2	0	0	1	0	0	0	0	0	0	0
713 AMUS., GAMBLING, & REC. IND.	46	4	5	1	5	8	2	5	8	2	4	1	1
ACCOMMODATION & FOOD SERVICES	488	30	61	25	56	54	20	67	52	16	59	36	12
721 ACCOMMODATION	40	3	7	0	3	3	2	8	5	1	2	5	1
722 FOOD SRVC. & DRINKING PLACES	448	27	54	25	53	51	18	59	47	15	57	31	11
OTHER SERVICE (EXCPT PUBLIC ADMN.)	431	60	50	37	51	47	17	41	31	16	42	30	9
811 REPAIR & MAINTENANCE	163	22	17	9	17	18	10	18	12	4	21	11	4
812 PERSONAL & LAUNDRY SVCS.	63	7	6	4	8	8	2	9	3	4	5	7	0
813 MEMBERSHIP ASSNS.	20	1	0	3	2	4	1	3	1	0	2	2	1
814 PRIVATE HOUSEHOLDS	185	30	27	21	24	17	4	11	15	8	14	10	4
PUBLIC ADMINISTRATION	5	0	2	2	0	0	0	1	0	0	0	0	0
921 EXEC. LEG. GEN. GOVT. SUP.	3	0	1	2	0	0	0	0	0	0	0	0	0
922 JUSTICE PBL. ORDER & SAFETY	1	0	0	0	0	0	0	1	0	0	0	0	0
924 ADMIN. ENVIRON. PGM.	1	0	1	0	0	0	0	0	0	0	0	0	0
NONCLASSIFIED	23	7	1	2	3	2	0	0	3	1	2	2	0
999 NONCLASSIFIED	23	7	1	2	3	2	0	0	3	1	2	2	0

**TABLE 19
BUSINESS DEATHS BY NAICS SECTOR & SUBSECTOR BY MONTH 2011**

NAICS SECTOR & SUBSECTOR	TOTAL DEATHS	DEATHS PER MONTH											
		JAN.	FEB.	MAR.	APR.	MAY	JUNE	JULY	AUG.	SEP.	OCT.	NOV.	DEC.
GRAND TOTAL	4,684	392	354	532	377	504	482	362	425	305	437	269	245
AGRI., FORESTRY, FISHING, HUNTING	92	8	10	8	13	10	9	7	9	5	4	5	4
111 CROP PRODUCTION	18	1	1	1	2	3	2	2	3	1	0	1	1
112 ANIMAL PRODUCTION	10	2	0	1	2	1	0	2	0	0	0	1	1
113 FORESTRY & LOGGING	37	0	7	2	6	4	5	1	3	3	2	2	2
114 FISHING HUNTING TRAPPING	2	0	0	0	0	0	1	1	0	0	0	0	0
115 AGR. & FORESTRY SUPPORT	25	5	2	4	3	2	1	1	3	1	2	1	0
MINING, QUAR. & OIL & GAS EXTRAC.	38	3	1	5	4	6	5	1	4	3	3	2	1
211 OIL & GAS EXTRACTION	5	0	0	1	1	0	2	0	0	0	0	1	0
213 SUPPORT FOR MINING	33	3	1	4	3	6	3	1	4	3	3	1	1
UTILITIES	5	0	0	2	0	1	1	1	0	0	0	0	0
221 UTILITIES	5	0	0	2	0	1	1	1	0	0	0	0	0
CONSTRUCTION	656	61	57	69	49	65	74	45	45	39	74	45	33
236 CONSTR. OF BUILDINGS	198	20	22	19	20	12	24	16	10	16	19	13	7
237 HEAVY & CIVIL ENG. CONS.	69	9	5	5	5	7	7	5	2	7	4	7	6
238 SPECIALTY TRADE CONTRAC.	389	32	30	45	24	46	43	24	33	16	51	25	20
MANUFACTURING	153	14	19	17	12	14	15	11	13	11	12	12	3
311 FOOD MFG.	8	0	1	1	1	0	0	1	0	2	1	1	0
312 BEVG. & TOBACCO MFG.	1	0	0	0	0	0	0	0	0	0	0	1	0
313 TEXTILE MILLS	2	0	1	0	1	0	0	0	0	0	0	0	0
314 TEXTILE PRODUCT MILLS	4	0	0	0	0	0	0	1	0	2	0	1	0
315 APPAREL MFG.	4	0	1	1	0	0	0	1	0	0	1	0	0
316 LEATHER & ALLIED PRD.	2	0	0	0	0	0	0	0	0	1	1	0	0
321 WOOD PRODUCT MFG.	15	0	2	2	0	1	2	4	2	0	1	1	0
322 PAPER MFG.	3	0	0	1	1	0	1	0	0	0	0	0	0
323 PRINTING & SUPPORT	9	0	0	1	0	0	2	0	0	0	4	2	0
325 CHEMICAL MFG.	7	3	1	0	1	1	0	0	1	0	0	0	0
326 PLASTICS & RUBBER PROD. MFG.	5	0	1	0	0	0	2	0	0	2	0	0	0

**TABLE 19
BUSINESS DEATHS BY NAICS SECTOR & SUBSECTOR BY MONTH 2011**

NAICS SECTOR & SUBSECTOR	TOTAL DEATHS	DEATHS PER MONTH											
		JAN.	FEB.	MAR.	APR.	MAY	JUNE	JULY	AUG.	SEP.	OCT.	NOV.	DEC.
327 NONMETAL MINERAL MFG.	8	3	0	0	0	1	2	0	1	0	0	1	0
332 FAB. METAL PRODUCTS MFG.	18	1	4	0	2	3	0	1	1	2	2	1	1
333 MACHINERY MFG.	2	0	0	1	0	0	1	0	0	0	0	0	0
334 MCOMPUTER & ELEC. PRD.	1	0	0	0	0	1	0	0	0	0	0	0	0
335 ELEC. EQUIP. & APPL. & COMPN.	3	0	0	0	2	0	0	1	0	0	0	0	0
336 TRANSP. EQUIPMENT MFG.	13	3	1	2	0	0	0	0	3	1	1	1	1
337 FURNITURE & REL. PROD. MFG.	31	3	4	3	1	6	4	2	3	1	1	3	0
339 MISC. MANUFACTURING	17	1	3	5	3	1	1	0	2	0	0	0	1
WHOLESALE TRADE	260	26	18	31	23	34	22	16	26	22	27	9	6
423 DURABLE GDS. WHOLESALE	72	8	5	12	6	9	7	6	6	3	6	2	2
424 NONDURABLE WHOLESALE	45	5	2	5	1	5	3	3	6	6	6	2	1
425 ELECTR. MKTS. AGTS. & BROKER	143	13	11	14	16	20	12	7	14	13	15	5	3
RETAIL TRADE	650	52	54	73	45	56	64	52	60	45	68	42	39
441 MOTOR VEHICLE & PARTS DLRS.	73	6	9	6	2	9	9	7	5	6	9	3	2
442 FURNITURE STORES	44	1	5	6	1	3	1	5	7	6	6	2	1
443 ELECT. & APPL. STORES	28	2	2	3	4	4	0	2	7	1	2	1	0
444 BLDG. MTL. & GARDEN EQP. SUP.	45	5	6	7	4	4	6	3	1	2	1	4	2
445 FOOD & BEVERAGE STORES	76	10	4	8	7	4	11	2	9	4	4	7	6
446 HEALTH & PRSNL. CARE STORES	32	0	3	4	1	5	2	3	3	3	6	1	1
447 GASOLINE STATIONS	140	11	9	14	9	8	16	10	9	10	19	13	12
448 CLOTHING & ACCESS.	63	7	6	4	6	4	7	6	6	6	4	5	2
451 SPRT. GDS. HOBBY BKS. MUSIC	33	4	2	3	1	2	5	1	1	3	5	3	3
452 GENERAL MERCHANDISE	8	0	1	2	1	0	0	1	2	0	1	0	0
453 MISC. STORE RETAILERS	97	6	7	13	9	13	5	10	9	2	11	3	9
454 NONSTORE RETAILERS	11	0	0	3	0	0	2	2	1	2	0	0	1
TRANSPORTATION & WAREHOUSE	274	17	23	33	19	25	29	19	19	23	32	19	16
481 AIR TRANSPORTATION	2	0	1	0	0	1	0	0	0	0	0	0	0
482 RAIL TRANSPORTATION	1	0	0	0	0	0	1	0	0	0	0	0	0
484 TRUCK TRANSPORTATION	188	12	15	21	15	20	21	14	13	15	21	10	11

**TABLE 19
BUSINESS DEATHS BY NAICS SECTOR & SUBSECTOR BY MONTH 2011**

NAICS SECTOR & SUBSECTOR	TOTAL DEATHS	DEATHS PER MONTH											
		JAN.	FEB.	MAR.	APR.	MAY	JUNE	JULY	AUG.	SEP.	OCT.	NOV.	DEC.
485 TRANSIT & GRND. PSNGR. TRAN.	8	1	1	1	0	0	0	3	1	0	0	1	0
486 PIPELINE TRANSPORT	2	1	0	0	0	0	0	0	0	0	1	0	0
487 SCENIC & SIGHTSEEING TRAN.	2	0	0	0	0	0	0	0	0	1	0	0	1
488 TRANSP. SUPPORT	30	0	3	6	2	2	3	2	2	2	3	3	2
491 POSTAL SERVICE	1	0	0	0	0	1	0	0	0	0	0	0	0
492 COURIERS & MESSENGERS	25	1	2	5	1	0	0	0	1	3	5	5	2
493 WAREHOUSING & STORAGE	15	2	1	0	1	1	4	0	2	2	2	0	0
INFORMATION	42	2	3	4	4	5	4	2	4	3	5	0	6
511 PUBLSHNG. (EXCP. INTERNET)	11	1	2	2	2	0	2	0	0	0	1	0	1
512 MOTION PIC. & SOUND RECRD.	8	0	1	0	1	1	0	1	0	2	1	0	1
515 BROADCASTING	2	0	0	0	0	0	0	0	0	0	1	0	1
517 TELECOMMUNICATIONS	8	1	0	0	0	2	0	1	2	0	1	0	1
518 DATA PRC., HOST. & RLTD. SVCS.	8	0	0	0	0	2	1	0	1	1	1	0	2
519 OTHER INFO SERVICES	5	0	0	2	1	0	1	0	1	0	0	0	0
FINANCE & INSURANCE	198	18	12	23	22	23	19	16	19	12	15	9	10
522 CREDIT INTERMEDIATN. & SRVS.	63	7	6	7	6	7	2	6	6	4	7	2	3
523 SEC., COMMD. & FINAN. INV.	22	3	1	3	4	2	2	1	2	1	0	2	1
524 INSURANCE CARRIERS	94	5	5	11	9	9	11	9	11	6	8	5	5
525 FUNDS, TRUSTS, & OTHER FIN.	19	3	0	2	3	5	4	0	0	1	0	0	1
REAL ESTATE & RENTAL & LEASING	155	14	5	24	11	14	9	17	17	11	15	7	11
531 REAL ESTATE	125	11	5	22	10	12	9	10	11	9	13	5	8
532 RENTAL & LEASING SRVS.	27	3	0	2	1	1	0	7	6	2	1	2	2
533 LESSORS NONFIN. INTANGIBLE	3	0	0	0	0	1	0	0	0	0	1	0	1
PROFESSIONAL, SCI. & TECH. SVCS.	468	40	27	50	38	54	61	39	42	25	48	29	15
541 PROF., SCI. & TECH. SERVICES	468	40	27	50	38	54	61	39	42	25	48	29	15
MGMT. OF COMPANIES & ENTERPR.	17	0	2	3	3	0	1	1	4	1	1	0	1
551 MGMT. OF COMPS. & ENTERPR.	17	0	2	3	3	0	1	1	4	1	1	0	1
ADMIN. & WASTE MGT. & REMED. SRVS.	354	34	24	41	28	45	36	30	27	19	35	16	19
561 ADMIN. & SUPPORT SRVS.	322	30	20	36	26	41	33	27	26	15	35	15	18

**TABLE 19
BUSINESS DEATHS BY NAICS SECTOR & SUBSECTOR BY MONTH 2011**

NAICS SECTOR & SUBSECTOR	TOTAL DEATHS	DEATHS PER MONTH											
		JAN.	FEB.	MAR.	APR.	MAY	JUNE	JULY	AUG.	SEP.	OCT.	NOV.	DEC.
562 WASTE MGMT. & REMED. SRVS.	32	4	4	5	2	4	3	3	1	4	0	1	1
EDUCATIONAL SERVICES	55	8	6	7	6	2	4	5	3	5	2	5	2
611 EDUCATIONAL SERVICES	55	8	6	7	6	2	4	5	3	5	2	5	2
HEALTH CARE & SOCIAL ASSIST.	319	29	24	36	22	33	38	25	32	19	20	20	21
621 AMBULATORY HEALTH CARE SRVS.	185	17	11	18	15	25	19	19	19	13	12	9	8
622 HOSPITALS	4	1	0	1	0	0	0	1	0	0	1	0	0
623 NURSING & RESID. CARE FACIL.	20	1	3	2	0	1	2	1	5	0	2	3	0
624 SOCIAL ASSISTANCE	110	10	10	15	7	7	17	4	8	6	5	8	13
ARTS, ENTERTAINMENT & REC.	44	2	3	9	2	5	5	2	4	3	3	5	1
711 PERF. ARTS, SPECT. SPORTS	6	0	1	2	1	1	0	0	0	0	1	0	0
713 AMUS., GAMBLING, & REC. IND.	38	2	2	7	1	4	5	2	4	3	2	5	1
ACCOMMODATION & FOOD SERVICES	403	25	22	40	33	50	40	31	52	30	31	23	26
721 ACCOMMODATION	33	2	2	4	3	3	5	1	6	1	0	3	3
722 FOOD SRVC. & DRINKING PLACES	370	23	20	36	30	47	35	30	46	29	31	20	23
OTHER SERVICE (EXCPT PUBLIC ADMN.)	473	37	36	56	40	61	44	41	43	27	40	20	28
811 REPAIR & MAINTENANCE	123	9	16	10	10	13	12	15	9	7	5	7	10
812 PERSONAL & LAUNDRY SVCS.	81	6	9	11	5	7	4	7	8	10	6	2	6
813 MEMBERSHIP ASSNS.	25	3	2	2	4	4	3	1	1	0	3	1	1
814 PRIVATE HOUSEHOLDS	244	19	9	33	21	37	25	18	25	10	26	10	11
PUBLIC ADMINISTRATION	2	0	0	1	0	0	0	1	0	0	0	0	0
922 JUSTICE PBL. ORDER & SAFETY	1	0	0	1	0	0	0	0	0	0	0	0	0
925 COMM. & HOUSING ADMIN.	1	0	0	0	0	0	0	1	0	0	0	0	0
NONCLASSIFIED	26	2	8	0	3	1	2	0	2	2	2	1	3
999 NONCLASSIFIED	26	2	8	0	3	1	2	0	2	2	2	1	3

NAICS CODES AND TITLES

Agriculture, Forestry, Fishing & Hunting

- 111 Crop Production
- 112 Animal Production
- 113 Forestry & Logging
- 114 Fishing, Hunting & Trapping
- 115 Support Activities for Agric. & Forestry

Mining, Quarrying, & Oil & Gas Extraction

- 211 Oil & Gas Extraction
- 212 Mining (except Oil & Gas)
- 213 Support Activities for Mining

Utilities

- 221 Utilities

Construction

- 236 Construction of Buildings
- 237 Heavy & Civil Engineering Construction
- 238 Specialty Trade Contractors

Manufacturing

- 311 Food Mfg.
- 312 Beverage & Tobacco Product Mfg.
- 313 Textile Mills
- 314 Textile Product Mills
- 315 Apparel Mfg.
- 316 Leather & Allied Product Mfg.
- 321 Wood Product Mfg.
- 322 Paper Mfg.
- 323 Printing & Related Support Activities
- 324 Petroleum & Coal Products Mfg.
- 325 Chemical Mfg.
- 326 Plastics & Rubber Products Mfg.
- 327 Nonmetallic Mineral Product Mfg.
- 331 Primary Metal Mfg.
- 332 Fabricated Metal Product Mfg.
- 333 Machinery Mfg.

- 334 Computer & Electronic Product Mfg.
- 335 Electrical Equipment, Appliance, & Component Mfg.
- 336 Transportation Equipment Mfg.
- 337 Furniture & Related Product Mfg.
- 339 Miscellaneous Mfg.

Wholesale Trade

- 423 Merchant Wholesalers, Durable Goods
- 424 Merchant Wholesalers, Nondurable Goods
- 425 Wholesale Electronic Markets & Agents & Brokers

Retail Trade

- 441 Motor Vehicle & Parts Dealers
- 442 Furniture & Home Furnishings Stores
- 443 Electronics & Appliance Stores
- 444 Building Material & Garden Equipment & Supplies Dealers
- 445 Food & Beverage Stores
- 446 Health & Personal Care Stores
- 447 Gasoline Stations
- 448 Clothing & Clothing Accessories Stores
- 451 Sporting Goods, Hobby, Book, & Music Stores
- 452 General Merchandise Stores
- 453 Miscellaneous Store Retailers
- 454 Nonstore Retailers

Transportation & Warehousing

- 481 Air Transportation
- 482 Rail Transportation
- 483 Water Transportation
- 484 Truck Transportation
- 485 Transit & Ground Passenger Transportation
- 486 Pipeline Transportation
- 487 Scenic & Sightseeing Transportation
- 488 Support Activities for Transportation
- 491 Postal Service
- 492 Couriers & Messengers
- 493 Warehousing & Storage

NAICS CODES AND TITLES

Information

- 511 Publishing Industries (except Internet)
- 512 Motion Picture & Sound Recording Industries
- 515 Broadcasting (except Internet)
- 517 Telecommunications
- 518 Data Processing, Hosting & Related Services
- 519 Other Information Services

Finance & Insurance

- 521 Monetary Authorities-Central Bank
- 522 Credit Intermediation & Related Activities
- 523 Securities, Commodity Contracts, & Other Financial Investments & Related Activities
- 524 Insurance Carriers & Related Activities
- 525 Funds, Trusts, & Other Financial Vehicles

Real Estate & Rental & Leasing

- 531 Real Estate
- 532 Rental & Leasing Services
- 533 Lessors of Nonfinancial Intangible Assets (except Copyrighted Works)

Professional, Scientific, & Technical Services

- 541 Professional, Scientific, & Technical Services

Management of Companies & Enterprises

- 551 Management of Companies & Enterprises

Administrative & Support & Waste Management & Remediation Services

- 561 Administrative & Support Services
- 562 Waste Management & Remediation Services

Educational Services

- 611 Educational Services

Health Care & Social Assistance

- 621 Ambulatory Health Care Services
- 622 Hospitals
- 623 Nursing & Residential Care Facilities
- 624 Social Assistance

Arts, Entertainment, & Recreation

- 711 Performing Arts, Spectator Sports, & Related Industries
- 712 Museums, Historical Sites, & Similar Institutions
- 713 Amusement, Gambling, & Recreation Industries

Accommodation & Food Services

- 721 Accommodation
- 722 Food Services & Drinking Places

Other Services (except Public Admin.)

- 811 Repair & Maintenance
- 812 Personal & Laundry Services
- 813 Religious, Grantmaking, Civic, Professional, & Similar Organizations
- 814 Private Households

Public Administration

- 921 Executive, Legislative, & Other General Government Support
- 922 Justice, Public Order, & Safety Activities
- 923 Administration of Human Resource Programs
- 924 Administration of Environmental Quality Programs
- 925 Administration of Housing Programs, Urban Planning, & Community Development
- 926 Administration of Economic Programs
- 927 Space Research & Technology
- 928 National Security & International Affairs

DEFINITION OF TERMS

Accession Rate - Ratio of business births to active establishments.

Business Birth - The establishment of a liable employer reporting unit. Includes new firms and reopened accounts.

Business Death - A termination of Liability of a reporting unit - a separation from coverage without a successor.

Change of Ownership - A transfer of ownership of an existing firm by the addition or loss of a partner, incorporation or disincorporation, merger, transfer, or any other type of legal reorganization resulting in the termination of an employer account and the establishment of a successor account. Changes in ownership are not included in business births and business deaths.

Covered Employer - A business enterprise covered under the Mississippi Employment Security Law. In 1977, the law required coverage of all employers in non-exempt industries which employ one or more workers for twenty different weeks in the current or preceding calendar year, those paying wages of \$1,500 or more during a quarter, state-owned hospitals and state-owned institutions of higher learning, and most non-profit institutions. Employers brought under coverage as a result of the amendments to the Mississippi Employment Security Law effective January 1, 1978 were (1) agricultural employers with 10 or more workers in 20 weeks or who paid \$20,000 or more in quarterly wages for agricultural workers; (2) employers who paid \$1,000 or more in a calendar quarter for domestic services; (3) all agencies of the State and Local Government; and (4) non-profit elementary and secondary schools.

Covered Employment - The number of workers for firms registered under the Mississippi Employment Security Law who earned wages during the pay period including the twelfth of the month.

Covered Wages - All pay to covered workers for personal services, including commissions and bonuses and the cash value of all pay in any medium other than cash.

Establishment - A single business enterprise operating in one location; one firm or reporting unit may consist of a number of separate establishments.

Reporting Unit - A business enterprise which submits a quarterly contribution report. In some cases, one employer may have several reporting units.

Separation Rate - Ratio of business deaths to active establishments.



MISSISSIPPI DEPARTMENT *of* EMPLOYMENT SECURITY

Increasing Employment in Mississippi

Labor Market Information Department

1235 Echelon Parkway

P.O. BOX 1699

Jackson, MS 39213

mdes.ms.gov

Equal Opportunity Employer/Program

Auxiliary aids and services available upon request to individuals with disabilities: TTY 800-582-2233